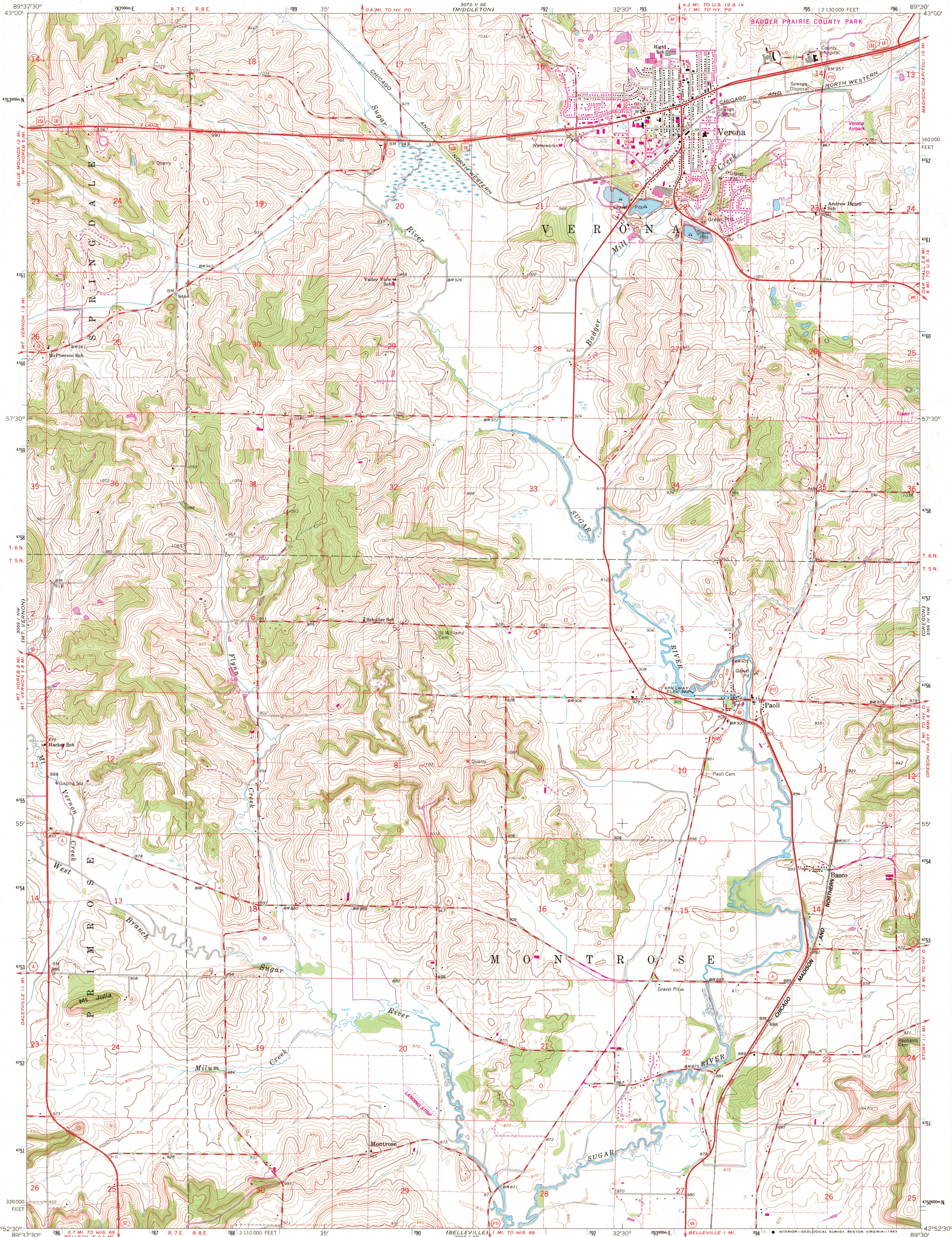


UNITED STATES  
DEPARTMENT OF THE INTERIOR  
GEOLOGICAL SURVEY

VERONA QUADRANGLE  
WISCONSIN-DANE CO.  
7.5 MINUTE SERIES (TOPOGRAPHIC)  
NE/4 NEW GLARUS 15' QUADRANGLE



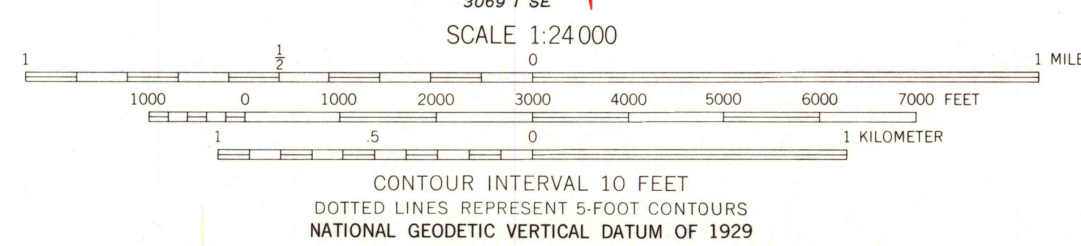
Mapped, edited, and published by the Geological Survey  
in cooperation with State of Wisconsin agencies

Control by USGS and USC&GS  
Topography by photogrammetric methods from aerial  
photographs taken 1961. Field checked 1962

Polyconic projection. 1927 North American datum  
10,000-foot grid based on Wisconsin coordinate system, south zone  
1000-meter Universal Transverse Mercator grid ticks,  
zone 16, shown in blue.

To place on the predicted North American Datum 1983  
move the projection lines 4 meters north and  
10 meters east as shown by dashed corner ticks

Revisions shown in purple compiled from aerial photographs taken 1980  
and other sources. This information not field checked. Map edited 1982



THIS MAP COMPLIES WITH NATIONAL MAP ACCURACY STANDARDS  
FOR SALE BY U. S. GEOLOGICAL SURVEY, RESTON, VIRGINIA 22092  
AND WISCONSIN GEOLOGICAL AND NATURAL HISTORY SURVEY, MADISON, WISCONSIN 53706  
A FOLDER DESCRIBING TOPOGRAPHIC MAPS AND SYMBOLS IS AVAILABLE ON REQUEST

ROAD CLASSIFICATION  
Heavy-duty ——— Light-duty ———  
Medium-duty ——— Unimproved dirt ———  
U.S. Route ——— State Route ———



VERONA, WIS.  
NE/4 NEW GLARUS 15' QUADRANGLE  
N4252.5—W8930/7.5

1962  
PHOTOREVISED 1982  
DMA 3069 I NE—SERIES V861

RETURN TO:  
USGS AND HISTORICAL MAP ARCHIVES

AUG 2 1983