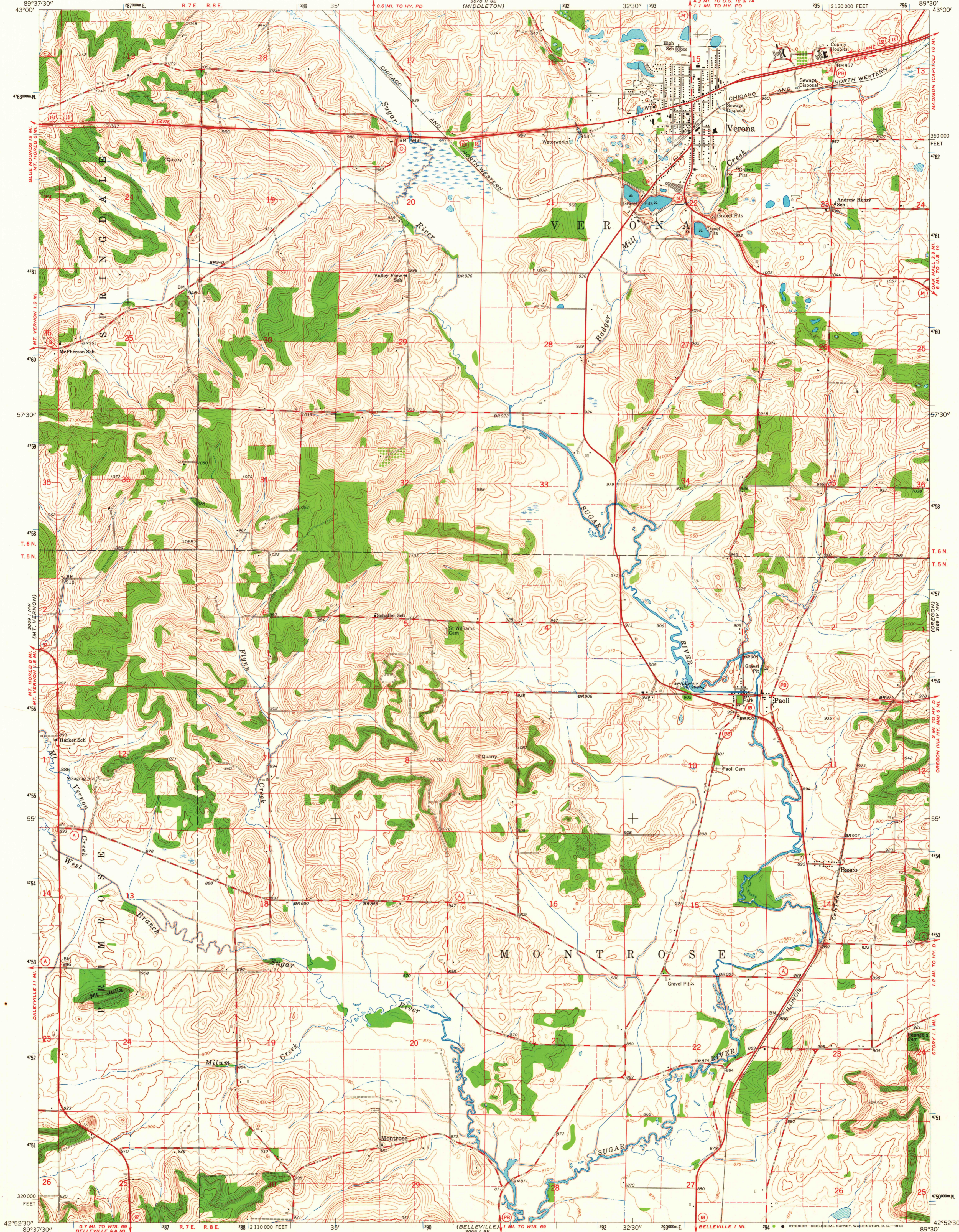
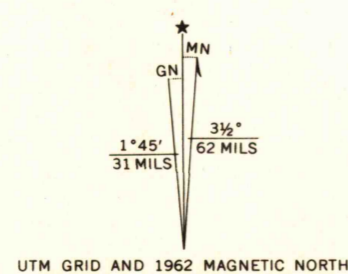


UNITED STATES  
DEPARTMENT OF THE INTERIOR  
GEOLOGICAL SURVEY

VERONA QUADRANGLE  
WISCONSIN-DANE CO.  
7.5 MINUTE SERIES (TOPOGRAPHIC)  
NE/4 NEW GLARUS 15' QUADRANGLE



Mapped, edited, and published by the Geological Survey  
in cooperation with State of Wisconsin agencies  
Control by USGS and USC&GS  
Topography by photogrammetric methods from aerial  
photographs taken 1961. Field checked 1962  
Polyconic projection. 1927 North American datum  
10,000-foot grid based on Wisconsin coordinate system, south zone  
1000-meter Universal Transverse Mercator grid ticks,  
zone 16, shown in blue  
Fine red dashed lines indicate selected fence and field lines where  
generally visible on aerial photographs. This information is unchecked



SCALE 1:24,000  
1 0000 0 1000 2000 3000 4000 5000 6000 7000 FEET  
1 KILOMETER  
CONTOUR INTERVAL 10 FEET  
DOTTED LINES REPRESENT 5-FOOT CONTOURS  
DATUM IS MEAN SEA LEVEL



ROAD CLASSIFICATION  
Heavy-duty ——— Light-duty ———  
Medium-duty ——— Unimproved dirt ———  
U.S. Route ——— State Route ———

VERONA, WIS.  
NE/4 NEW GLARUS 15' QUADRANGLE  
N4252.5-W8930/7.5

1962

AMS 3069 1 NE-SERIES Y861

THIS MAP COMPLIES WITH NATIONAL MAP ACCURACY STANDARDS  
FOR SALE BY U. S. GEOLOGICAL SURVEY, WASHINGTON 25, D. C.  
AND BY THE WISCONSIN GEOLOGICAL AND NATURAL HISTORY SURVEY, MADISON 6, WISCONSIN  
A FOLDER DESCRIBING TOPOGRAPHIC MAPS AND SYMBOLS IS AVAILABLE ON REQUEST

JUL 23 1964

2530