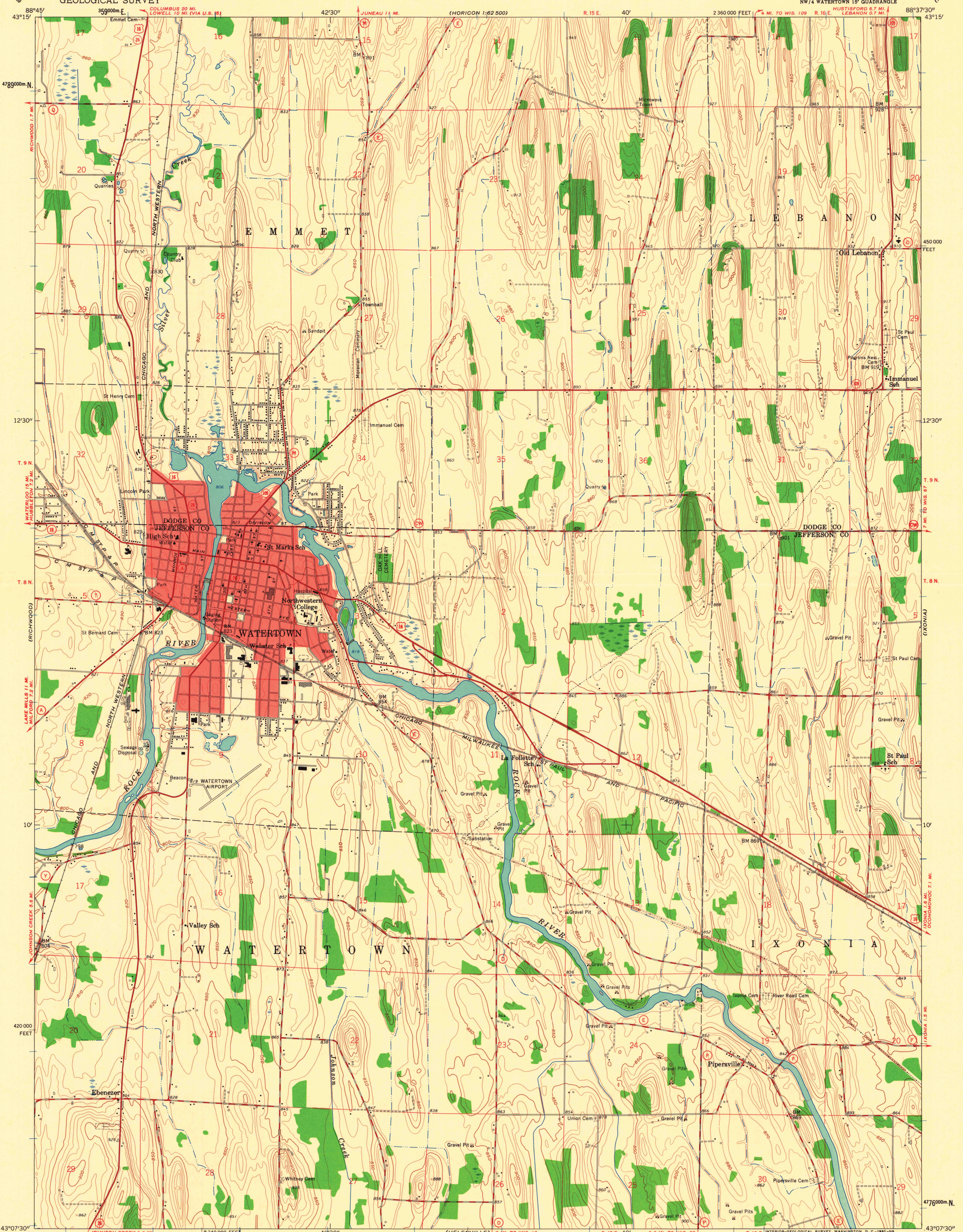
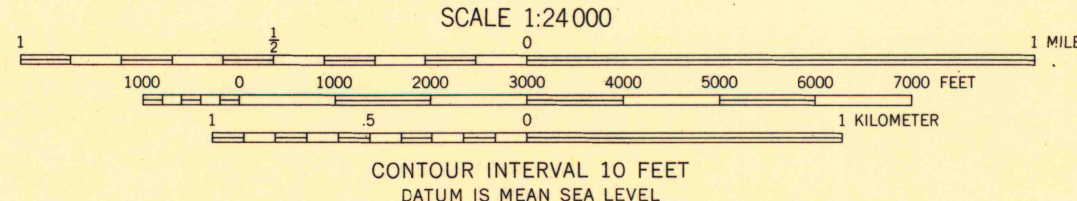


UNITED STATES
DEPARTMENT OF THE INTERIOR
GEOLOGICAL SURVEY

WATERTOWN QUADRANGLE
WISCONSIN
7.5 MINUTE SERIES (TOPOGRAPHIC)
NW 1/4 WATERTOWN 15' QUADRANGLE



Maped, edited, and published by the Geological Survey
Control by USGS and USC&GS
Topography from aerial photographs by photogrammetric methods
Aerial photographs taken 1954-1955. Field check 1959
Polyconic projection. 1927 North American datum
10,000-foot grid based on Wisconsin coordinate system, south zone
1000-meter Universal Transverse Mercator grid ticks,
zone 16, shown in blue
Red tint indicates areas in which only
landmark buildings are shown



MAR 22 2005

ROAD CLASSIFICATION
Heavy-duty ——— Light-duty ———
Medium-duty ——— Unimproved dirt ———
U.S. Route ——— State Route ———

WISCONSIN
QUADRANGLE LOCATION
ARTHUR H. ROBINSON MAP LIBRARY
University of Wisconsin-Madison

WATERTOWN, WIS.
NW 1/4 WATERTOWN 15' QUADRANGLE
N 4307.5-W 8837.5/7.5
1959

1959
copy
1-2