

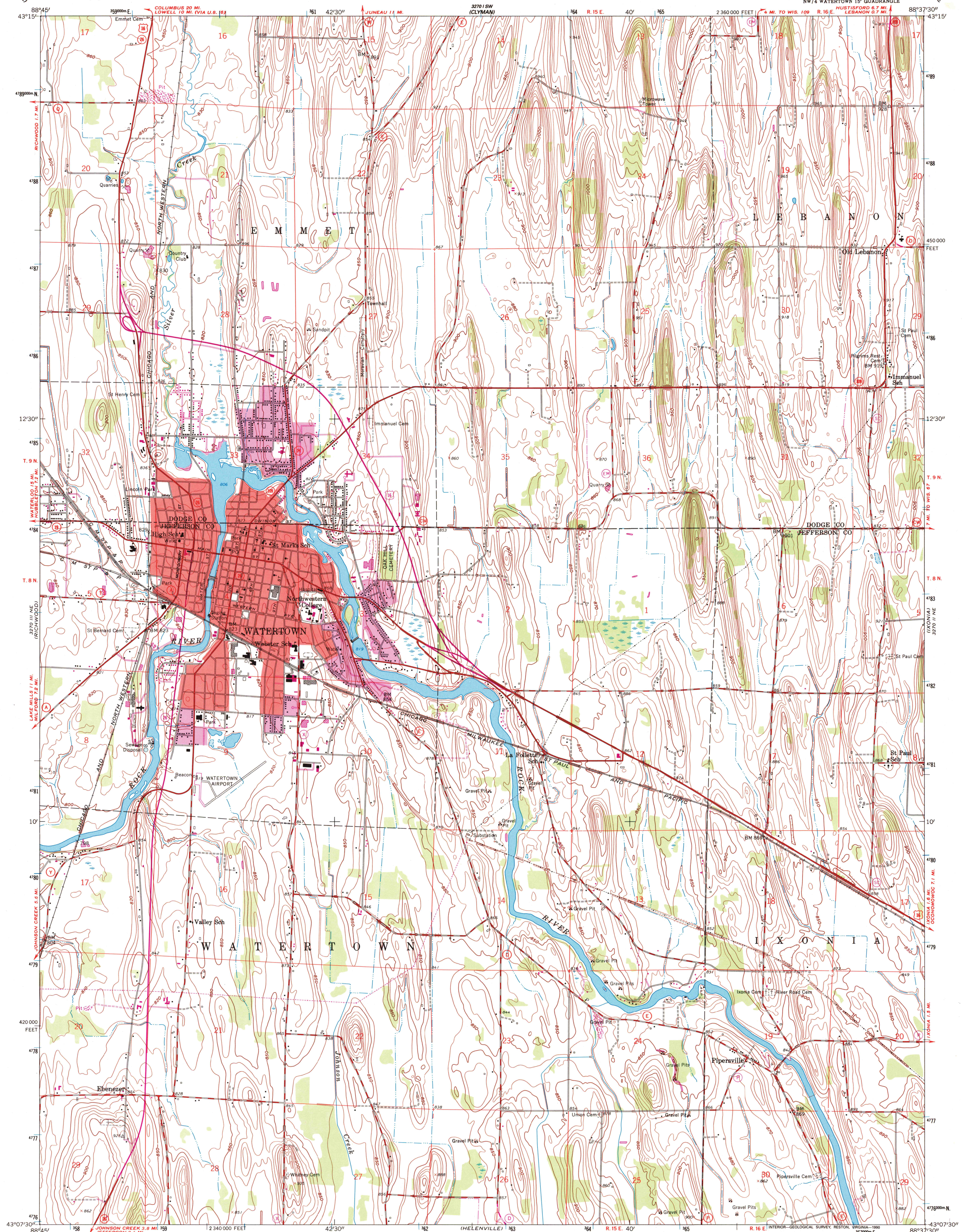


U.S. DEPARTMENT OF THE INTERIOR
U.S. GEOLOGICAL SURVEY

WATERTOWN QUADRANGLE

WISCONSIN
7.5 MINUTE SERIES (TOPOGRAPHIC)
NW 1/4 WATERTOWN 15' QUADRANGLE

3270 SE
(HUSTISFORD)



Mapped, edited, and published by the Geological Survey

Control by USGS and USC&GS

Topography from aerial photographs by photogrammetric methods

Aerial photographs taken 1954-1955. Field check 1959

Polyconic projection. 1927 North American datum

10,000-foot grid based on Wisconsin coordinate system, south zone

1000-meter Universal Transverse Mercator grid ticks, zone 16, shown in blue

Red tint indicates areas in which only landmark buildings are shown

Revisions shown in purple compiled from aerial photographs taken 1971. This information not field checked

Purple tint indicates extension of urban areas

To place on the predicted North American Datum 1983

move the projection lines 4 meters north and

8 meters east as shown by dashed corner ticks

SCALE 1:24,000

CONTOUR INTERVAL 10 FEET

NATIONAL GEODETIC VERTICAL DATUM OF 1929

THIS MAP COMPLIES WITH NATIONAL MAP ACCURACY STANDARDS

FOR SALE BY U.S. GEOLOGICAL SURVEY, DENVER, COLORADO 80225, OR RESTON, VIRGINIA 22092

AND WISCONSIN GEOLOGICAL AND NATURAL HISTORY SURVEY, MADISON, WISCONSIN 53706

A FOLDER DESCRIBING TOPOGRAPHIC MAPS AND SYMBOLS IS AVAILABLE ON REQUEST

ROAD CLASSIFICATION

Primary highway, hard surface

Secondary highway, hard surface

Light-duty road, hard or improved surface

Unimproved road

Interstate Route

U.S. Route

State Route



QUADRANGLE LOCATION

RECEIVED

AUG 3 1 2002

WATERTOWN, WIS.

NW 1/4 WATERTOWN 15' QUADRANGLE

43088-B6-TF-024

USGS/WHI

HISTORICAL MAP ARCHIVES

1959

PHOTOREVISED 1971

DMA 3270 II NW-SERIES 5861

