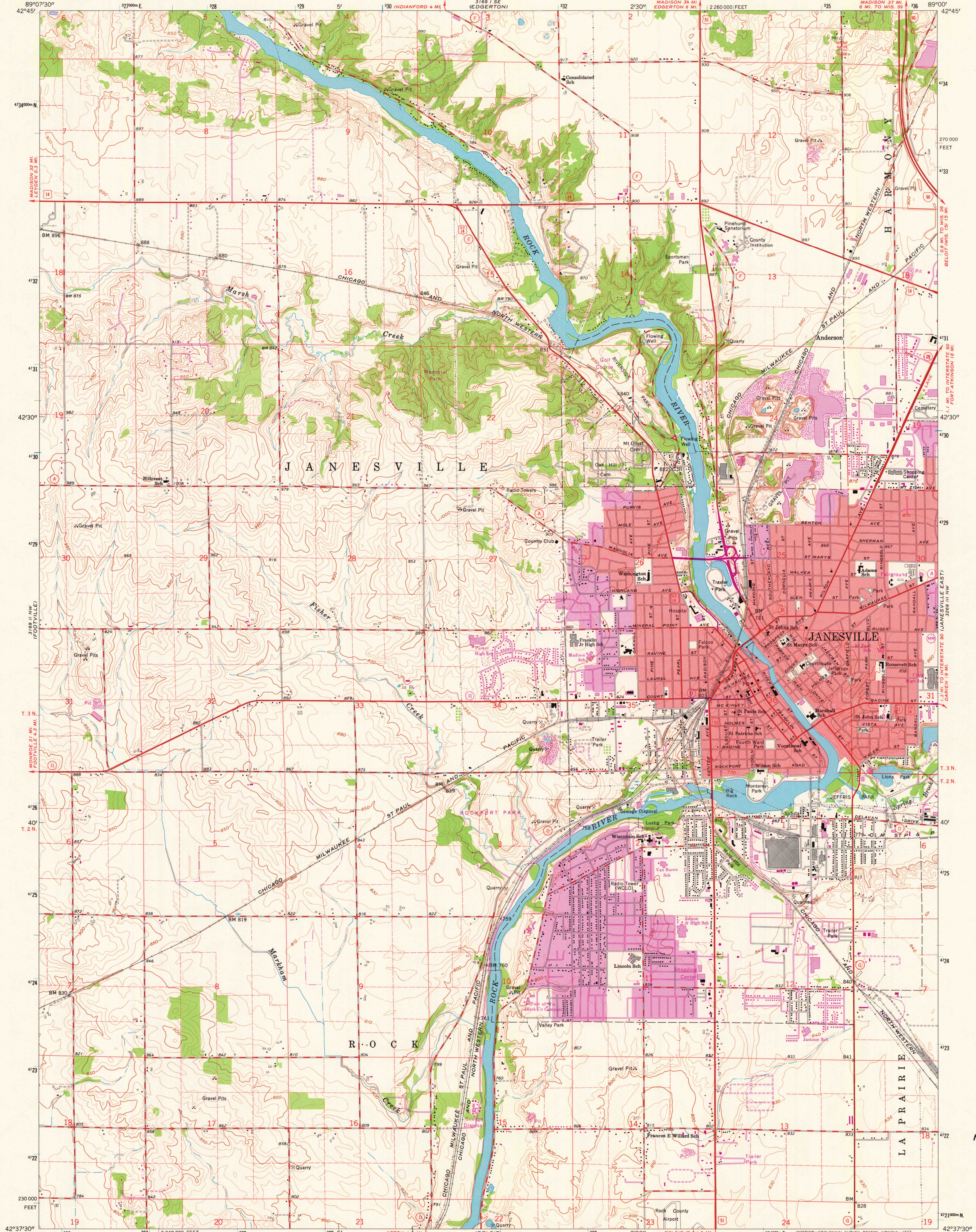
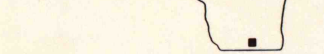
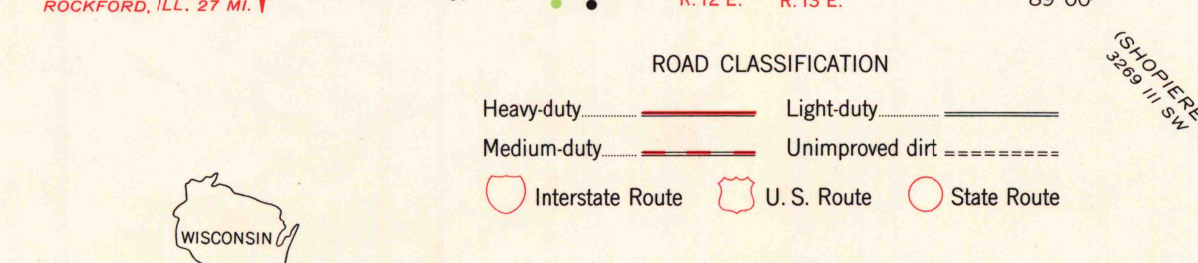
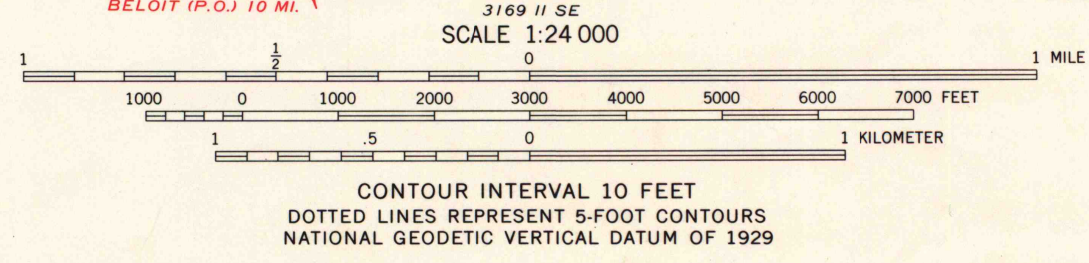
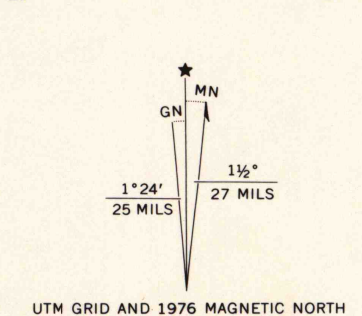


UNITED STATES  
DEPARTMENT OF THE INTERIOR  
GEOLOGICAL SURVEY

JANESVILLE WEST QUADRANGLE  
WISCONSIN-ROCK CO.  
7.5 MINUTE SERIES (TOPOGRAPHIC)  
NE 1/4 JANESVILLE 15' QUADRANGLE  
MADISON 34 MI. EDGERTON 6 MI.  
MADISON 37 MI. 6 MI. TO WIS. 59  
BELOIT 10.5 MI. 10 MI. TO INTERSTATE 90 (JANESVILLE EAST) 3.89 MI. NW



Mapped, edited, and published by the Geological Survey  
in cooperation with State of Wisconsin agencies  
Control by USGS and USC&GS  
Topography by photogrammetric methods from aerial  
photographs taken 1960. Field checked 1961  
Polyconic projection. 1927 North American datum  
10,000-foot grid based on Wisconsin coordinate system, south zone  
1000-meter Universal Transverse Mercator grid ticks,  
zone 16, shown in blue  
Red tint indicates areas in which only landmark buildings are shown  
Fine red dashed lines indicate selected fence and field lines where  
generally visible on aerial photographs. This information is unchecked  
Revisions shown in purple compiled from aerial photographs  
taken 1971 and 1976. This information not field checked  
Purple tint indicates extension of urban areas



JANESVILLE WEST, WIS.  
NE 1/4 JANESVILLE 15' QUADRANGLE  
N 4237.5-W 8900.7.5

1961  
PHOTOREVISED 1971 AND 1976  
AMS 3169 II NE-SERIES V861

MAP AND AIR PHOTO  
LIBRARY  
NOV 18 1977  
University of Wisconsin  
Madison

1976  
copy  
1-1