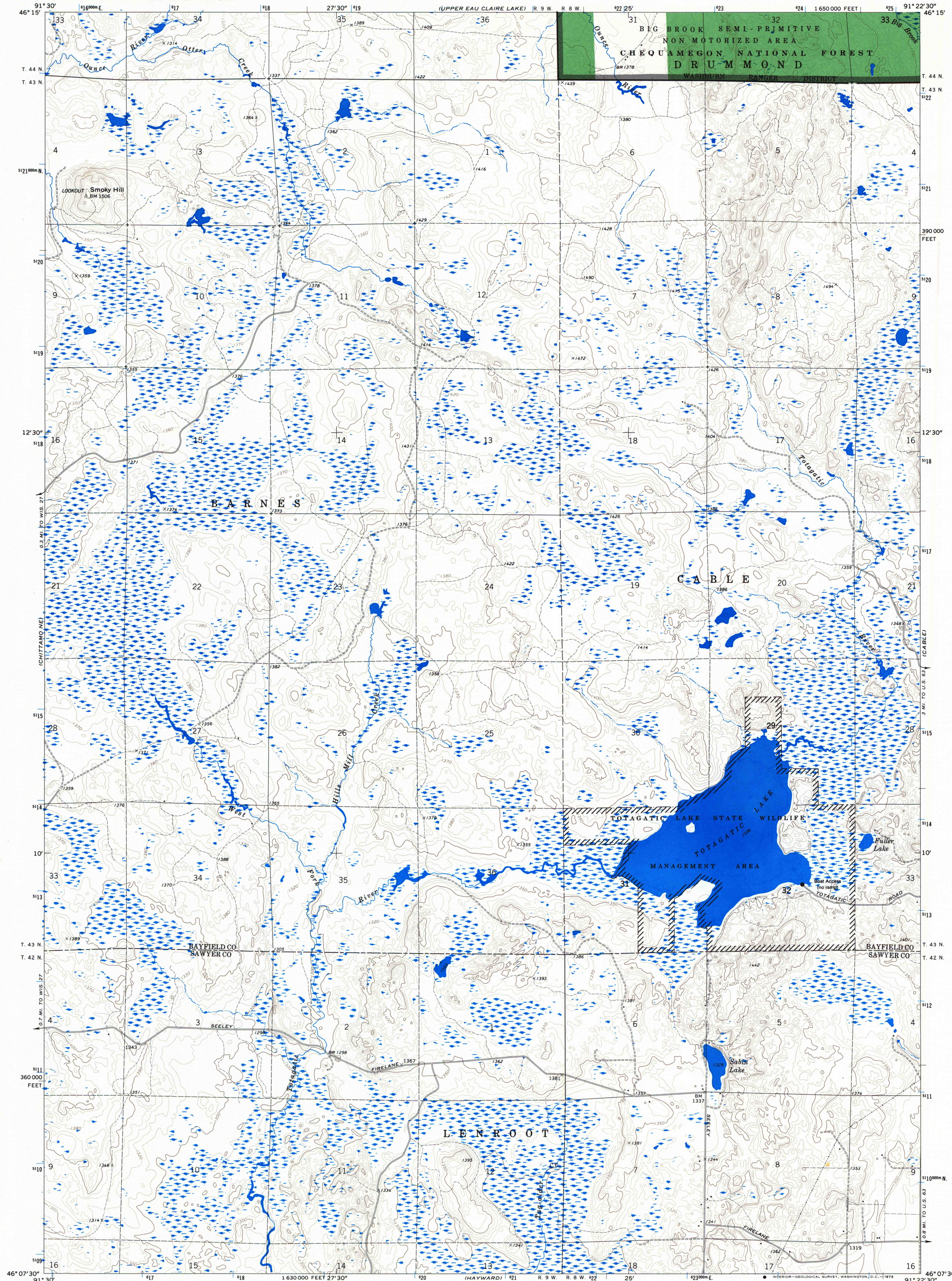


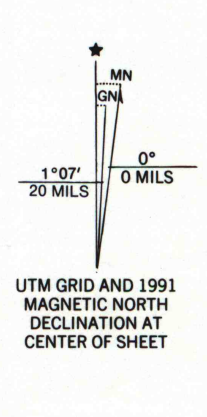
UNITED STATES
DEPARTMENT OF THE INTERIOR
GEOLOGICAL SURVEY
MODIFIED FOR USDA FOREST SERVICE USE

TOTAGATIC LAKE QUADRANGLE
WISCONSIN
7.5 MINUTE SERIES (TOPOGRAPHIC)
NW 1/4 HAYWARD 15' QUADRANGLE

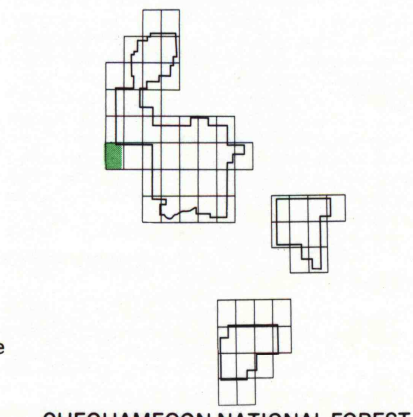
U.S. Depository Copy
Do Not Discard
JAN 05 1993



Base map prepared by the U.S. Geological Survey
in cooperation with the Wisconsin Highway Commission
and Wisconsin Geological and Natural History Survey
Control by USGS and USC&GS
Topography by photogrammetric methods from aerial
photographs taken 1970. Field checked 1971
Depth curves and soundings compiled from charts furnished by
Wisconsin Department of Natural Resources
Polyconic projection. 1927 North American datum
10,000-foot grid based on Wisconsin coordinate system, north zone
1000-meter Universal Transverse Mercator grid ticks,
zone 15, shown in blue
Modification to USGS base map by the Geometrics Service
Center from 1986 and 1988 aerial photography and 1990
correction guides furnished by the Eastern Region.



- CONTOUR INTERVAL 10 FEET
DATUM IS MEAN SEA LEVEL
- | | |
|--|-------------------------|
| — National Forest Boundary | — Primary Highway |
| — National Forest Land as of 1990 | — Secondary Highway |
| — TOWNSHIP AND SECTION LINE CLASSIFICATION | — Improved Road, Paved |
| — Surveyed, Location Reliable | — Improved Road, Gravel |
| — Surveyed, Location Approximate | — Improved Road, Dirt |
| — Unsurveyed, Protraction | — Unimproved Road, Dirt |
| | — Trail |
- | | |
|-----------------------|-------------------------|
| 10 Interstate Highway | 60 Primary Forest Route |
| 21 U.S. Highway | 4037 Forest Road |
| 59 State Highway | 3348 Forest Trail |
| 357 County Road | |



Copies of this map are
available for purchase at
Forest Supervisor's Headquarters
1170 South 4th Avenue
Park Falls, WI 54552

TOTAGATIC LAKE, WIS.
NW 1/4 HAYWARD 15' QUADRANGLE
N4607.5—W9122.5/7.5
1971
DMA 2776 III NW—SERIES V861

U.S. Depository Copy
DO NOT DISCARD

A.H. ROBINSON
MAP LIBRARY
NOV - 6 1995 PD
University of Wisconsin
Madison

6
4122
LS
524
1055
Sh. 20