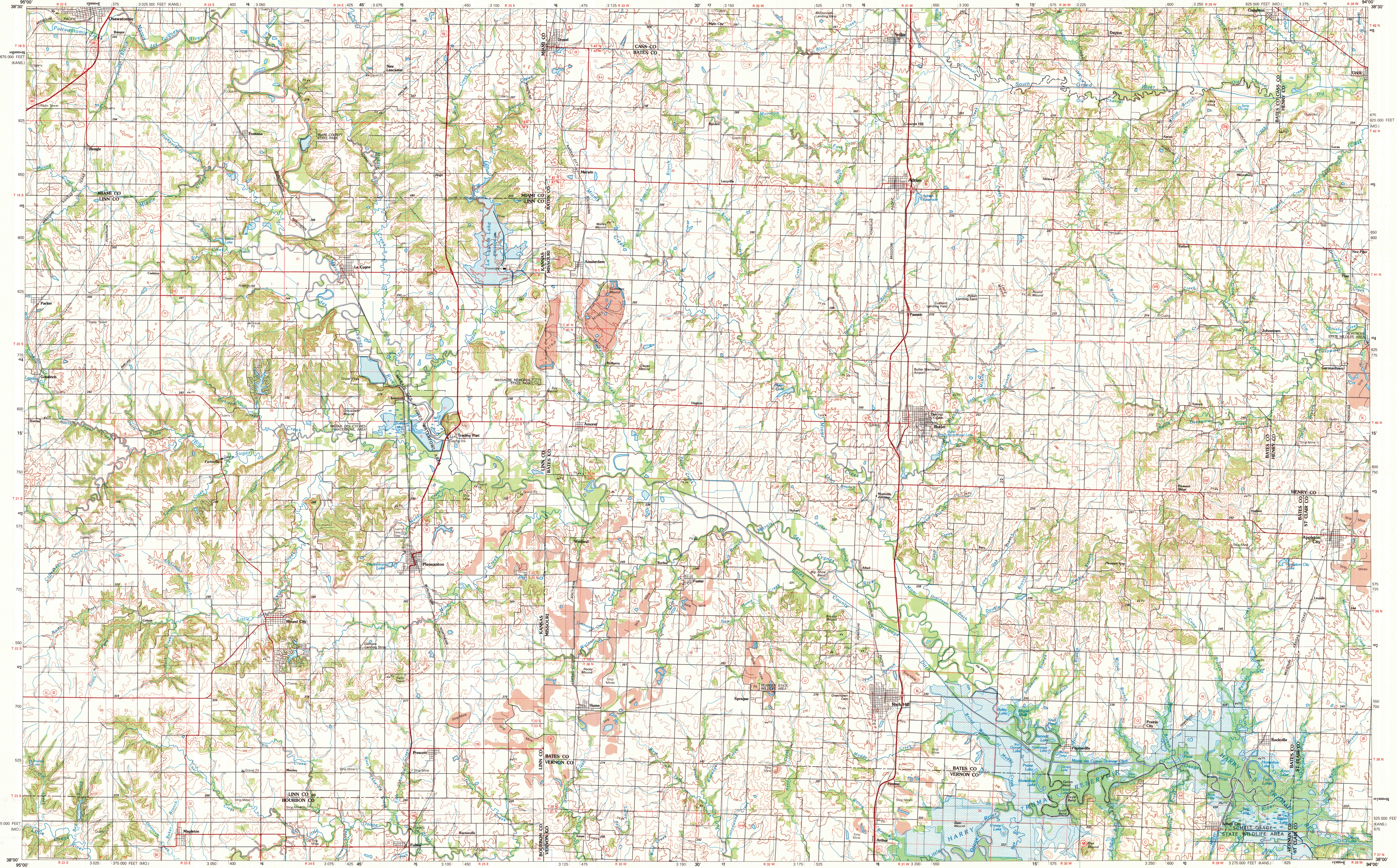
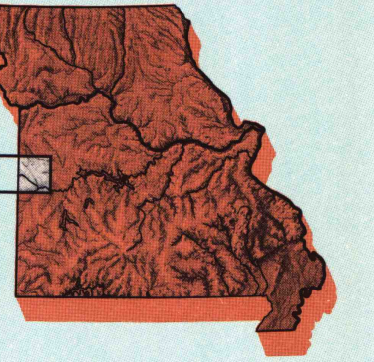


BUTLER, MISSOURI-KANSAS

30 X 60 MINUTE SERIES (TOPOGRAPHIC)

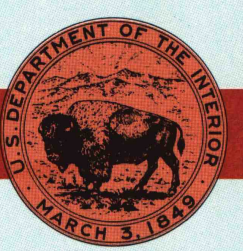


1:100 000-scale metric  
topographic map of  
**Butler**  
MISSOURI-KANSAS



30 X 60 MINUTE QUADRANGLE  
SHOWING

- Contours and elevations in meters
- Highways, roads and other manmade structures
- Water features
- Woodland areas
- Geographic names



GEOLOGICAL SURVEY

1981

Produced by the United States Geological Survey  
Compiled from USGS 1:24 000-scale topographic maps dated 1934-1978. Planimetry revised from aerial photographs taken 1977-78 and other source data. Revised information not field checked. Map dated 1981.  
Projection and 10 000-meter grid, zone 15, Universal Transverse Mercator  
25 000-foot grid ticks based on Missouri coordinate system, west zone, and Kansas coordinate system, south zone 1927 North American Datum  
To place on the predicted North American Datum 1983 move the projection lines 20 meters east  
There may be private inholdings within the boundaries of the National or State reservations shown on this map

CONTOUR INTERVAL 10 METERS  
NATIONAL GEODETIC VERTICAL DATUM OF 1929  
ELEVATIONS SHOWN TO THE NEAREST METER

THIS MAP COMPLIES WITH NATIONAL MAP ACCURACY STANDARDS

CONVERSION TABLE		DECLINATION DIAGRAM	ADJOINING MAPS			
Meters	Feet		1	2	3	
1	3.2808		1	2	3	
2	6.5617		4	5		
3	9.8425		6	7	8	
4	13.1234					
5	16.4042					
6	19.6850					
7	22.9659					
8	26.2467					
9	29.5275					
10	32.8084					
To convert meters to feet multiply by 3.2808		UTM grid convergence (100 and 1000 meters) declination (100) at center of map. Diagram is approximate				
To convert feet to meters multiply by 0.3048						

FOR SALE BY U.S. GEOLOGICAL SURVEY, DENVER, COLORADO 80225  
OR RESTON, VIRGINIA 22092

Topographic Map Symbols

Primary highway, hard surface		Land grant boundary	
Secondary highway, hard surface		U.S. public lands survey: range, township, section	
Light duty road, principal street, hard or improved surface		Range, township, section line: projected	
Other road or street, trail		Power transmission line: pipeline	
Road marker: interstate, U.S., State		Dam, dam with lock	
Railroad: standard gauge, narrow gauge		Cemetery: building	
Bridge: overpass, underpass		Well: water well, spring	
Tunnel: road, railroad		Mine shaft: adit or cave, mine, quarry, gravel pit	
Built up area, locality, elevation		Campground, picnic area, U.S. location monument	
Airport, landing field, landing strip		Ruins, cliff dwelling	
National boundary		Distorted surface: strip mine, level, sand	
State boundary		Contours: index, intermediate, supplementary	
County boundary		Bathymetric contours: index, intermediate	
National or State reservation boundary		Stream, lake: perennial, intermittent	
Land grant boundary		Rapids, large and small; falls, targe and small	
U.S. public lands survey: range, township, section		Area to be submerged: marsh, swamp	
Range, township, section line: projected		Land subject to controlled inundation; woodland	
Power transmission line: pipeline		Springs, mangrove	
Dam, dam with lock		Orchard, vineyard	
Cemetery: building			
Well: water well, spring			
Mine shaft: adit or cave, mine, quarry, gravel pit			
Campground, picnic area, U.S. location monument			
Ruins, cliff dwelling			
Distorted surface: strip mine, level, sand			
Contours: index, intermediate, supplementary			
Bathymetric contours: index, intermediate			
Stream, lake: perennial, intermittent			
Rapids, large and small; falls, targe and small			
Area to be submerged: marsh, swamp			
Land subject to controlled inundation; woodland			
Springs, mangrove			
Orchard, vineyard			

A pamphlet describing topographic maps is available on request

• INTERIOR-GEOLOGICAL SURVEY, RESTON, VIRGINIA-1981

KILOMETERS 1 2 3 4 5 6 7 8 9 10 11 12 13 14 15 16 17 18 19 20  
MILES 0 1 2 3 4 5 6 7 8 9 10 11 12 13 14 15 16 17 18 19 20

SCALE 1:100 000  
1 CENTIMETER ON THE MAP REPRESENTS 1 KILOMETER ON THE GROUND  
CONTOUR INTERVAL 10 METERS

BUTLER, MISSOURI-KANSAS  
N3800-W9400/30 X 60  
MAP AND AIR PHOTO LIBRARY  
University of Wisconsin, Madison  
1981

SET  
8006-918