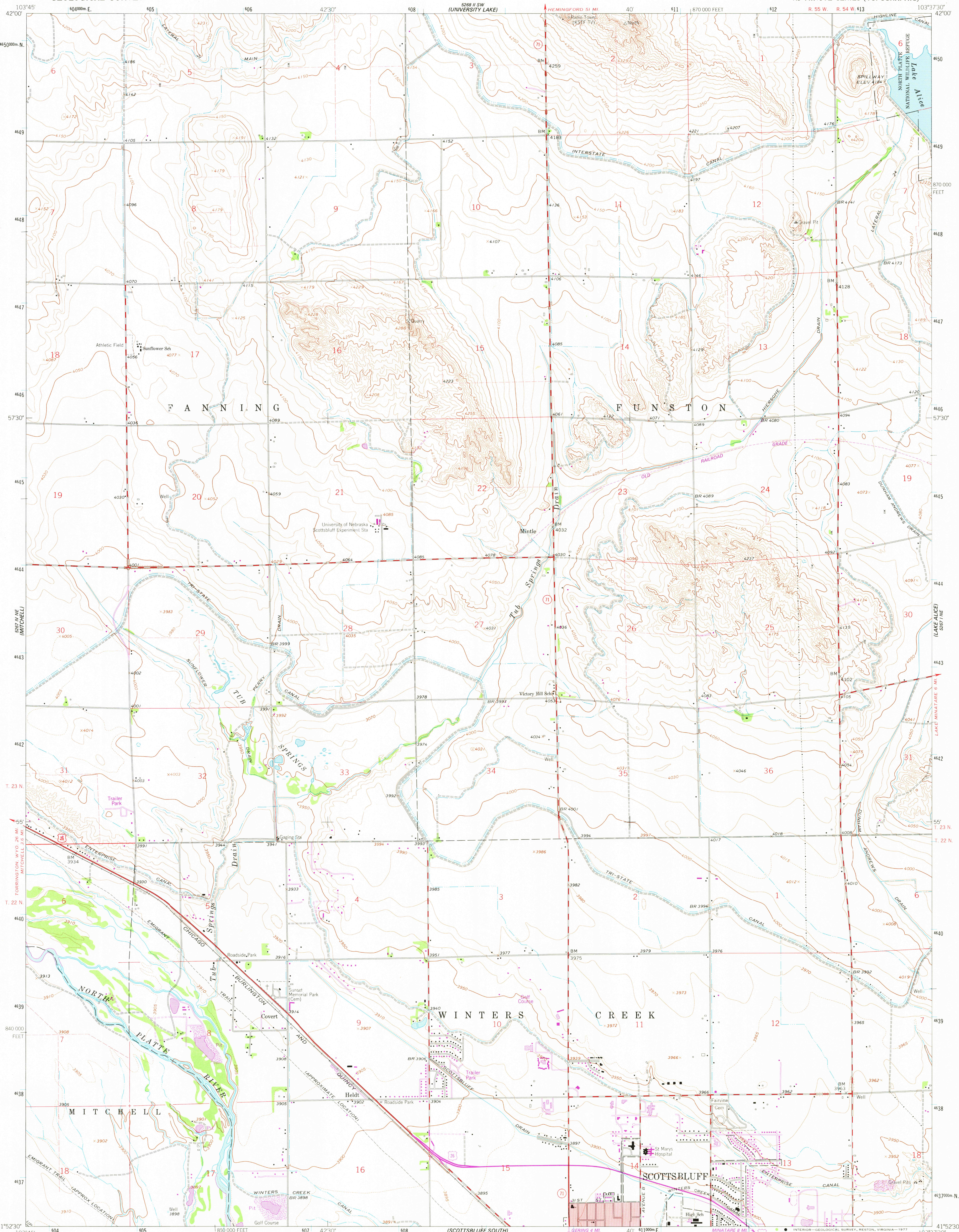


UNITED STATES
DEPARTMENT OF THE INTERIOR
GEOLOGICAL SURVEY

SCOTTSBLUFF NORTH QUADRANGLE
NEBRASKA-SCOTTS BLUFF CO.
7.5 MINUTE SERIES (TOPOGRAPHIC)



Mapped, edited, and published by the Geological Survey
as part of the Department of the Interior program
for the development of the Missouri River Basin

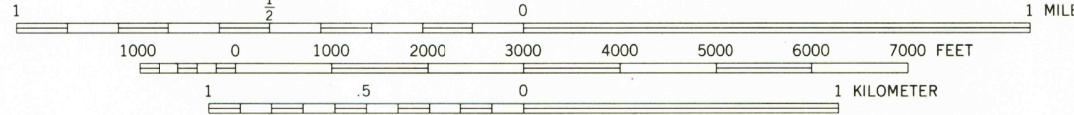
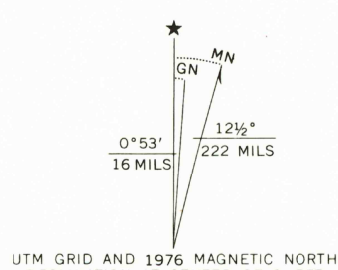
Control by USGS and USC&GS

Topography by photogrammetric methods from aerial
photographs taken 1962. Field checked 1963

Polyconic projection. 1927 North American datum
10,000 foot grid based on Nebraska coordinate system, south zone
1000 meter Universal Transverse Mercator grid ticks,
zone 13, shown in blue

Red tint indicates area in which only landmark buildings are shown

Certain land lines are based on cultural developments and
are not reflected in the original land survey



CONTOUR INTERVAL 10 FEET
DOTTED LINES REPRESENT 5-FOOT CONTOURS
NATIONAL GEODETIC VERTICAL DATUM OF 1929

THIS MAP COMPLIES WITH NATIONAL MAP ACCURACY STANDARDS
FOR SALE BY U. S. GEOLOGICAL SURVEY, DENVER, COLORADO 80225, OR RESTON, VIRGINIA 22092
A FOLDER DESCRIBING TOPOGRAPHIC MAPS AND SYMBOLS IS AVAILABLE ON REQUEST



USGS
Historical File
Topographic Division

SCOTTSBLUFF NORTH, NEBR.
N4152.5-W10337.5/7.5

1963
PHOTOREVISED 1976
AMS 5267-1 NW-SERIES 5/7.5

Revisions shown in purple compiled from aerial photographs
taken 1976. This information not field checked

JUL 11 1978
3100