

(REWARD)

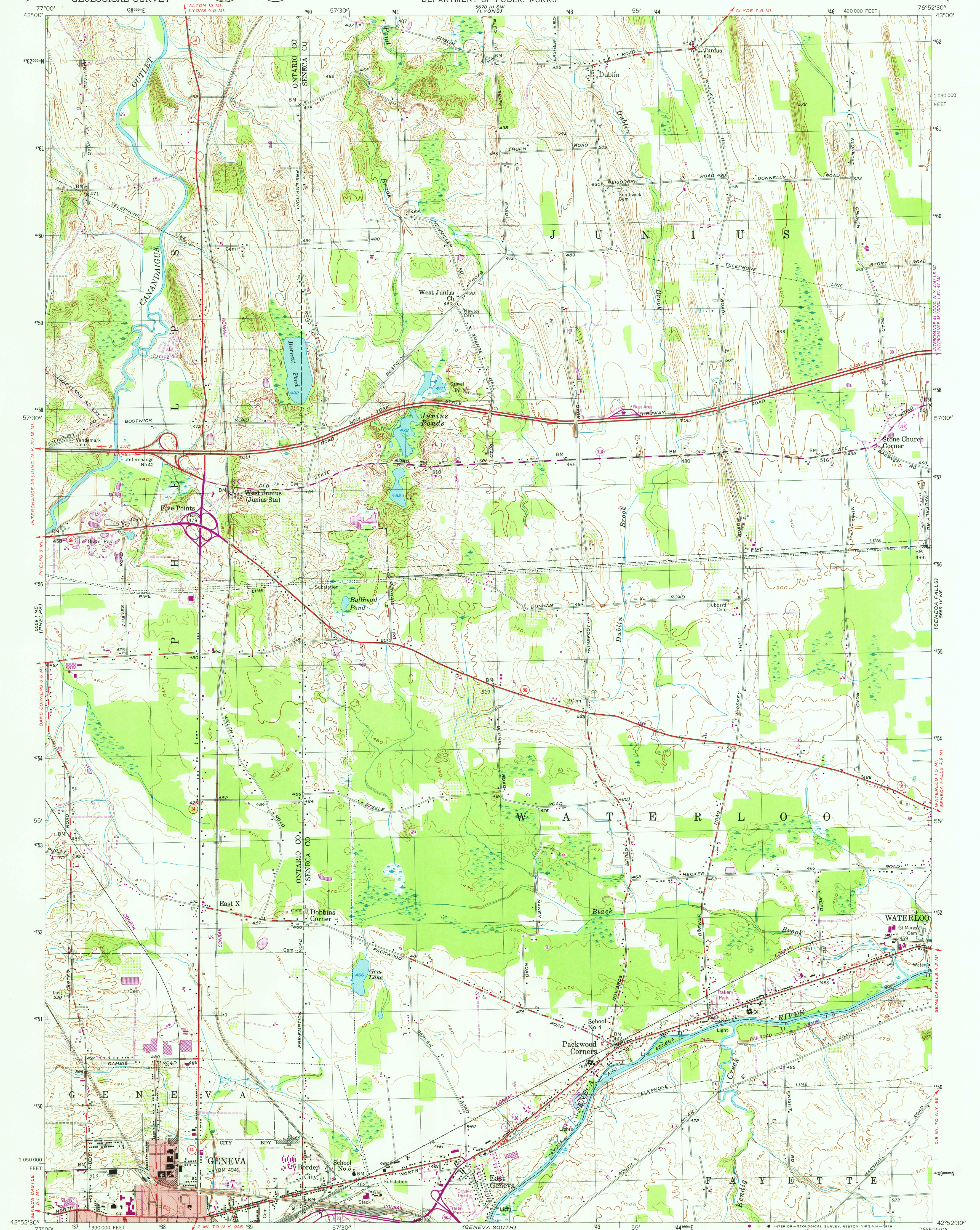
UNITED STATES
DEPARTMENT OF THE INTERIOR
GEOLOGICAL SURVEY



STATE OF NEW YORK
DEPARTMENT OF PUBLIC WORKS

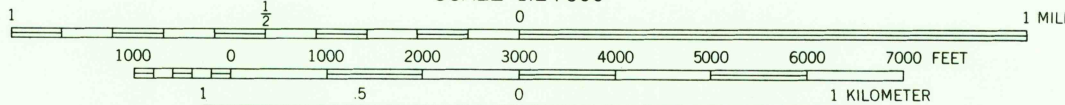
GENEVA NORTH QUADRANGLE
NEW YORK
7.5 MINUTE SERIES (TOPOGRAPHIC)

1569 H.E.
(SAVANNAH)



Mapped, edited, and published by the Geological Survey
Control by USGS, USC&GS, and TVA
Culture and drainage in part compiled by Corps of Engineers,
U.S. Army, from aerial photographs taken 1942
Topography by plane-table surveys 1953
Polyconic projection. 1927 North American datum
10,000-foot grid based on New York coordinate system,
central zone
Red tint indicates area in which only
landmark buildings are shown
1000-meter Universal Transverse Mercator grid, zone 18
Revisions shown in purple compiled from aerial photographs
taken 1976 and other source data. This information not
field checked. Map edited 1978

UTM GRID AND 1978 MAGNETIC NORTH
DECLINATION AT CENTER OF SHEET



CONTOUR INTERVAL 10 FEET
NATIONAL GEODETIC VERTICAL DATUM OF 1929

THIS MAP COMPLIES WITH NATIONAL MAP ACCURACY STANDARDS
FOR SALE BY U.S. GEOLOGICAL SURVEY, RESTON, VIRGINIA 22092
A FOLDER DESCRIBING TOPOGRAPHIC MAPS AND SYMBOLS IS AVAILABLE ON REQUEST



ROAD CLASSIFICATION
Primary highway, all weather
hard surface
Secondary highway, all weather,
hard surface
Light-duty road, all weather,
improved surface
Unimproved road, fair or dry
weather
Interstate Route
U.S. Route
State Route

GENEVA NORTH, N. Y.
N 4252.5 - W 7652.5/7.5
1953
PHOTOREVISED 1978
AMS 5669 IV NW-SERIES V821

JUL 18 1979

1350