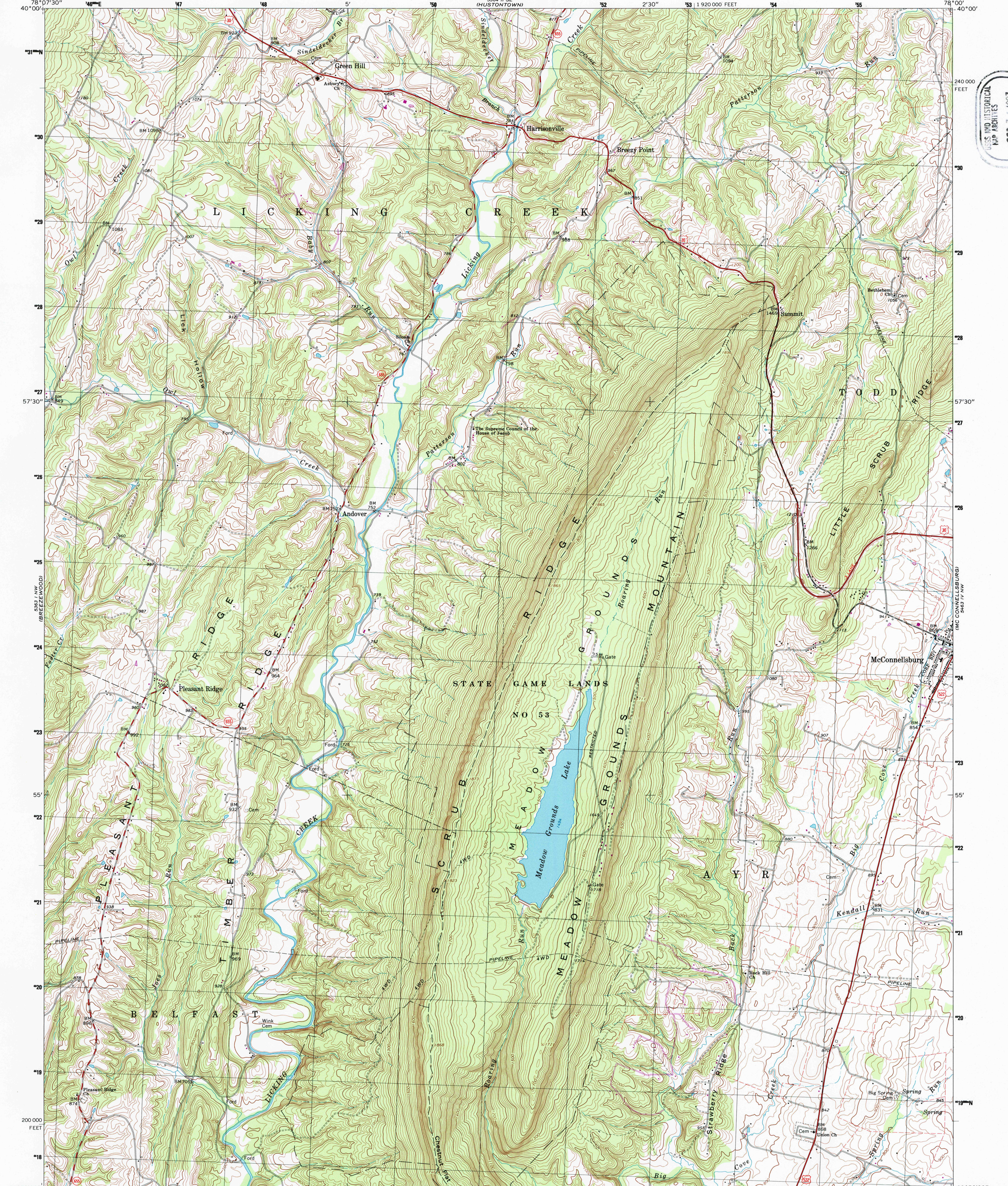
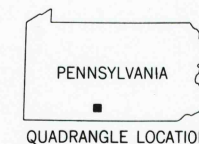
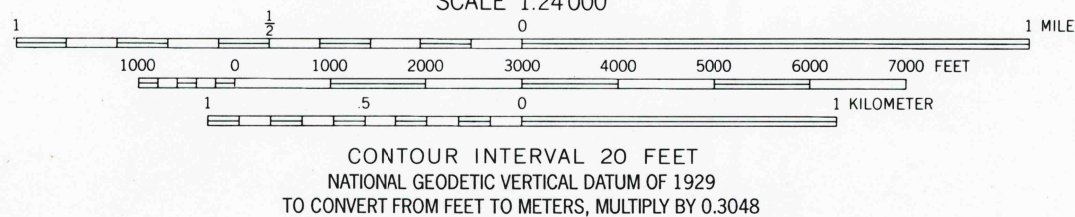
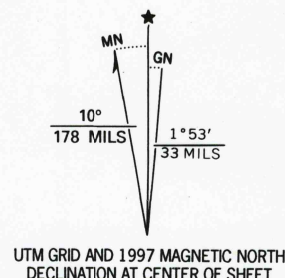


U.S. AND HISTORICAL
MAP ARCHIVES
OCT 31 1997
REC'D FILE COPY



Produced by the United States Geological Survey
Topography compiled 1966. Planimetry derived from imagery taken 1973. Photointerpreted using imagery dated 1994; no major culture or drainage changes observed. Survey control current as of 1967. Boundaries, other than corporate, revised 1997.
North American Datum of 1927 (NAD 27). Projection and 10 000-foot ticks: Pennsylvania coordinate system, south zone (Lambert conformal conic).
1000-meter Universal Transverse Mercator grid, zone 17.
North American Datum of 1983 (NAD 83) is shown by dashed corner ticks. The values of the shift between NAD 27 and NAD 83 for 7.5-minute intersections are obtainable from National Geodetic Survey NADCON software.
There may be private inholdings within the boundaries of the National or State reservations shown on this map.
Information shown in purple may not meet USGS content standards and may conflict with previously mapped contours.



ROAD CLASSIFICATION	
Primary highway, hard surface	Light-duty road, hard or improved surface
Secondary highway, hard surface	Unimproved road
Interstate Route	U. S. Route
	State Route

MEADOW GROUNDS, PA.

1994

DMA 5363 1 NE—SERIES V831

0579
9178060718725691