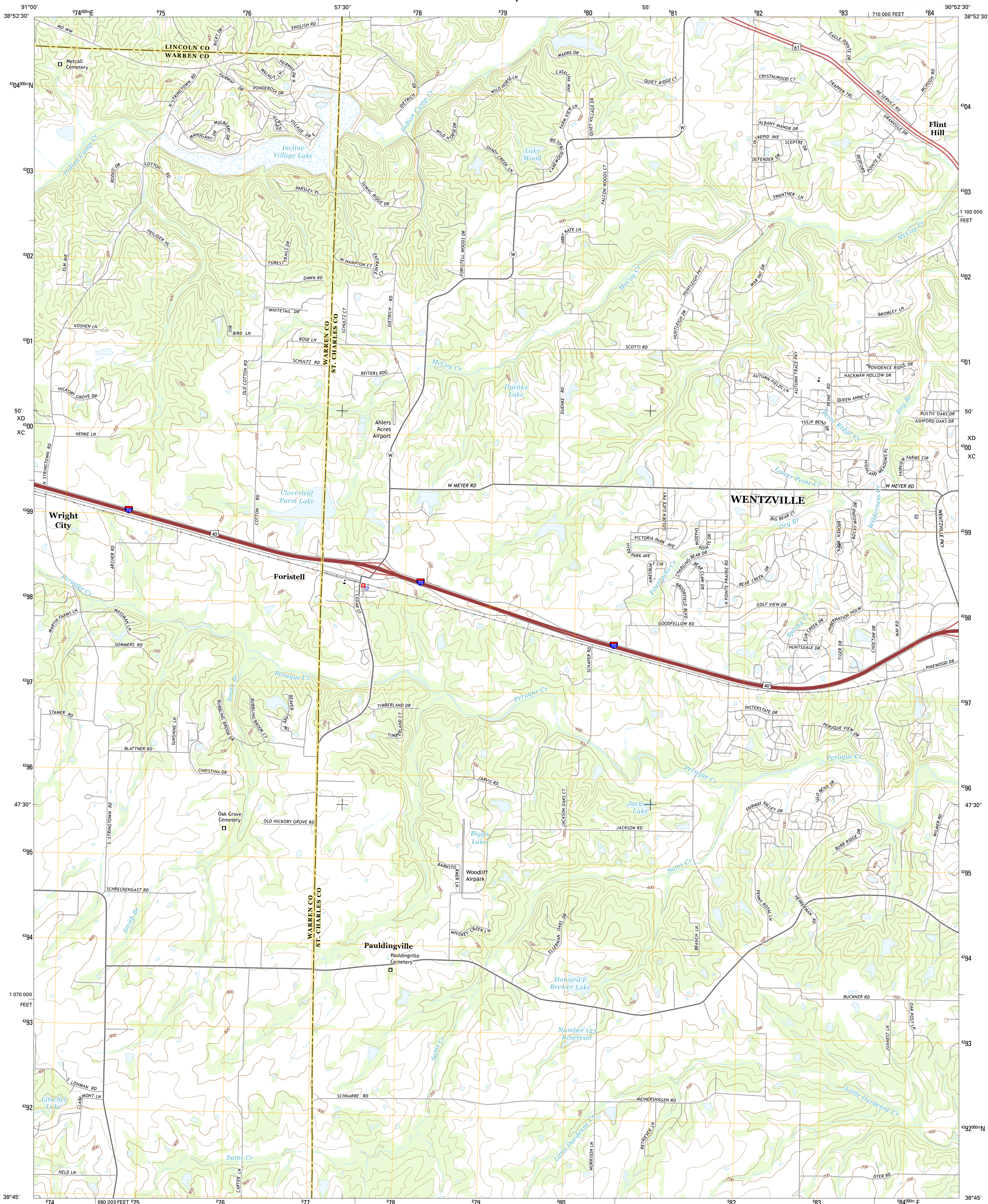




U.S. DEPARTMENT OF THE INTERIOR
U.S. GEOLOGICAL SURVEY



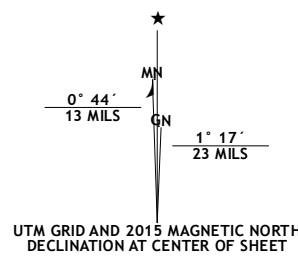
FORISTELL QUADRANGLE
MISSOURI
7.5-MINUTE SERIES



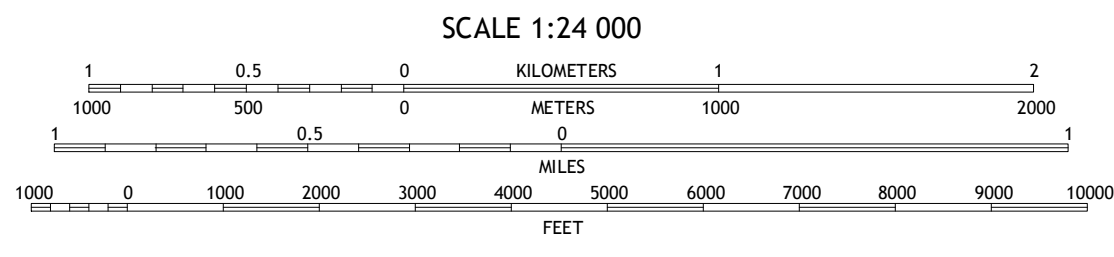
Produced by the United States Geological Survey
North American Datum of 1983 (NAD83)
World Geodetic System of 1984 (WGS84). Projection and
1000-meter grid: Universal Transverse Mercator, Zone 15S
10 000-foot ticks: Missouri Coordinate System of 1983 (east
zone)

This map is not a legal document. Boundaries may be
generalized for this map scale. Private lands within government
reservations may not be shown. Obtain permission before
entering private lands.

Imagery.....NAIP, June 2012
Roads.....HERE, ©2013
Names.....GNIS, 2013
Hydrography.....National Hydrography Dataset, 2012
Contours.....National Elevation Dataset, 2007
Boundaries.....Multiple sources; see metadata file 1972 - 2014
Public Land Survey System.....BLM, 2011



| U.S. National Grid |
|-----------------------|
| 100,000-m Square ID |
| XC -100 |
| Grid Zone Designation |
| 15S |



CONTOUR INTERVAL 20 FEET
NORTH AMERICAN VERTICAL DATUM OF 1988
This map was produced to conform with the
National Geospatial Program US Topo Product Standard, 2011.
A metadata file associated with this product is draft version 0.6.18



| ADJOINING QUADRANGLES |
|-----------------------|
| 1 Warrenton NE |
| 2 Troy |
| 3 Maryknoll |
| 4 Wright City |
| 5 Wentzville |
| 6 Marthasville |
| 7 New Helvie |
| 8 Defiance |

| ROAD CLASSIFICATION |
|---------------------|
| Expressway |
| Secondary Hwy |
| Ramp |
| Interstate Route |
| Local Connector |
| Local Road |
| 4WD |
| US Route |
| State Route |

FORISTELL, MO
2015

