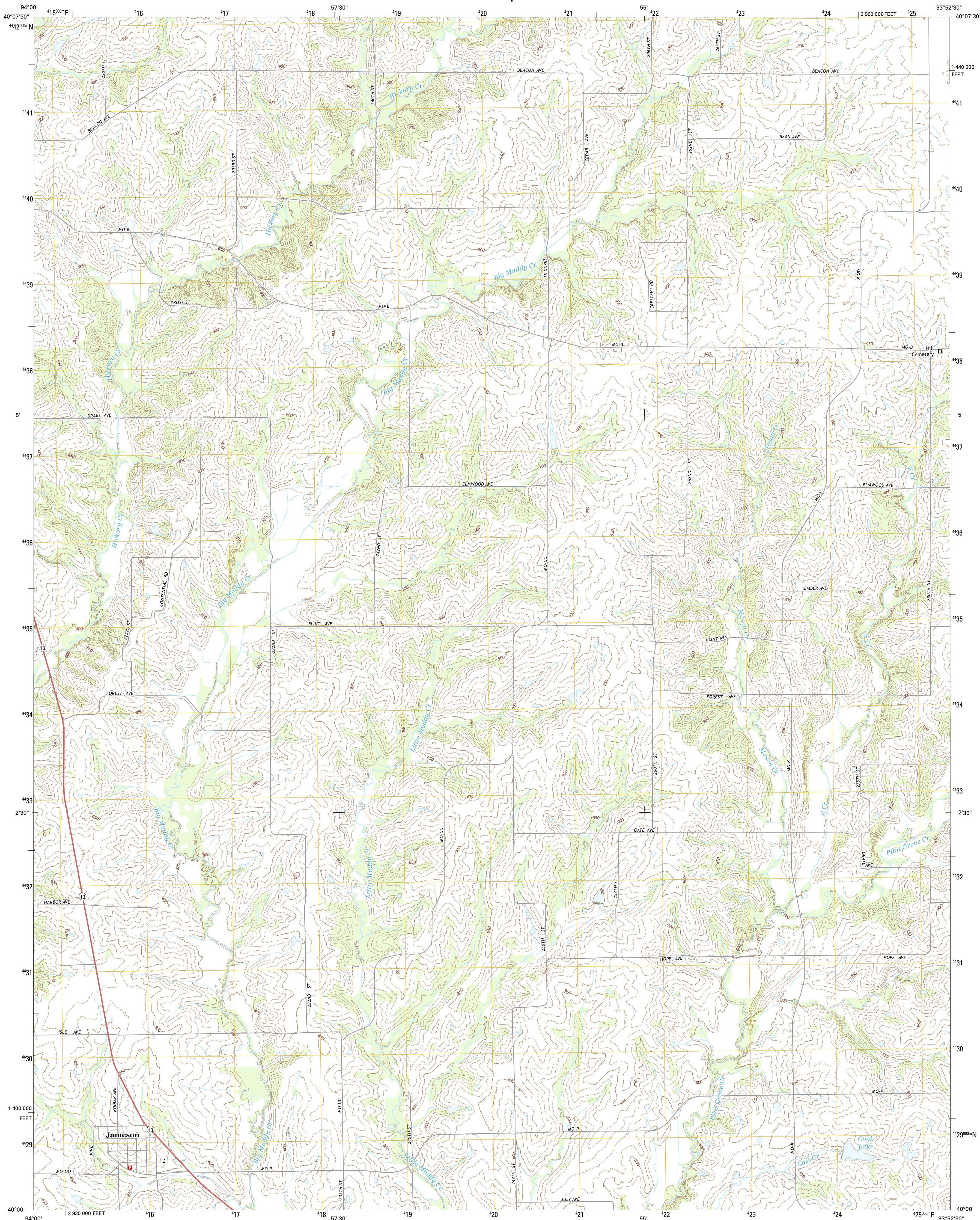




U.S. DEPARTMENT OF THE INTERIOR
U.S. GEOLOGICAL SURVEY



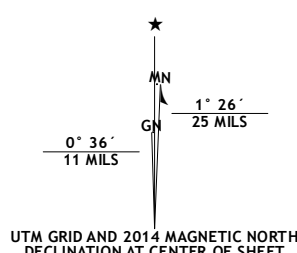
JAMESON QUADRANGLE
MISSOURI-DAVISS CO.
7.5-MINUTE SERIES



Produced by the United States Geological Survey
North American Datum of 1983 (NAD83)
World Geodetic System of 1984 (WGS84). Projection and
1 000-meter grid: Universal Transverse Mercator, Zone 15T
10 000-foot ticks: Missouri Coordinate System of 1983 (west
zone)

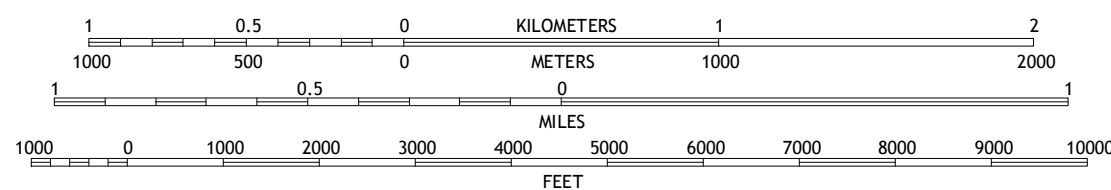
This map is not a legal document. Boundaries may be generalized for this map scale. Private lands within government reservations may not be shown. Obtain permission before entering private lands.

Imagery NAIP, June 20
Roads HERE, ©20
Names GNIS, 20
Hydrography National Hydrography Dataset, 20
Contours National Elevation Dataset, 20
Boundaries Multiple sources; see metadata file 1972
Public Land Survey System BLN, 20



U.S. National Grid
100,000-m Square ID
VE
Grid Zone Designation
15T

SCALE 1:24 000



CONTOUR INTERVAL 10 FEET
NORTH AMERICAN VERTICAL DATUM OF 1988

This map was produced to conform with the
US Geospatial Program US Topo Product Standard, 2011.
The data file associated with this product is draft version 0.6.18



QUADRANGLE LOCATION

ROAD CLASSIFICATION



1	2	3	1 Mitchellville
			2 Gilman City West
4		5	3 Gilman City East
			4 Coffey
6	7	8	5 Bancroft
			6 Altamont
			7 Gallatin
			8 Jamesport

ADJOINING QUADRANGLES

1	Mitchellville
2	Gilman City West
3	Gilman City East
4	Coffey
5	Bancroft
6	Altamont
7	Gallatin
8	Jamesport

JAMESON, MO
2014

