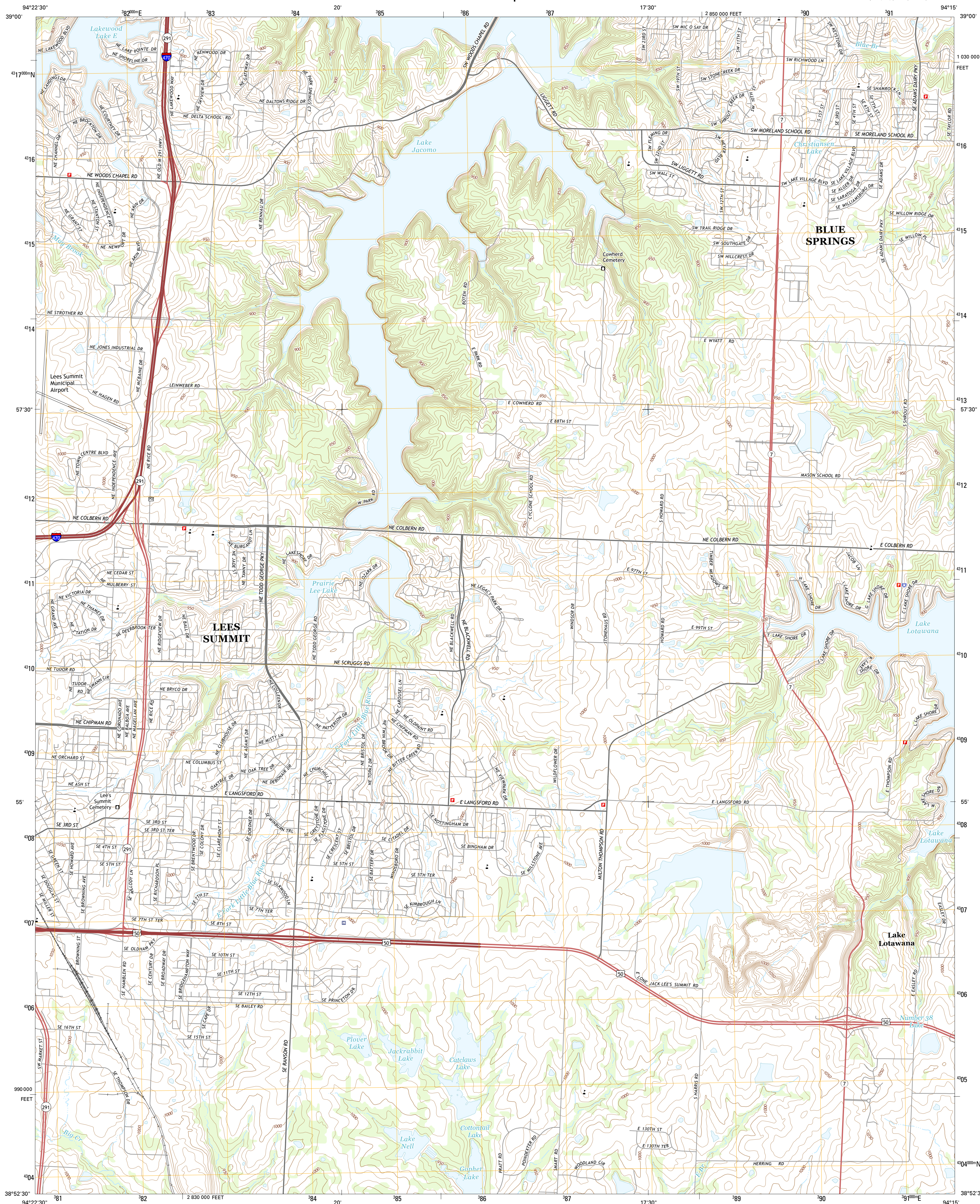




U.S. DEPARTMENT OF THE INTERIOR
U.S. GEOLOGICAL SURVEY



LAKE JACOMO QUADRANGLE
MISSOURI-JACKSON CO.
7.5-MINUTE SERIES

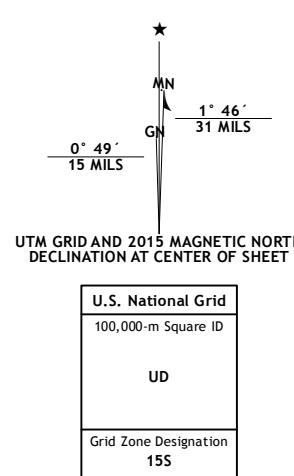


Produced by the United States Geological Survey

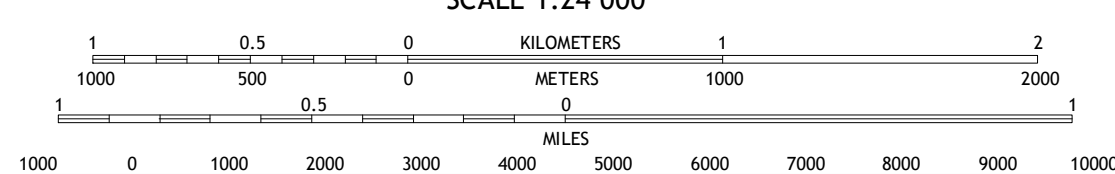
World Geodetic System of 1984 (WGS84). Projection and 1 000-meter grid: Universal Transverse Mercator, Zone 15S 10 000-foot ticks: Missouri Coordinate System of 1983 (west zone)

This map is not a legal document. Boundaries may be generalized for this map scale. Private lands within government reservations may not be shown. Obtain permission before entering private lands.

Imagery.....	NAP, June 20
Roads.....	HERE, ©20
Names.....	GNIS, 20
Hydrography.....	National Hydrography Dataset, 20
Contours.....	National Elevation Dataset, 20
Boundaries.....	Multiple sources; see metadata file 172 - 20
Public Land Survey System.....	BLM, 20



SCALE 1:24 000

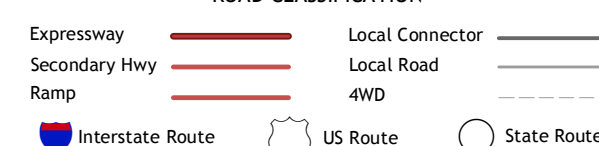


CONTOUR INTERVAL 10 FEET
NORTH AMERICAN VERTICAL DATUM OF 1988

This map was produced to conform with the
National Geospatial Program US Topo Product Standard, 2011.
A metadata file associated with this product is draft version 0.6.18



ROAD CLASSIFICATION



1	2	3
4		5
6	7	8

ADJOINING QUADRANGLES

- 1 Independence
- 2 Blue Springs
- 3 Oak Grove
- 4 Lees Summit
- 5 Tarsney Lakes
- 6 Raymore
- 7 Pleasant Hill
- 8 Strasburg

LAKE JACOMO, MO
2015

