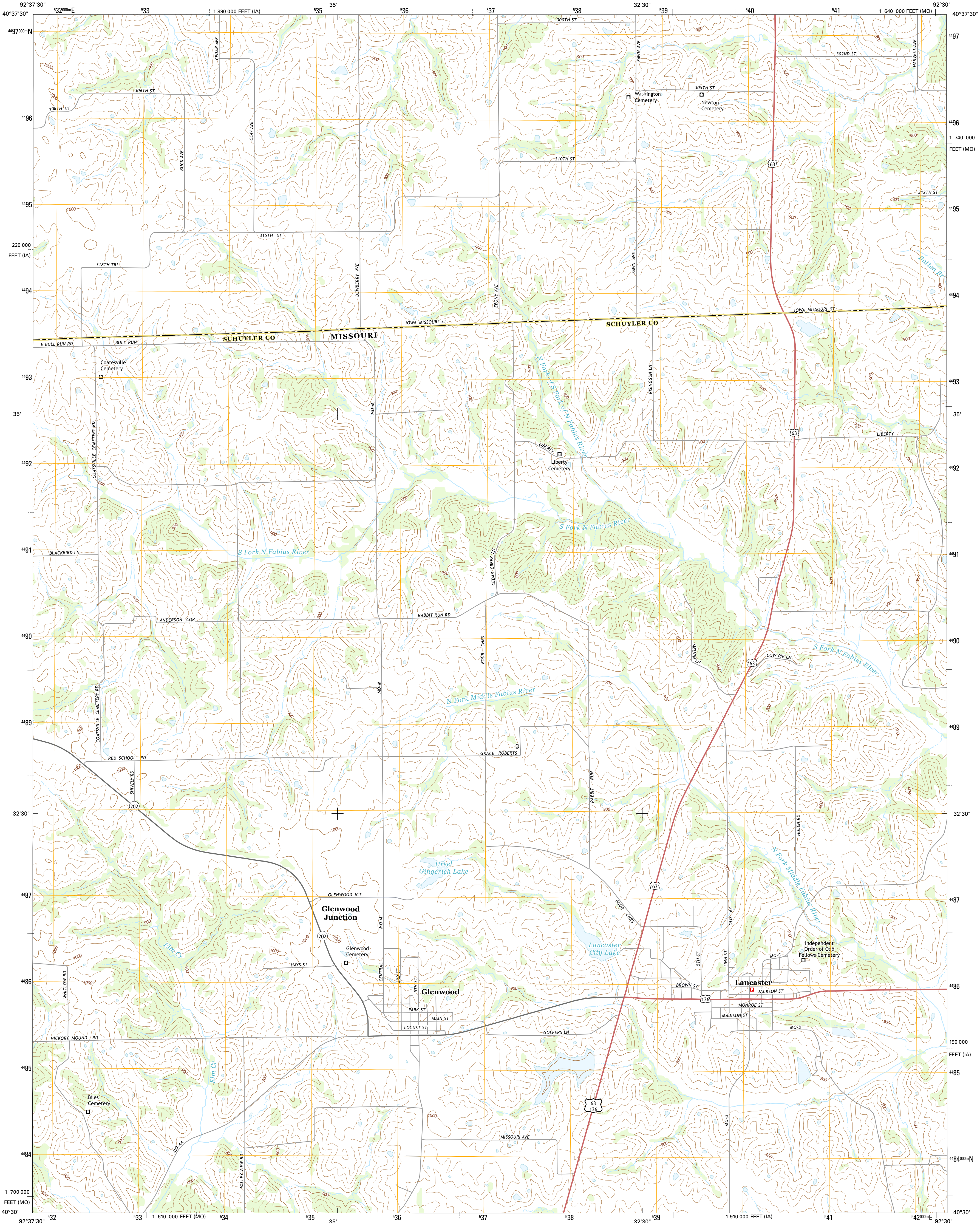




U.S. DEPARTMENT OF THE INTERIOR  
U.S. GEOLOGICAL SURVEY



LANCASTER QUADRANGLE  
MISSOURI-IOWA  
7.5-MINUTE SERIES



**Produced by the United States Geological Survey**  
North American Datum of 1983 (NAD83)  
World Geodetic System of 1984 (WGS84). Projection and  
1 000-meter grid: Universal Transverse Mercator, Zone 15T  
10 000-foot ticks: Missouri Coordinate System of 1983 (central  
zone), Iowa Coordinate System of 1983 (south zone)

This map is not a legal document. Boundaries may be  
generalized for this map scale. Private lands within government  
reservations may not be shown. Obtain permission before  
entering private lands.

Imagery.....NAIP, June 2012 - July 2013  
Roads.....HERE, ©2013  
Names.....GNIS, 2013  
Hydrography.....National Hydrography Dataset, 2012  
Contours.....National Elevation Dataset, 2004  
Boundaries.....Multiple sources; see metadata file 1972 - 2014  
Public Land Survey System.....BLM, 2011

UTM GRID AND 2015 MAGNETIC NORTH  
DECLINATION AT CENTER OF SHEET

U.S. National Grid 100,000 m Square ID
WE
Grid Zone Designation 15T

**SCALE 1:24 000**

1 000 0 1000 2000 3000 4000 5000 6000 7000 8000 9000 10000

1 0.5 0 0.5 1 2

1000 500 0 500 1000 2000

1 0 1000 2000 3000 4000 5000 6000 7000 8000 9000 10000

0' 17" 5 MILES

0' 20" 6 MILES

KILOMETERS

METERS

FEET

CONTOUR INTERVAL 20 FEET  
NORTH AMERICAN VERTICAL DATUM OF 1988

This map was produced to conform with the  
National Geospatial Program US Topo Product Standard, 2011.  
A metadata file associated with this product is draft version 0.6.18



**ROAD CLASSIFICATION**

Expressway  
Secondary Hwy  
Ramp

Local Connector  
Local Road  
4WD

Interstate Route  
US Route  
State Route

ADJOINING QUADRANGLES

1	2	3
4	5	6
7	8	9

1 Moulton  
2 West Grove  
3 Bloomfield South  
4 Coatesville  
5 Bunker Hill  
6 Livonia  
7 Queen City  
8 Downing NW

**LANCASTER, MO-IA**  
2015

