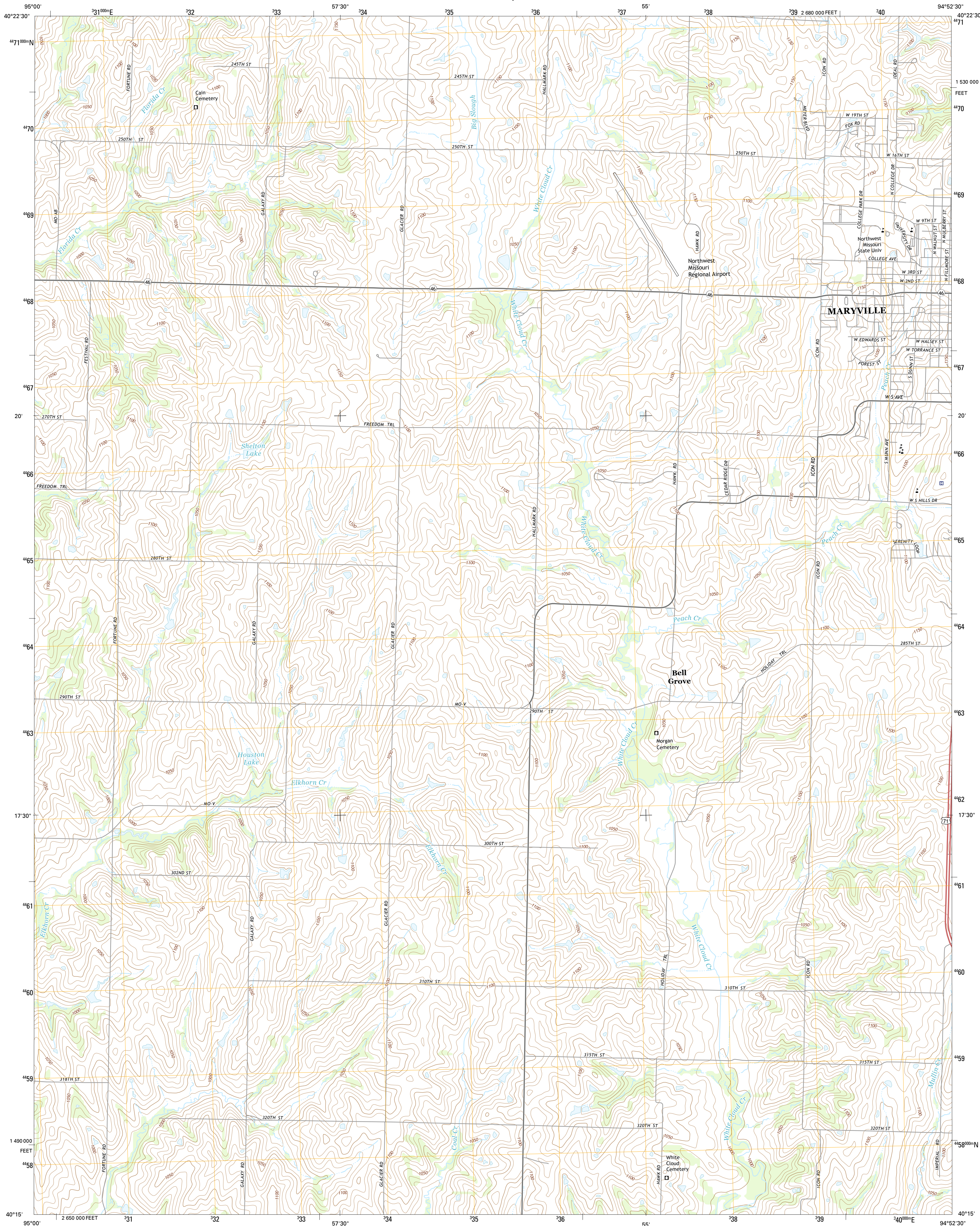




U.S. DEPARTMENT OF THE INTERIOR  
U.S. GEOLOGICAL SURVEY



MARYVILLE WEST QUADRANGLE  
MISSOURI-NODAWAY CO.  
7.5-MINUTE SERIES



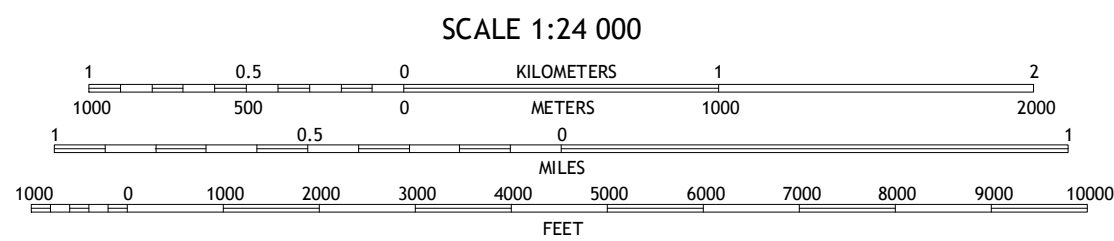
Produced by the United States Geological Survey  
North American Datum of 1983 (NAD83)  
World Geodetic System of 1984 (WGS84). Projection and  
1 000-meter grid: Universal Transverse Mercator, Zone 15T  
10 000-foot ticks: Missouri Coordinate System of 1983 (west zone)

This map is not a legal document. Boundaries may be  
generalized for this map scale. Private lands within government  
reservations may not be shown. Obtain permission before  
entering private lands.

Imagery.....NAIP, June 2012  
Roads.....HERE, ©2013  
Names.....GNIS, 2013  
Hydrography.....National Hydrography Dataset, 2012  
Contours.....National Elevation Dataset, 2005  
Boundaries.....Multiple sources; see metadata file 1972 - 2014  
Public Land Survey System.....BLM, 2011

UTM GRID AND 2014 MAGNETIC NORTH  
DECLINATION AT CENTER OF SHEET

U.S. National Grid  
100,000-m Square ID  
UE  
Grid Zone Designation  
15T



CONTOUR INTERVAL 10 FEET  
NORTH AMERICAN VERTICAL DATUM OF 1988  
This map was produced to conform with the  
National Geospatial Program US Topo Product Standard, 2011.  
A metadata file associated with this product is draft version 0.6.18



ROAD CLASSIFICATION  
Expressway  
Secondary Hwy  
Ramp  
Interstate Route  
US Route  
State Route  
Local Connector  
Local Road  
4WD

1	2	3
4	5	6
7	8	9

ADJOINING QUADRANGLES

1 Burlington Junction  
2 Wilcox  
3 Pickering  
4 Skidmore  
5 Maryville East  
6 Matfield  
7 Boikow NW  
8 Barnard

MARYVILLE WEST, MO  
2014

