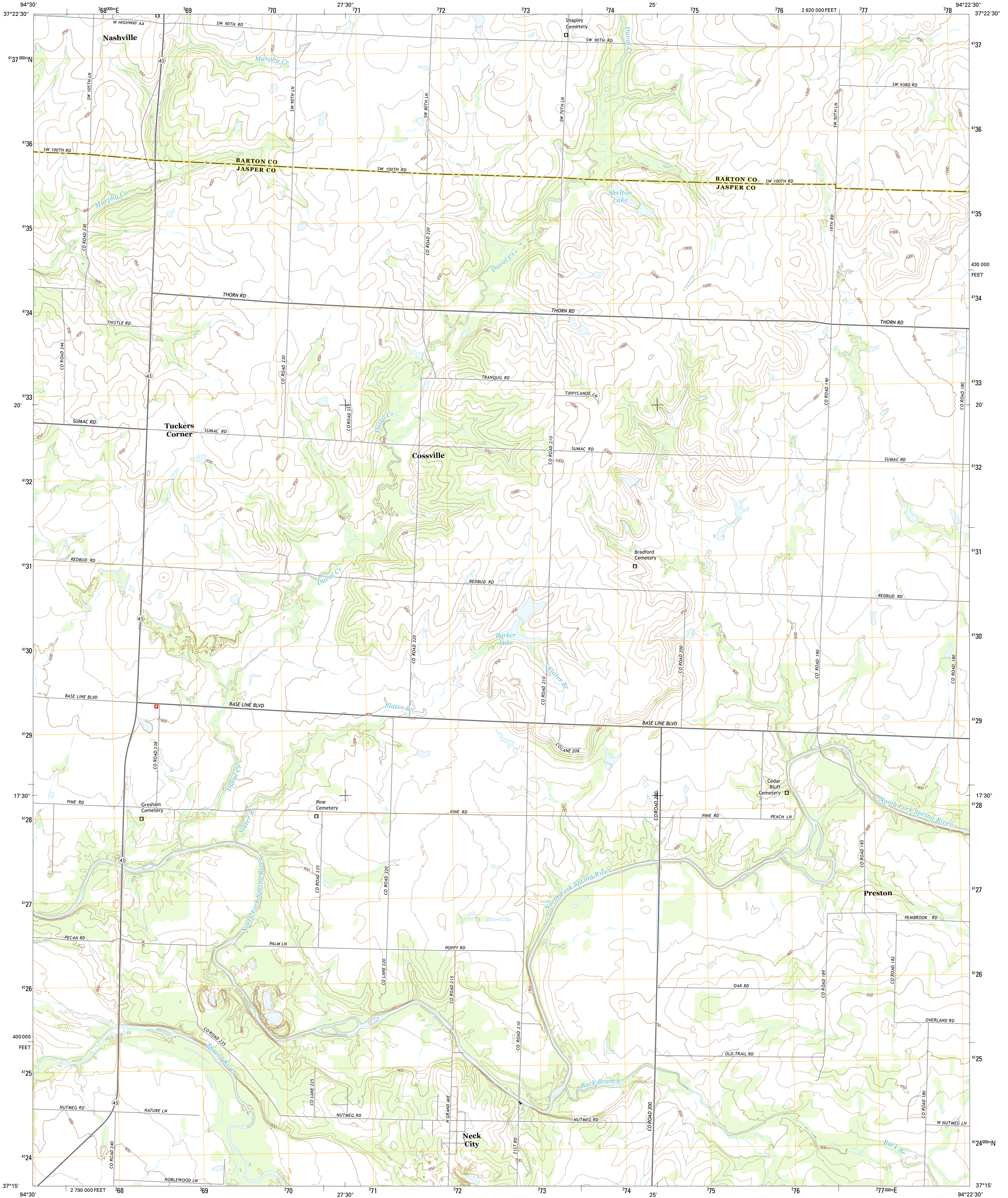




U.S. DEPARTMENT OF THE INTERIOR
U.S. GEOLOGICAL SURVEY



NECK CITY QUADRANGLE
MISSOURI
7.5-MINUTE SERIES



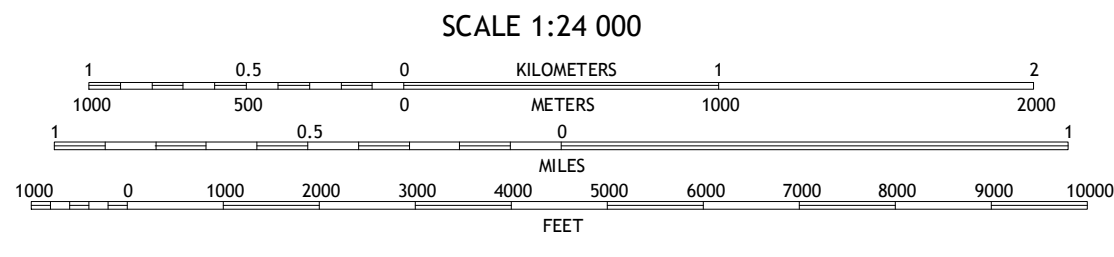
Produced by the United States Geological Survey
North American Datum of 1983 (NAD83)
World Geodetic System of 1984 (WGS84). Projection and
1 000-meter grid: Universal Transverse Mercator, Zone 15S
10 000-foot ticks: Missouri Coordinate System of 1983 (west
zone)

This map is not a legal document. Boundaries may be
generalized for this map scale. Private lands within government
reservations may not be shown. Obtain permission before
entering private lands.

Imagery.....NAIP, June 2012
Roads.....HERE, ©2013
Names.....National Hydrography Dataset, 2012
Hydrography.....National Elevation Dataset, 2012
Contours.....Multiple sources; see metadata file 1972-2014
Public Land Survey System.....BLM, 2011

UTM GRID AND 2013 MAGNETIC NORTH
DECLINATION AT CENTER OF SHEET

U.S. National Grid 100,000-m Square ID
UB
Grid Zone Designation 15S



CONTOUR INTERVAL 10 FEET
NORTH AMERICAN VERTICAL DATUM OF 1988
This map was produced to conform with the
National Geospatial Program US Topo Product Standard, 2011.
A metadata file associated with this product is draft version 0.6.18



ROAD CLASSIFICATION

Expressway	Local Connector
Secondary Hwy	Local Road
Ramp	4WD
Interstate Route	US Route
	State Route

1	2	3
4	5	6
7	8	

ADJOINING QUADRANGLES

1 Mindenmines
2 Nashville
3 Lamar South
4 Asbury
5 Jasper
6 Carl Junction
7 Webb City
8 Carthage

NECK CITY, MO
2015

