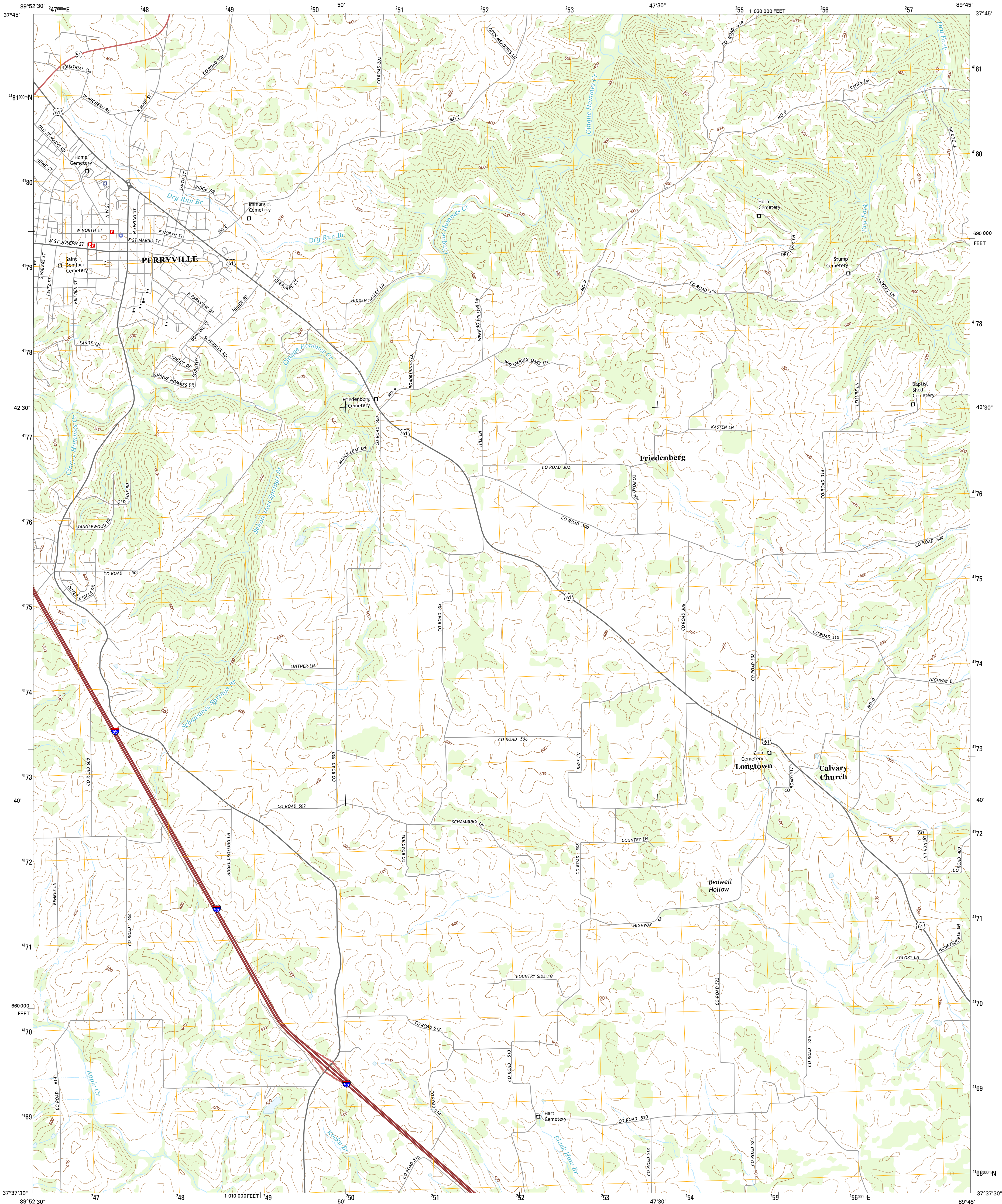




U.S. DEPARTMENT OF THE INTERIOR
U.S. GEOLOGICAL SURVEY



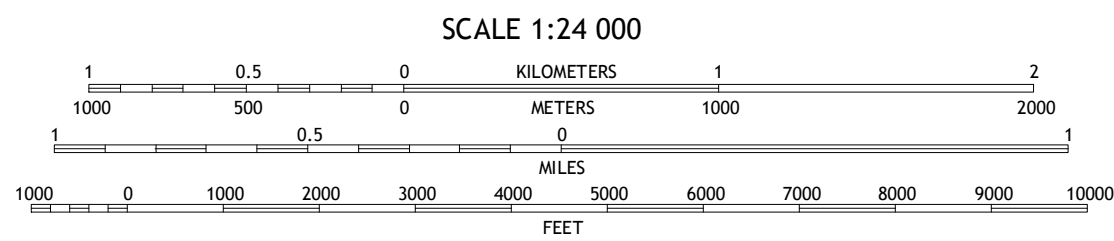
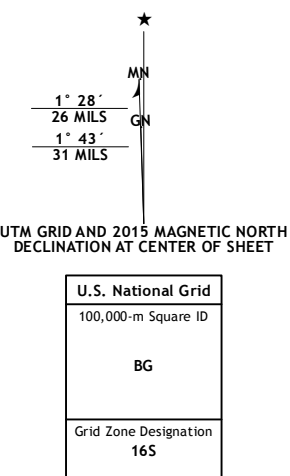
PERRYVILLE EAST QUADRANGLE
MISSOURI-PERRY CO.
7.5-MINUTE SERIES



Produced by the United States Geological Survey
North American Datum of 1983 (NAD83)
World Geodetic System of 1984 (WGS84), Projection and
1 000-meter grid: Universal Transverse Mercator, Zone 16S
10 000-foot ticks: Missouri Coordinate System of 1983 (east zone)

This map is not a legal document. Boundaries may be generalized for this map scale. Private lands within government reservations may not be shown. Obtain permission before entering private lands.

Imagery:.....NAIP, June 2012
Roads:.....HERE, ©2013
Names:.....GNIS, 2013
Hydrography:.....National Hydrography Dataset, 2012
Contours:.....National Elevation Dataset, 2007
Boundaries:.....Multiple sources; see metadata file 1972 - 2014
Public Land Survey System:.....BLM, 2011



CONTOUR INTERVAL 20 FEET
NORTH AMERICAN VERTICAL DATUM OF 1988
This map was produced to conform with the
National Geospatial Program US Topo Product Standard, 2011.
A metadata file associated with this product is draft version 0.6.18



ROAD CLASSIFICATION
Expressway
Secondary Hwy
Ramp
Interstate Route
US Route
Local Connector
Local Road
4WD
State Route

1	2	3
4	5	6
7	8	

ADJOINING QUADRANGLES

PERRYVILLE EAST, MO
2015

