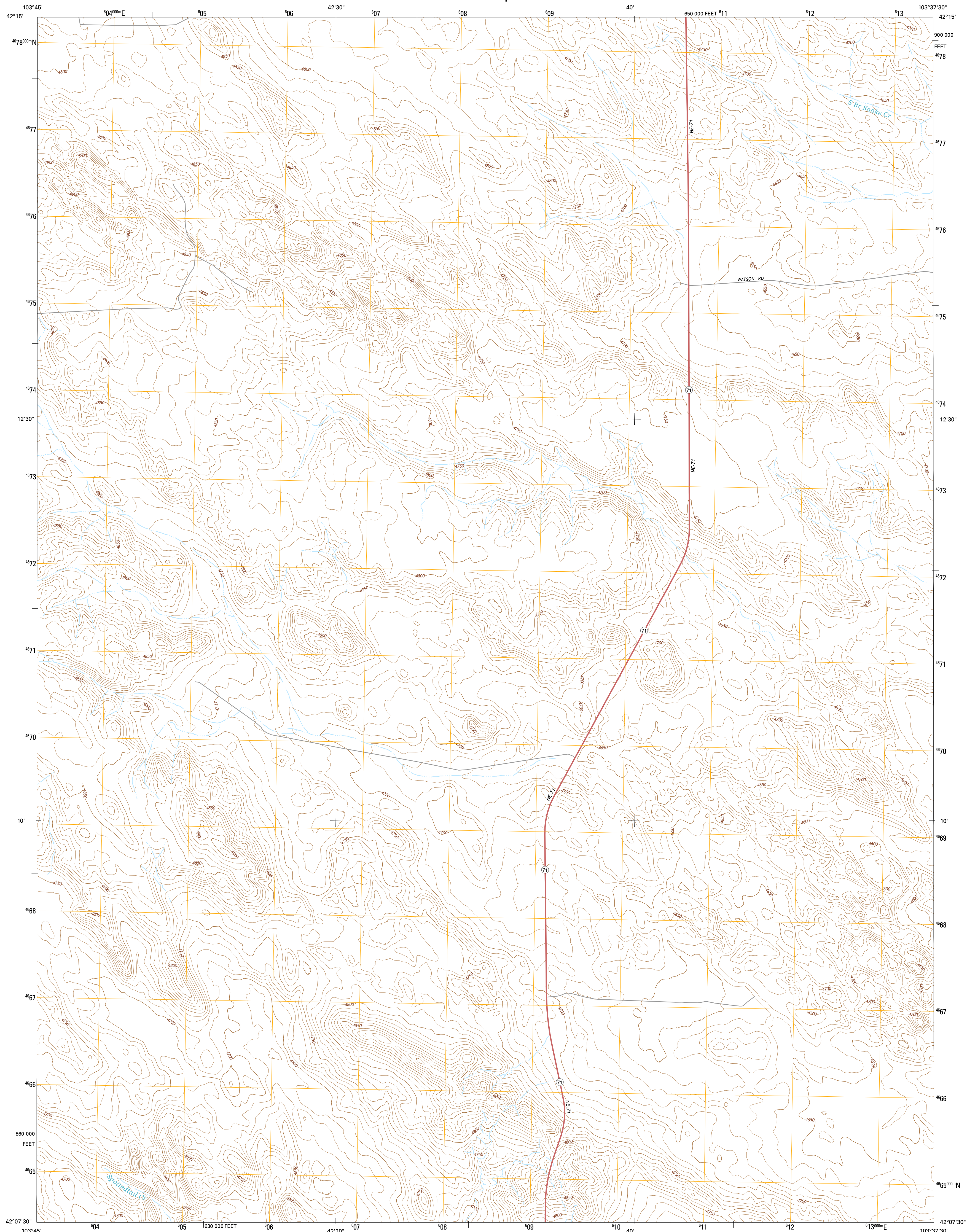




U.S. DEPARTMENT OF THE INTERIOR
U.S. GEOLOGICAL SURVEY



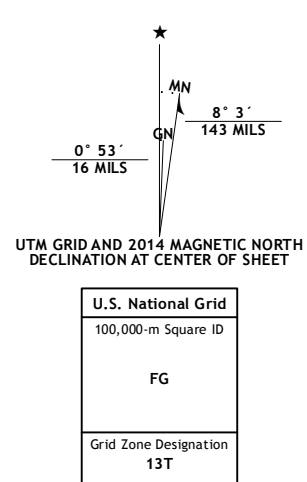
UNIVERSITY LAKE NW QUADRANGLE
NEBRASKA-SIOUX CO.
7.5-MINUTE SERIES



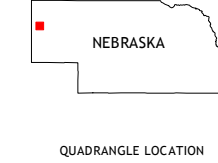
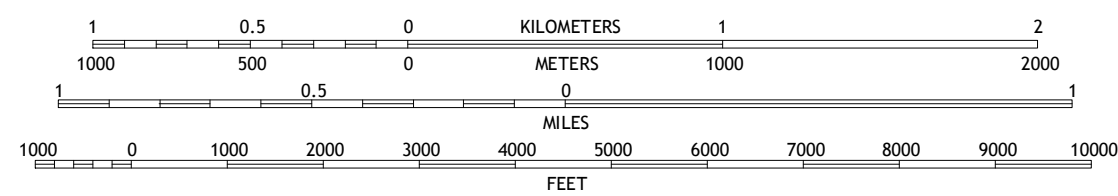
Produced by the United States Geological Survey
North American Datum of 1983 (NAD83)
World Geodetic System of 1984 (WGS84). Projection and
1 000-meter grid: Universal Transverse Mercator, Zone 13T
10 000-foot ticks: Nebraska Coordinate System of 1983

This map is not a legal document. Boundaries may be generalized for this map scale. Private lands within government reservations may not be shown. Obtain permission before entering private lands.

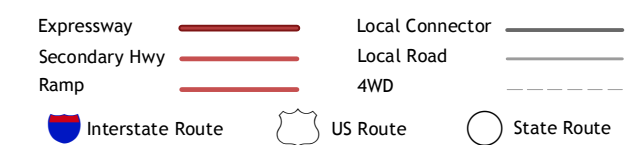
Imagery.....	NAIP, July	2012
Roads.....	HERE,	©2013
Names.....	GNIS,	2013
Hydrography.....	National Hydrography Dataset,	2012
Contours.....	National Elevation Dataset,	2002
Boundaries.....	Multiple sources; see metadata file	1972 - 2014



SCALE 1:24 000



ROAD CLASSIFICATION



1	2	3
4		5
6	7	8

ADJOINING QUADRANGLES

- 1 Mount Edna
- 2 Whistle Creek SW
- 3 Whistle Creek SE
- 4 Chalk Buttes NE
- 5 University Lake NE
- 6 Erdman Ranch
- 7 University Lake
- 8 University Lake SE

1	2	3
4		5
6	7	8

ADJOINING QUADRANGLES

- 1 Mount Edna
- 2 Whistle Creek SW
- 3 Whistle Creek SE
- 4 Chalk Buttes NE
- 5 University Lake NE
- 6 Erdman Ranch
- 7 University Lake
- 8 University Lake SE

UNIVERSITY LAKE NW, NE
2014