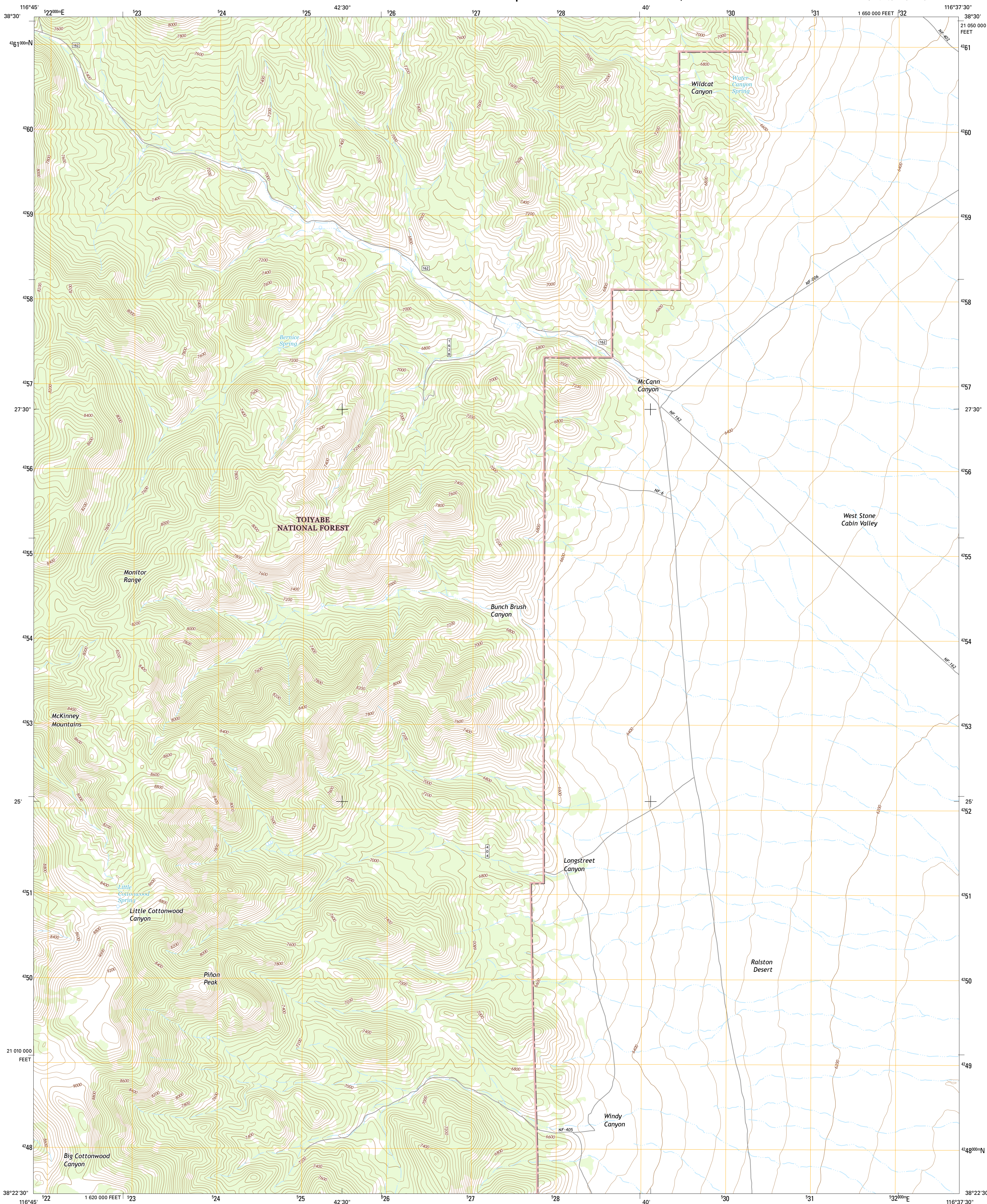




U.S. DEPARTMENT OF THE INTERIOR
U.S. GEOLOGICAL SURVEY



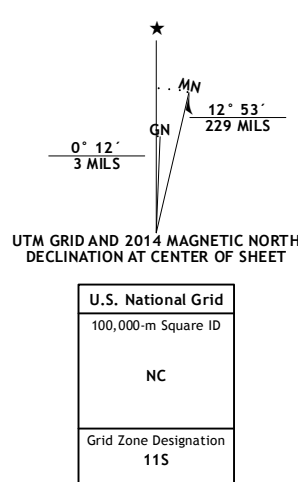
MCCANN CANYON QUADRANGLE
NEVADA-NYE CO.
7.5-MINUTE SERIES



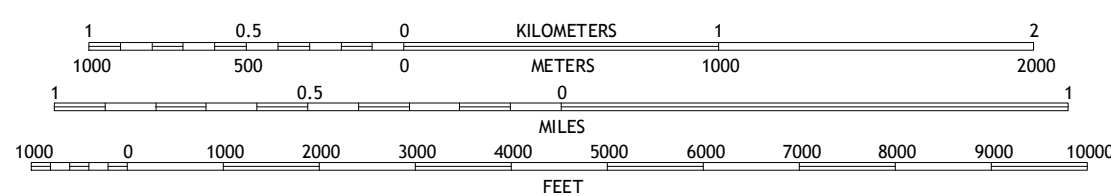
Produced by the United States Geological Survey
North American Datum of 1983 (NAD83)
World Geodetic System of 1984 (WGS84). Projection and
1 000-meter grid: Universal Transverse Mercator, Zone 11S
10 000-foot ticks: Nevada Coordinate System of 1983 (central
zone)

This map is not a legal document. Boundaries may be generalized for this map scale. Private lands within government reservations may not be shown. Obtain permission before entering private lands.

Imagery.....	NAIP,	August	2013
Roads.....	HERE,	©2013	
Roads within US Forest Service Lands.....
	with limited Forest Service updates,	2013	Data
Names.....	GNIS,	2013
Hydrography.....	National Hydrography Dataset,	2013	
Contours.....	National Elevation Dataset,	2001	
Boundaries.....	Multiple sources; see metadata file	1972	2014
Public Land Survey System.....	BLM,	2011



SCALE 1:24 000

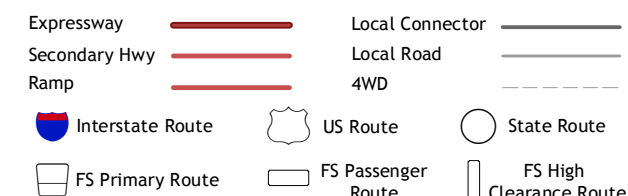


CONTOUR INTERVAL 40 FEET
NORTH AMERICAN VERTICAL DATUM OF 1988

This map was produced to conform with the
US Geospatial Program US Topo Product Standard, 2011.
The file associated with this product is draft version 0.6.18



ROAD CLASSIFICATION



Check with local Forest Service unit
for current travel conditions and restrictions.

1	2	3
4		5
6	7	8

ADJOINING QUADRANGLES

- 1 Belmont East
- 2 Elkhorn Canyon
- 3 Eagle Pass
- 4 Big Ten Peak East
- 5 McIntyre Summit
- 6 Saultsbury Basin
- 7 Georges Canyon Rim
- 8 Georges Canyon Rim SE

MCCANN CANYON, NV
2014