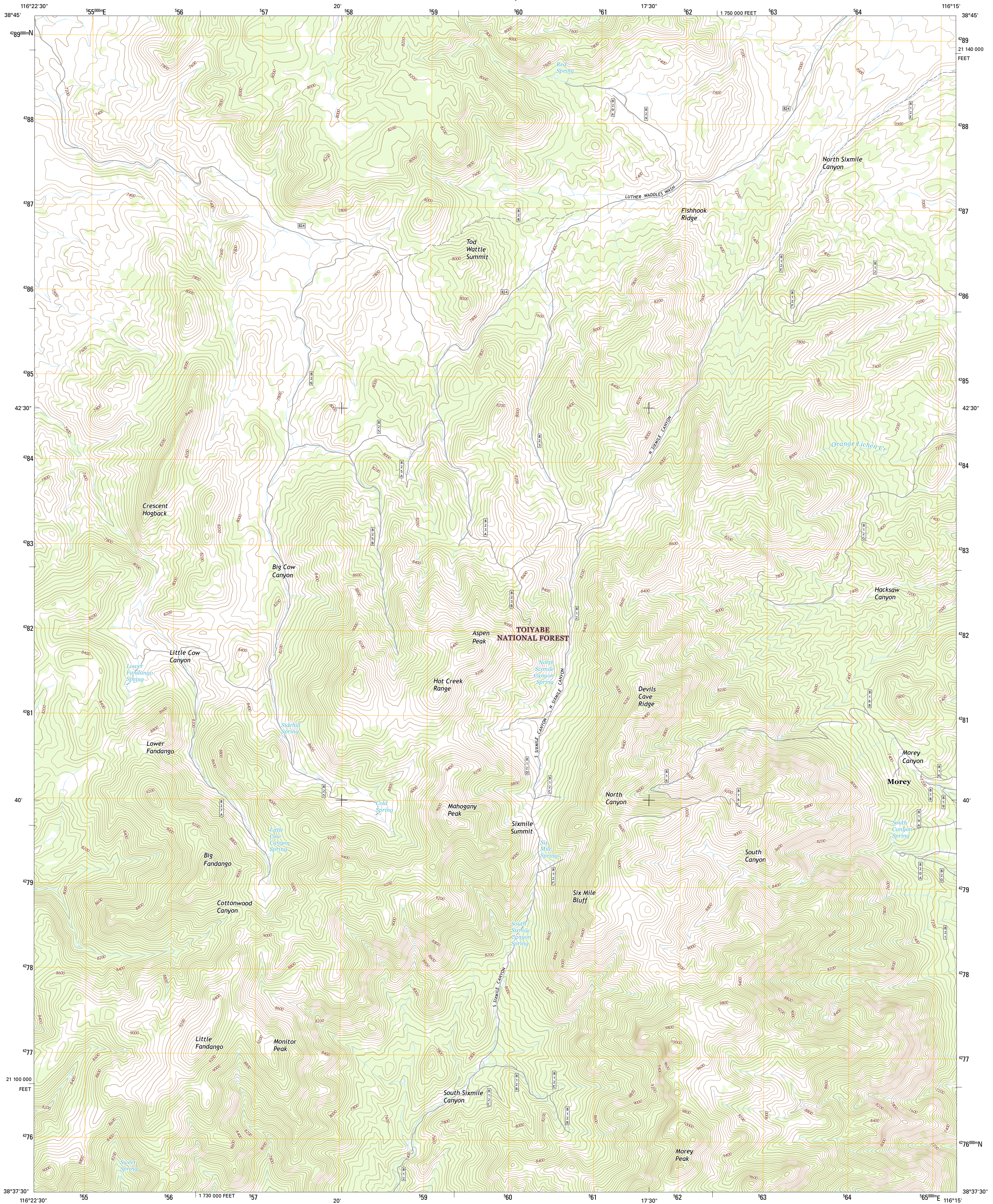




U.S. DEPARTMENT OF THE INTERIOR
U.S. GEOLOGICAL SURVEY



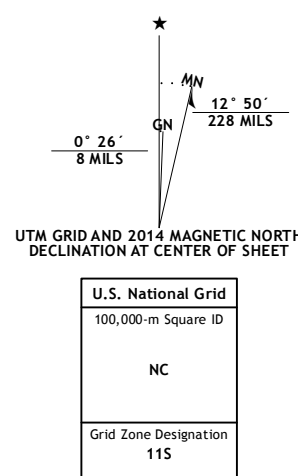
MOREY PEAK QUADRANGLE
NEVADA-NYE CO.
7.5-MINUTE SERIES



Produced by the United States Geological Survey
North American Datum of 1983 (NAD83)
World Geodetic System of 1984 (WGS84). Projection and
1 000-meter grid: Universal Transverse Mercator, Zone 11S
10 000-foot ticks: Nevada Coordinate System of 1983 (central
zone)

This map is not a legal document. Boundaries may be generalized for this map scale. Private lands within government reservations may not be shown. Obtain permission before entering private lands.

Imagery.....	NALIP,	August	2013
Roads.....	HERE,	©2013	
Roads within US Forest Service Lands.....	FSTopo	Data	
	with limited Forest Service updates,	2013	
Names.....	GNIS,	2013	
Hydrography.....	National Hydrography	Dataset,	2013
Contours.....	National Elevation	Dataset,	2001
Boundaries.....	Multiple sources; see metadata file	1972 -	2011
Public Land Survey System.....	BLM,		



SCALE 1:24 000

CONTOUR INTERVAL 40 FEET
NORTH AMERICAN VERTICAL DATUM OF 1988

This map was produced to conform with the
National Geospatial Program US Topo Product Standard, 2011.
Data file associated with this product is draft version 0.6.18



QUADRANGLE LOCATION

ROAD CLASSIFICATION

<p>Expressway </p> <p>Secondary Hwy </p> <p>Ramp </p>	<p>Local Connector </p> <p>Local Road </p> <p>4WD </p>
<p> Interstate Route</p> <p> FS Primary Route</p>	<p> US Route</p> <p> FS Passenger Route</p>
<p> State Route</p> <p> FS High Clearance Route</p>	

Check with local Forest Service unit
for current travel conditions and restrictions.

1	2	3
4		5
6	7	8

ADJOINING QUADRANGLES

- 1 Fish Springs
- 2 Fish Springs SE
- 3 Pritchards Station
- 4 Upper Fish Lake
- 5 Moores Station
- 6 Little Fish Lake
- 7 Hobble Canyon
- 8 Moores Station SW

ADJOINING QUADRANGLES

- 1 Fish Springs
- 2 Fish Springs SE
- 3 Pritchards Station
- 4 Upper Fish Lake
- 5 Moores Station
- 6 Little Fish Lake
- 7 Hobble Canyon
- 8 Moores Station SW

MOREY PEAK, NV
2014

