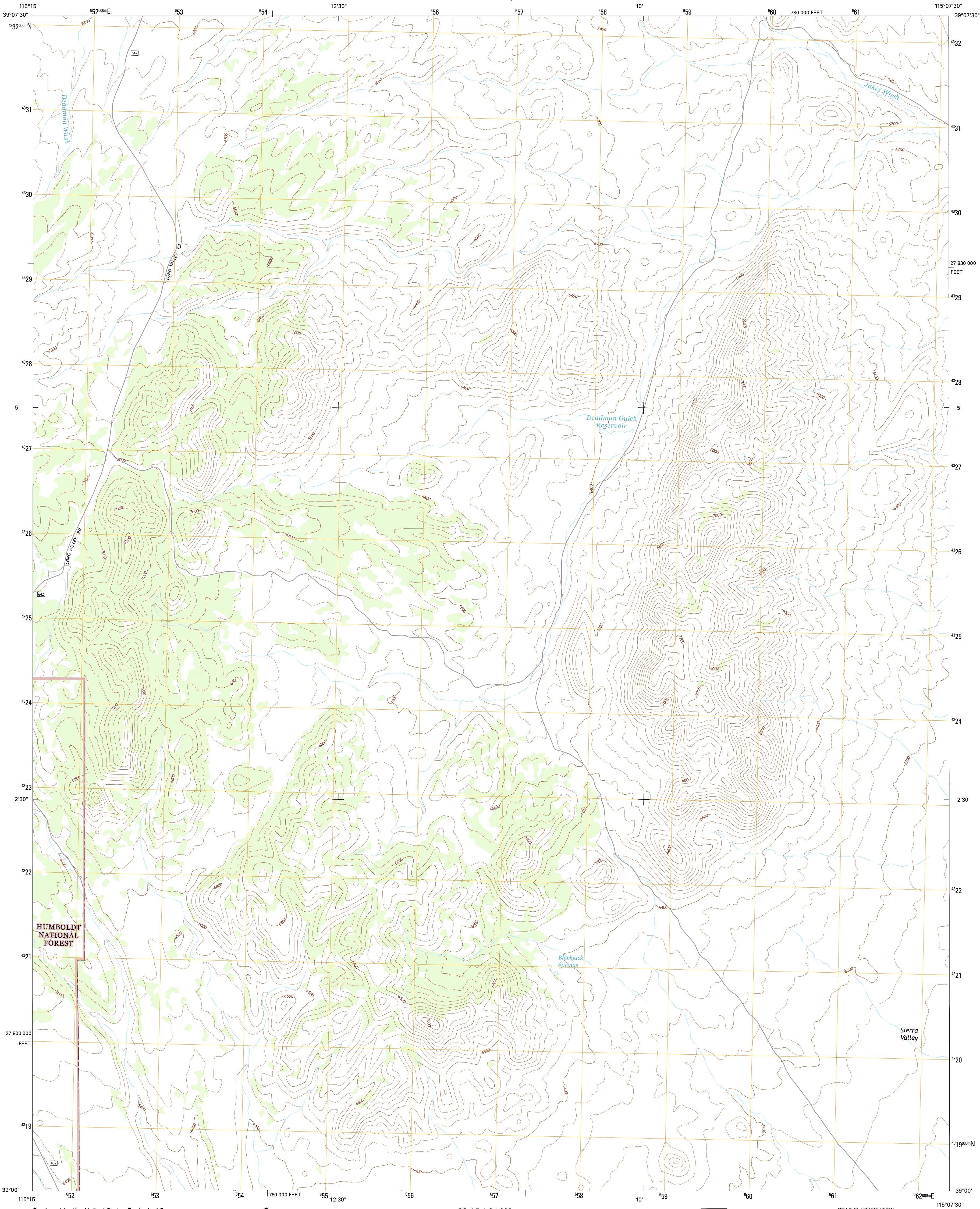




U.S. DEPARTMENT OF THE INTERIOR  
U.S. GEOLOGICAL SURVEY



BLACKJACK SPRINGS QUADRANGLE  
NEVADA-WHITE PINE CO.  
7.5-MINUTE SERIES



HUMBOLDT  
NATIONAL  
FOREST

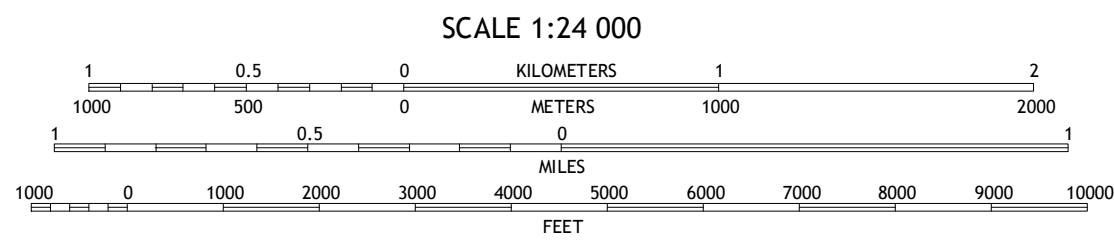
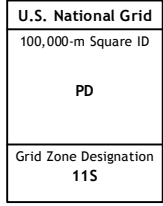
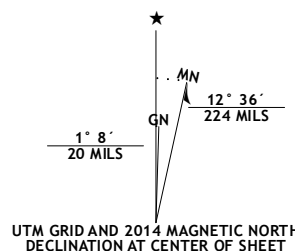
blackjack  
springs

Sierra  
Valley

Produced by the United States Geological Survey  
North American Datum of 1983 (NAD83)  
World Geodetic System of 1984 (WGS84) Projection and  
1 000-meter grid: Universal Transverse Mercator, Zone 11S  
10 000-foot ticks: Nevada Coordinate System of 1983 (east zone)

This map is not a legal document. Boundaries may be  
generalized for this map scale. Private lands within government  
reservations may not be shown. Obtain permission before  
entering private lands.

Imagery.....NAIP, September 2013  
Roads.....HERE, ©2013  
Roads within US Forest Service Lands.....FS Topo Data  
with limited Forest Service updates, 2013  
Names.....National Hydrography Dataset, 2013  
Hydrography.....National Hydrography Dataset, 2013  
Contours.....National Elevation Dataset, 2004  
Boundaries.....Multiple sources: see metadata file 1972 - 2014  
Public Land Survey System.....BLM, 2011



CONTOUR INTERVAL 40 FEET  
NORTH AMERICAN VERTICAL DATUM OF 1988  
This map was produced to conform with the  
National Geospatial Program US Topo Product Standard, 2011.  
A metadata file associated with this product is draft version 0.6.18



1	2	3
4	5	6
7	8	9

- 1 Limestone Peak
- 2 Railroad Crossing Dam
- 3 Grouse Wash
- 4 Willow Grove
- 5 Preston Reservoir
- 6 Horse Track Spring
- 7 Badger Hole Spring
- 8 Preston

ROAD CLASSIFICATION			
Expressway	Local Connector	Local Road	4WD
Interstate Route	US Route	State Route	FS High Clearance Route
FS Primary Route	FS Passenger Route	FS High Clearance Route	

Check with local Forest Service unit  
for current travel conditions and restrictions.

BLACKJACK SPRINGS, NV  
2014

