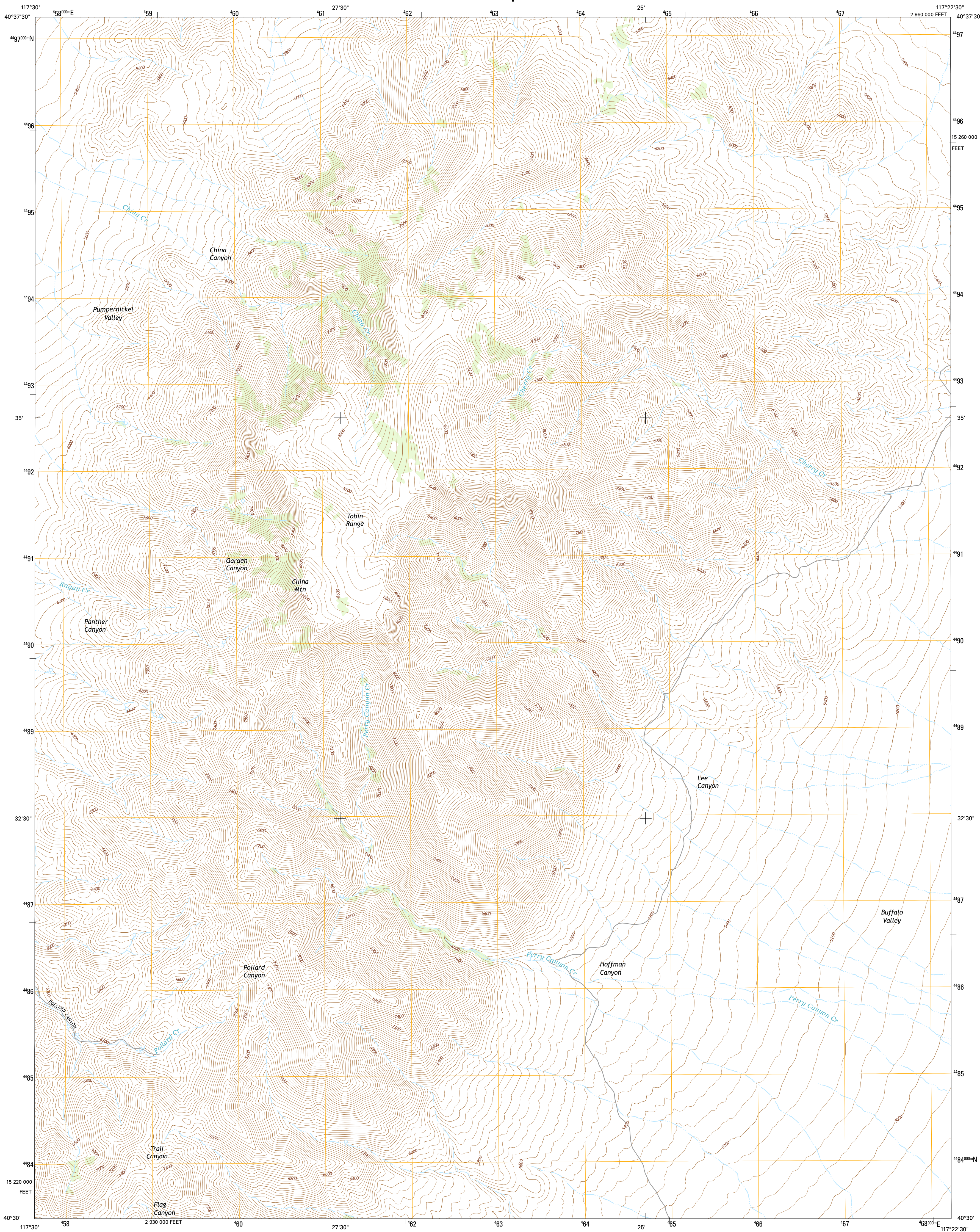




U.S. DEPARTMENT OF THE INTERIOR
U.S. GEOLOGICAL SURVEY



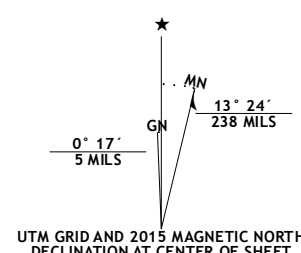
CHINA MOUNTAIN QUADRANGLE
NEVADA-PERSHING CO.
7.5-MINUTE SERIES



Produced by the United States Geological Survey
North American Datum of 1983 (NAD83)
World Geodetic System of 1984 (WGS84). Projection and
1 000-meter grid: Universal Transverse Mercator, Zone 11T
10 000-foot ticks: Nevada Coordinate System of 1983 (west
zone)

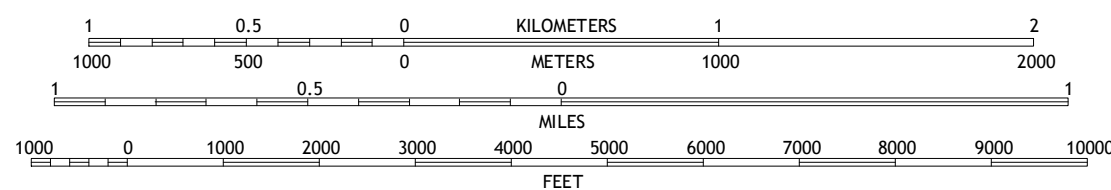
This map is not a legal document. Boundaries may be generalized for this map scale. Private lands within government reservations may not be shown. Obtain permission before entering private lands.

Imagery.....	NAIP, July 2013
Roads.....	HERE, ©2013
Names.....	GNIS, 2013
Hydrography.....	National Hydrography Dataset, 2013
Contours.....	National Elevation Dataset, 1999
Boundaries.....	Multiple sources; see metadata file 1972 - 2014
Public Land Survey System.....	BLM, 2011



U.S. National Grid
100,000-m Square ID
ME
Grid Zone Designation
11T

SCALE 1:24 000



CONTOUR INTERVAL 40 FEET
NORTH AMERICAN VERTICAL DATUM OF 1988

This map was produced to conform with the National Geospatial Program US Topo Product Standard, 2011. A metadata file associated with this product is draft version 0.6.18



QUADRANGLE LOCATION

ROAD CLASSIFICATION



1	2	3	1 Sheep Ranch Canyon
4		5	2 Smelser Pass
6	7	8	3 Cherry Creek NE
			4 Panther Canyon
			5 Cherry Creek SE
			6 Mount Tobin
			7 Buffalo Springs
			8 Buffalo Springs NE

ADJOINING QUADRANGLES

CHINA MOUNTAIN, NV
2015

