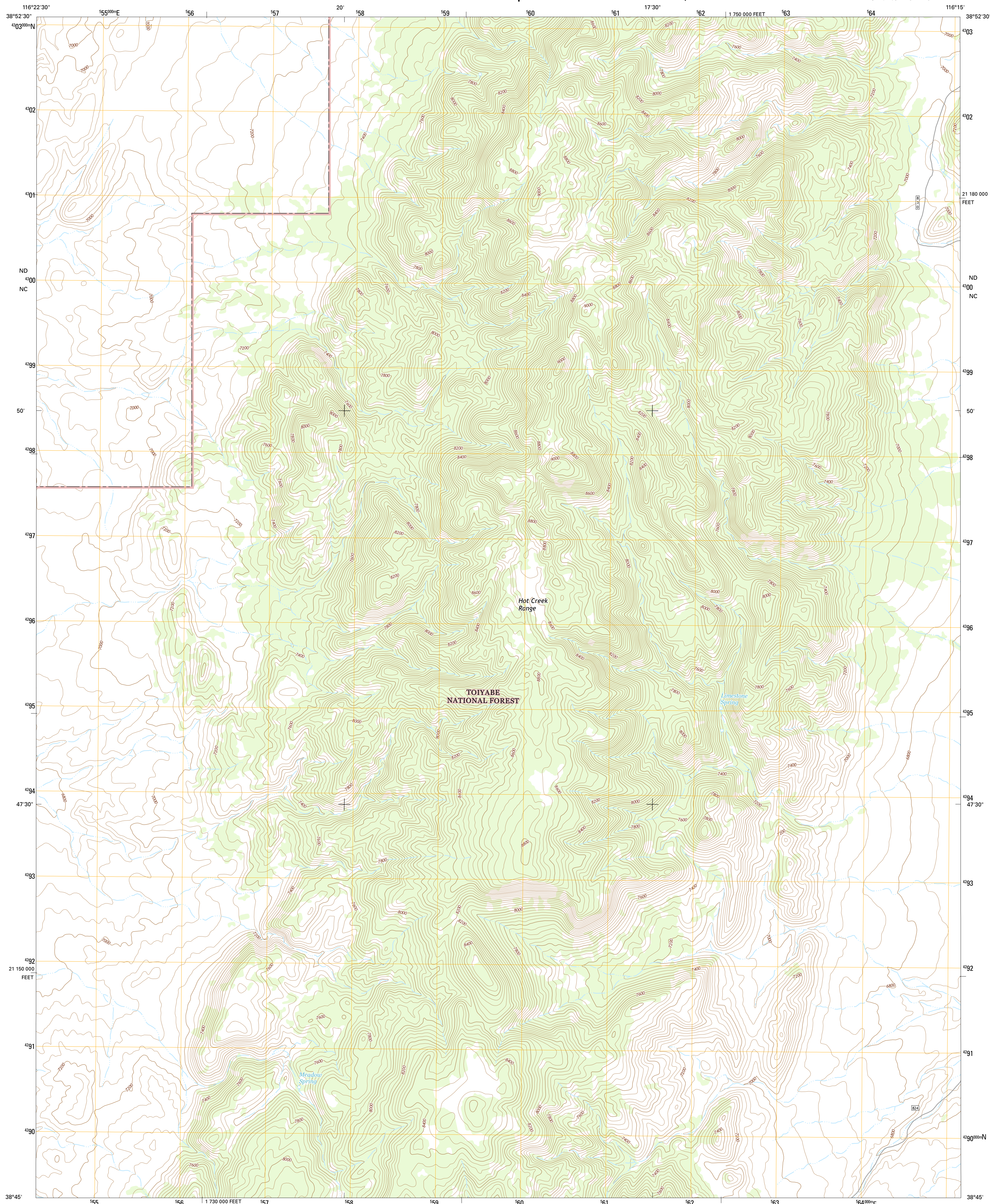




U.S. DEPARTMENT OF THE INTERIOR
U.S. GEOLOGICAL SURVEY



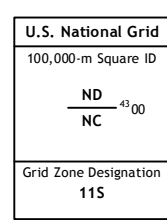
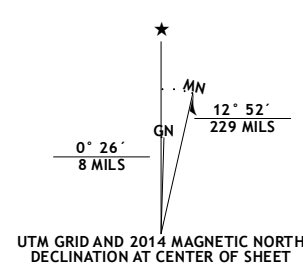
FISH SPRINGS SE QUADRANGLE
NEVADA-NYE CO.
7.5-MINUTE SERIES



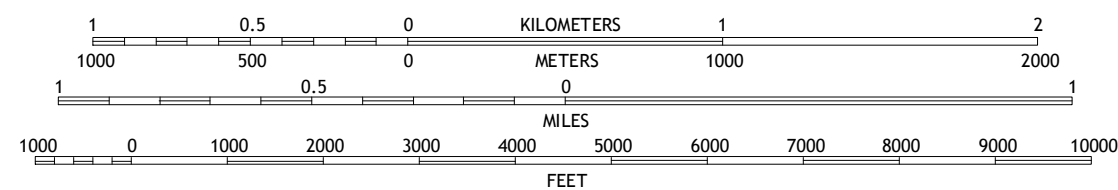
Produced by the United States Geological Survey
North American Datum of 1983 (NAD83)
World Geodetic System of 1984 (WGS84). Projection and
1 000-meter grid: Universal Transverse Mercator, Zone 11S
10 000-foot ticks: Nevada Coordinate System of 1983 (central
zone)

This map is not a legal document. Boundaries may be generalized for this map scale. Private lands within government reservations may not be shown. Obtain permission before entering private lands.

Imagery.....	NALIP,	August	2013
Roads.....	HERE,	©2013	
Roads within US Forest Service Lands.....	FTSTPO	Data	
	with limited Forest Service updates,	2013	
Names.....	GNIS,	2013	
Hydrography.....	National Hydrography Dataset,	2013	
Contours.....	National Elevation Dataset,	2001	
Boundaries.....	Multiple sources; see metadata file	1972 - 2014	
Public Land Survey System.....	BLM,	2011	



SCALE 1:24 000



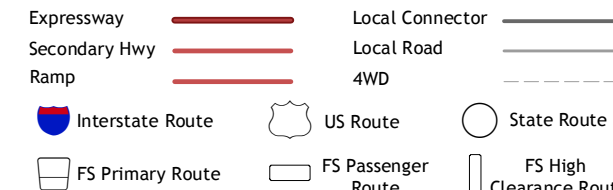
CONTOUR INTERVAL 40 FEET
NORTH AMERICAN VERTICAL DATUM OF 1988

This map was produced to conform with the
National Geospatial Program US Topo Product Standard, 2011.
A metadata file associated with this product is draft version 0.6.18



QUADRANGLE LOCATION

ROAD CLASSIFICATION



Check with local Forest Service unit
for current travel conditions and restrictions.

1	2	3	1 Stargo Creek
4		5	2 Fish Springs NE
6	7	8	3 Park Mountain

ADJOINING QUADRANGLES

- 4 Fish Springs
- 5 Pritchards Station
- 6 Upper Fish Lake
- 7 Morey Peak
- 8 Moores Station

1 Stargo Creek
2 Fish Springs NE
3 Park Mountain
4 Fish Springs
5 Pritchards Station
6 Upper Fish Lake
7 Morey Peak
8 Moores Station

FISH SPRINGS SE, NV
2014

