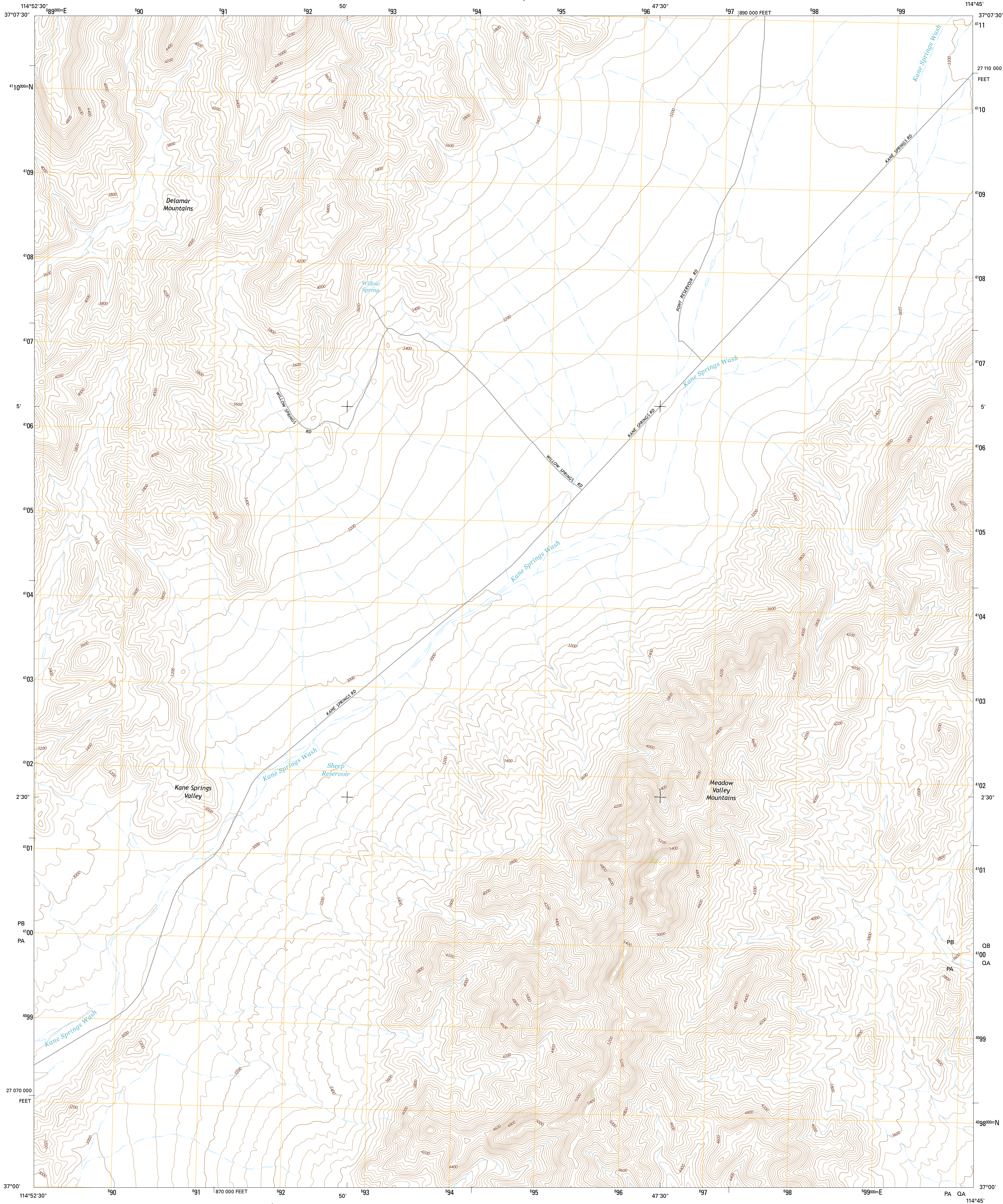




U.S. DEPARTMENT OF THE INTERIOR
U.S. GEOLOGICAL SURVEY



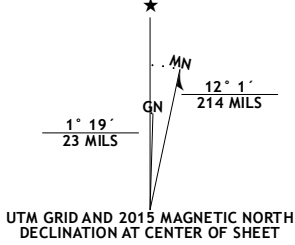
KANE SPRINGS VALLEY QUADRANGLE
NEVADA-LINCOLN CO.
7.5-MINUTE SERIES



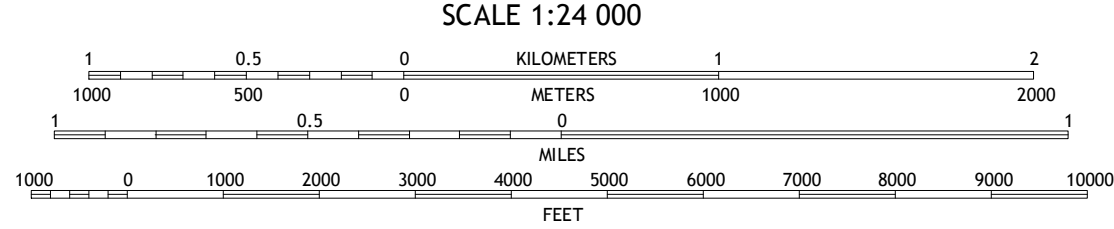
Produced by the United States Geological Survey
North American Datum of 1983 (NAD83)
World Geodetic System of 1984 (WGS84). Projection and
1 000-meter grid: Universal Transverse Mercator, Zone 11S
10 000-foot ticks: Nevada Coordinate System of 1983 (east zone)

This map is not a legal document. Boundaries may be
generalized for this map scale. Private lands within government
reservations may not be shown. Obtain permission before
entering private lands.

Imagery.....NAIP, September 2013
Roads.....HERE, ©2013
Names.....GNIS, ©2013
Hydrography.....National Hydrography Dataset, 2013
Contours.....National Elevation Dataset, 2005
Boundaries.....Multiple sources; see metadata file 1972 - 2014
Public Land Survey System.....BLM, 2011



U.S. National Grid	
100,000-m Square ID	
100	00
PB	08
PA	0A
Grid Zone Designation	
11S	



CONTOUR INTERVAL 40 FEET
NORTH AMERICAN VERTICAL DATUM OF 1988
This map was produced to conform with the
National Geospatial Program US Topo Product Standard, 2011.
A metadata file associated with this product is draft version 0.6.18



ROAD CLASSIFICATION	
Expressway	Local Connector
Secondary Hwy	Local Road
Ramp	4WD
Interstate Route	US Route
	State Route

1	2	3
4	5	6
7	8	9

ADJOINING QUADRANGLES

KANE SPRINGS VALLEY, NV
2015

