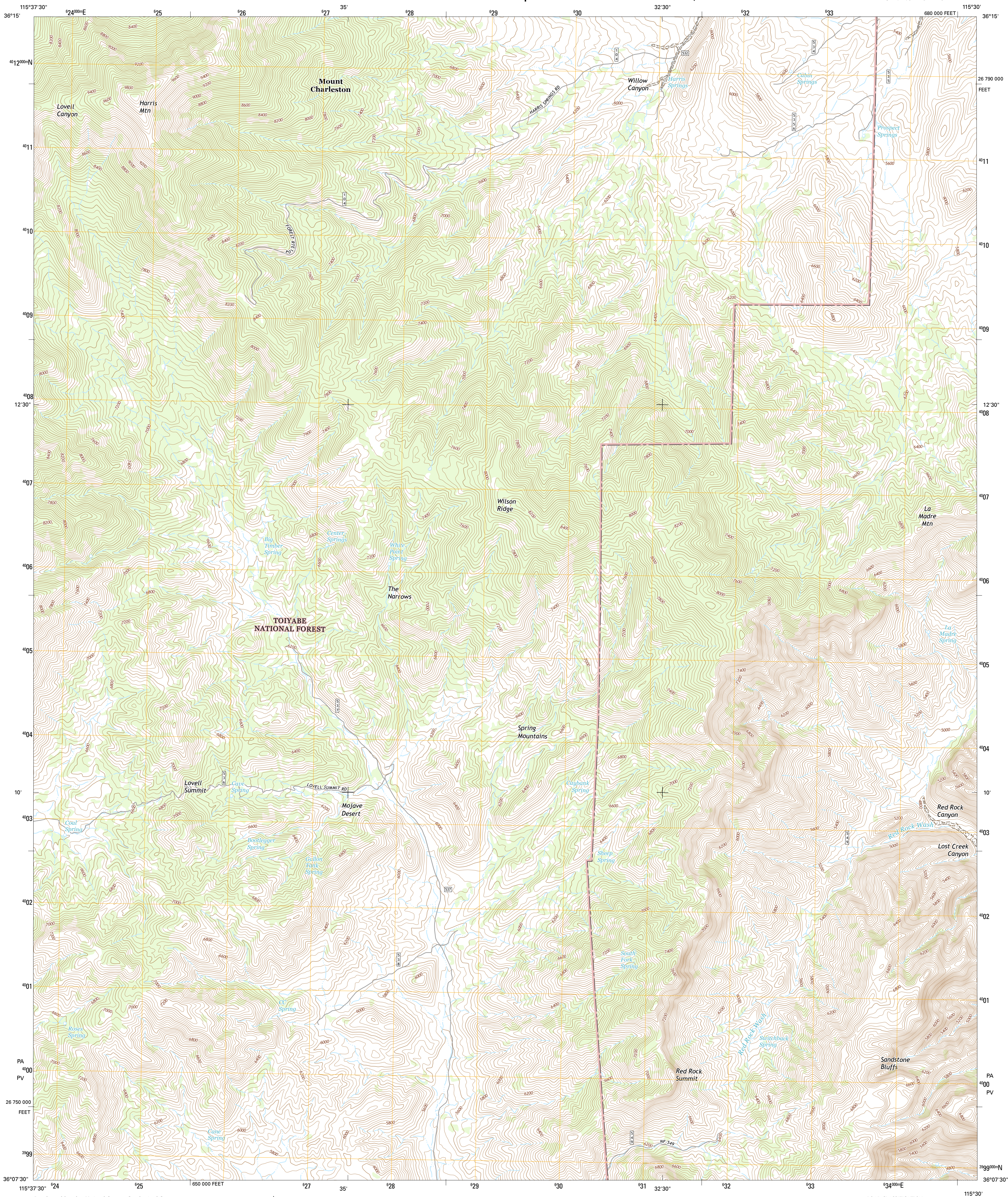




LA MADRE SPRING QUADRANGLE
NEVADA-CLARK CO.
7.5-MINUTE SERIES

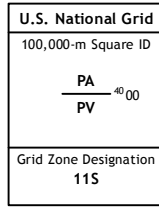
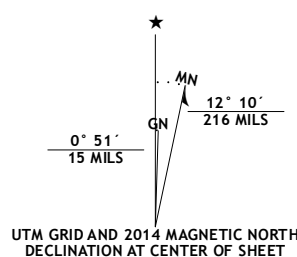


Produced by the United States Geological Survey

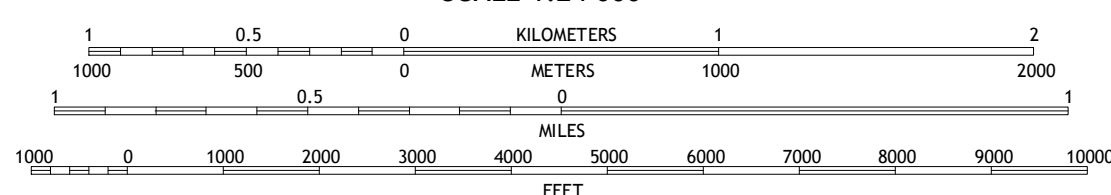
World Geodetic System of 1984 (WGS84). Projection and
1 000-meter grid: Universal Transverse Mercator, Zone 11S
10 000-foot ticks: Nevada Coordinate System of 1983 (east zone)

This map is not a legal document. Boundaries may be generalized for this map scale. Private lands within government reservations may not be shown. Obtain permission before entering private lands.

Imagery.....	NAIP, July	2013
Roads.....	HERE, ©2013	2013
Roads within US Forest Service Lands.....	FSTopo Data	2013
	with limited Forest Service updates,	2013
Names.....	GNIS,	2013
Hydrography.....	National Hydrography Dataset,	2001
Contours.....	National Elevation Dataset,	2003
Boundaries.....	Multiple sources; see metadata file 1972	2014
Public Land Survey System.....	BLM,	2011



SCALE 1:24 000

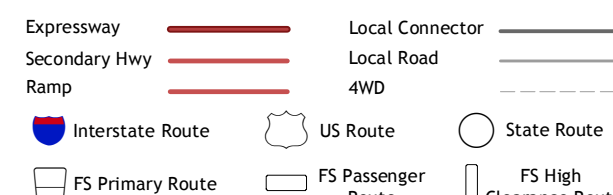


CONTOUR INTERVAL 40 FEET
NORTH AMERICAN VERTICAL DATUM OF 1988

This map was produced to conform with the
National Geospatial Program US Topo Product Standard, 2011.
The data file associated with this product is draft version 0.6.18



ROAD CLASSIFICATION



Check with local Forest Service unit
for current travel conditions and restrictions

LA MADRE SPRING, NV
2014

1	2	3	1 Charleston Peak
4		5	2 Angel Peak
6	7	8	3 Grapevine Spring

ADJOINING QUADRANGLES

- 4 Griffith Peak
- 5 La Madre Mountain
- 6 Lost Cabin Spring
- 7 Mountain Springs
- 8 Blue Diamond