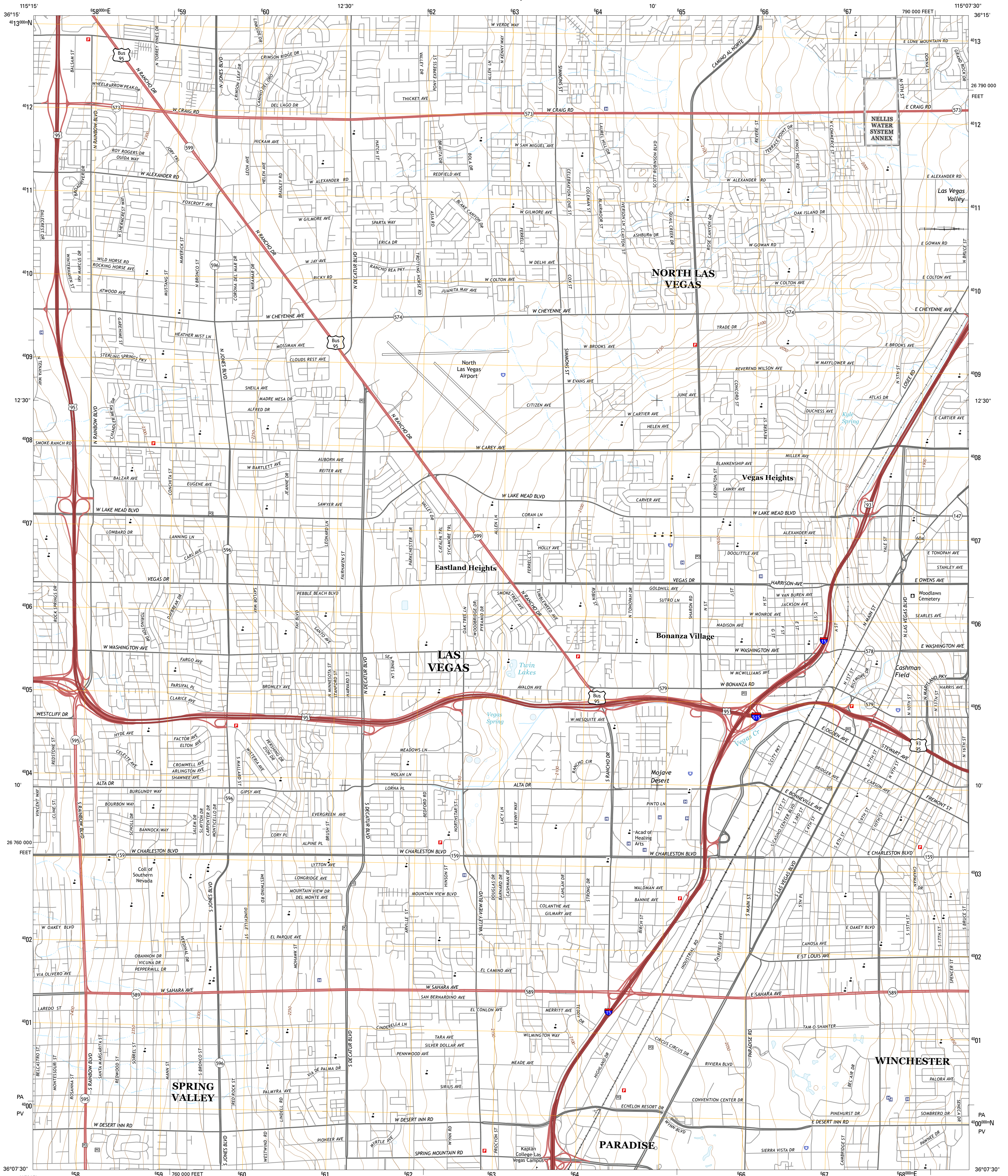




U.S. DEPARTMENT OF THE INTERIOR
U.S. GEOLOGICAL SURVEY



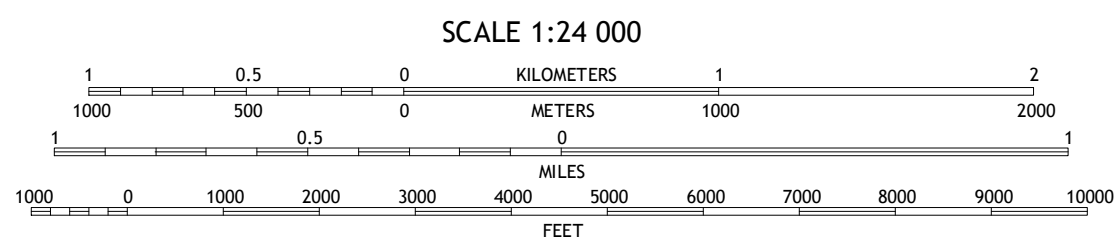
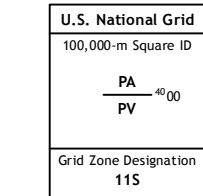
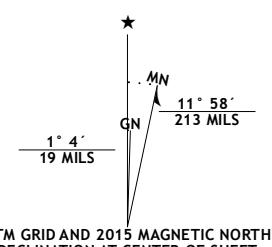
LAS VEGAS NW QUADRANGLE
NEVADA-CLARK CO.
7.5-MINUTE SERIES



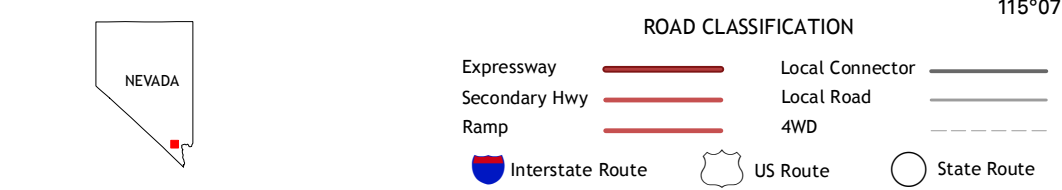
Produced by the United States Geological Survey
North American Datum of 1983 (NAD83)
World Geodetic System of 1984 (WGS84). Projection and
1000-foot ticks: Nevada Coordinate System of 1983 (east zone)

This map is not a legal document. Boundaries may be
generalized for this map scale. Private lands within government
reservations may not be shown. Obtain permission before
entering private lands.

Images:.....NAIP, July 2013
Roads:.....HERE, ©2013
Names:.....GNIS, 2013
Hydrography:.....National Hydrography Dataset, 2013
Contours:.....National Elevation Dataset, 2001
Boundaries:.....Multiple sources; see metadata file 1972-2014
Public Land Survey System:.....BLM, 2011



CONTOUR INTERVAL 10 FEET
NORTH AMERICAN VERTICAL DATUM OF 1988
This map was produced to conform with the
National Geospatial Program US Topo Product Standard, 2011.
A metadata file associated with this product is draft version 0.6.18



1	2	3
4	5	6
7	8	9

1 Tule Springs Lake
2 Gass Peak SW
3 Valley
4 Blue Diamond NE
5 Las Vegas NE
6 Blue Diamond SE
7 Las Vegas SW
8 Las Vegas SE

LAS VEGAS NW, NV
2015

