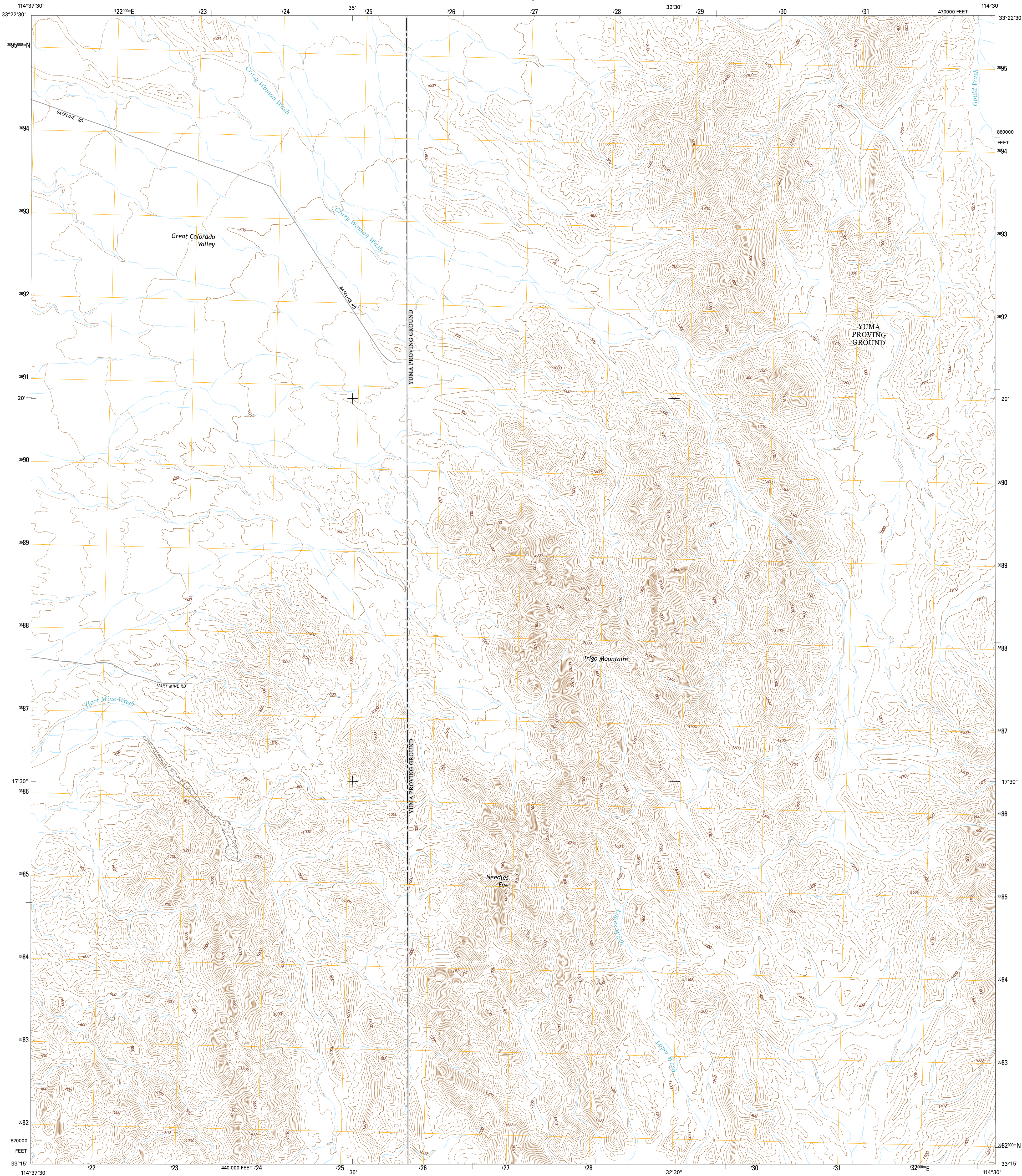




U.S. DEPARTMENT OF THE INTERIOR  
U.S. GEOLOGICAL SURVEY



CIBOLA SE QUADRANGLE  
ARIZONA-LA PAZ CO.  
7.5-MINUTE SERIES



Produced by the United States Geological Survey  
North American Datum of 1983 (NAD83)  
World Geodetic System of 1984 (WGS84). Projection and  
1 000-meter grid: Universal Transverse Mercator, Zone 11S  
10 000-foot ticks: Arizona Coordinate System of 1983 (west  
zone)

This map is not a legal document. Boundaries may be  
generalized for this map scale. Private lands within government  
reservations may not be shown. Obtain permission before  
entering private lands.

Imagery.....NAIP, June 2013  
Roads.....HERE, ©2013  
Names.....GNIS, 2013  
Hydrography.....National Hydrography Dataset, 2013  
Contours.....National Elevation Dataset, 2002  
Boundaries.....Multiple sources; see metadata file 1972 - 2014  
Public Land Survey System.....BLM, 2011

UTM GRID AND 2014 MAGNETIC NORTH  
DECLINATION AT CENTER OF SHEET

U.S. National Grid  
100,000-m Square ID  
QS  
Grid Zone Designation  
11S

SCALE 1:24 000

1 000 500 0 500 1000 2000  
KILOMETERS  
1 000 500 0 500 1000 2000  
METERS  
1 000 2000 3000 4000 5000 6000 7000 8000 9000 10000  
MILES  
FEET

CONTOUR INTERVAL 40 FEET  
NORTH AMERICAN VERTICAL DATUM OF 1988

This map was produced to conform with the  
National Geospatial Program US Topo Product Standard, 2011.  
A metadata file associated with this product is draft version 0.6.16



ROAD CLASSIFICATION

Expressway  
Secondary Hwy  
Ramp  
Interstate Route  
US Route  
Local Connector  
Local Road  
4WD  
State Route

ADJOINING QUADRANGLES

1	2	3
4	5	6
7	8	9

1 Palo Verde  
2 Mule Wash  
3 North Trigo Peaks  
4 Cibola  
5 Mohave Peak  
6 Picacho NW  
7 Hidden Valley  
8 Red Hill

CIBOLA SE, AZ  
2014

