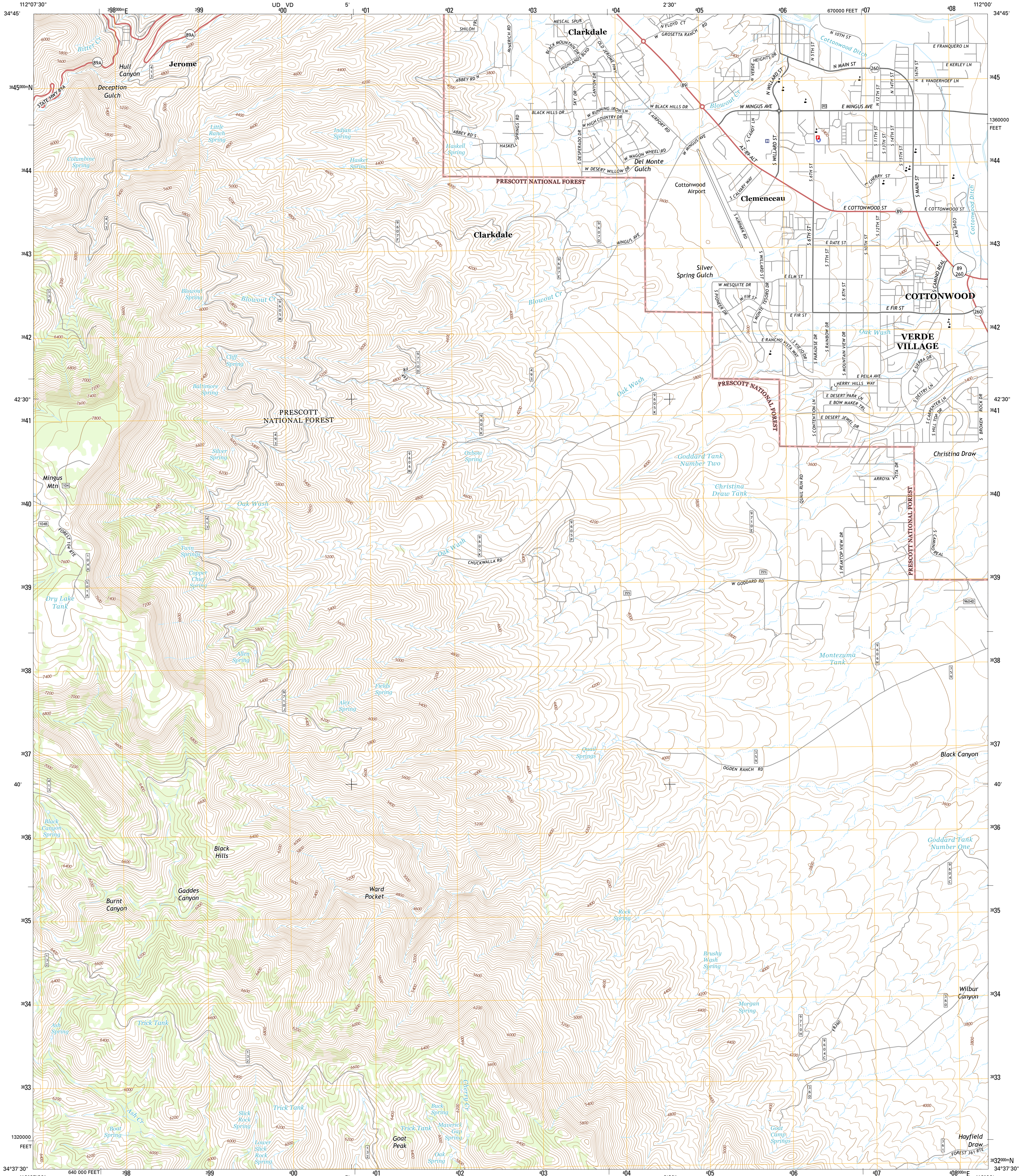




U.S. DEPARTMENT OF THE INTERIOR  
U.S. GEOLOGICAL SURVEY



COTTONWOOD QUADRANGLE  
ARIZONA-YAVAPAI CO.  
7.5-MINUTE SERIES

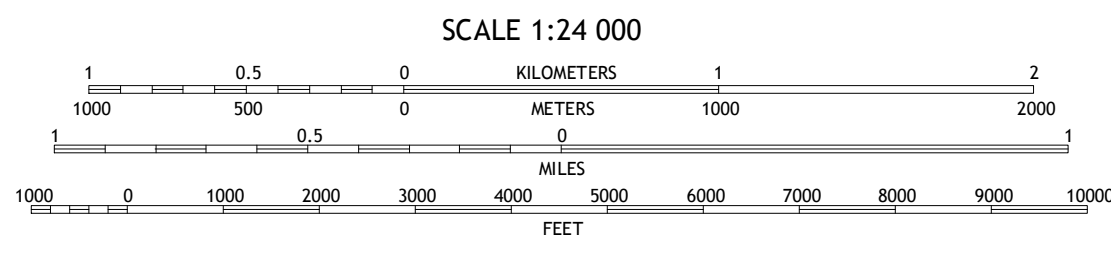
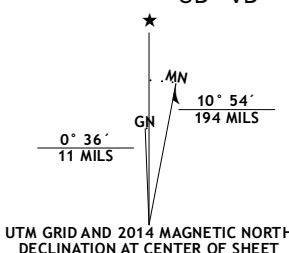


Produced by the United States Geological Survey

North American Datum of 1983 (NAD83)  
World Geodetic System of 1984 (WGS84) Projection and  
1 000-meter grid: Universal Transverse Mercator, Zone 12S  
10 000-foot ticks: Arizona Coordinate System of 1983 (central zone)

This map is not a legal document. Boundaries may be generalized for this map scale. Private lands within government reservations may not be shown. Obtain permission before entering private lands.

Imagery.....NAIP, June 2013  
Roads within US Forest Service Lands.....HERE, ©2013  
Roads.....FS Topo Data with limited Forest Service updates, 2013  
Names.....GNIS, 2013  
Hydrography.....National Hydrography Dataset, 2013  
Contours.....National Elevation Dataset, 2001  
Boundaries.....Multiple sources; see metadata file 1972-2014  
Public Land Survey System.....BLM, 2011



CONTOUR INTERVAL 40 FEET  
NORTH AMERICAN VERTICAL DATUM OF 1988

This map was produced to conform with the  
National Geospatial Program US Topo Product Standard, 2011.  
A metadata file associated with this product is draft version 0.6.16



1	2	3
4	5	6
7	8	9

ADJOINING QUADRANGLES

- 1 Munds Draw
- 2 Clarkdale
- 3 Page Springs
- 4 Hickey Mountain
- 5 Cornville
- 6 Humboldt
- 7 Cherry
- 8 Middle Verde

- ROAD CLASSIFICATION
- Expressway
  - Secondary Hwy
  - Ramp
  - Interstate Route
  - FS Primary Route
  - Local Connector
  - Local Road
  - 4WD
  - US Route
  - FS Passenger Route
  - State Route
  - FS High Clearance Route

Check with local Forest Service unit for current travel conditions and restrictions.

COTTONWOOD, AZ  
2014

