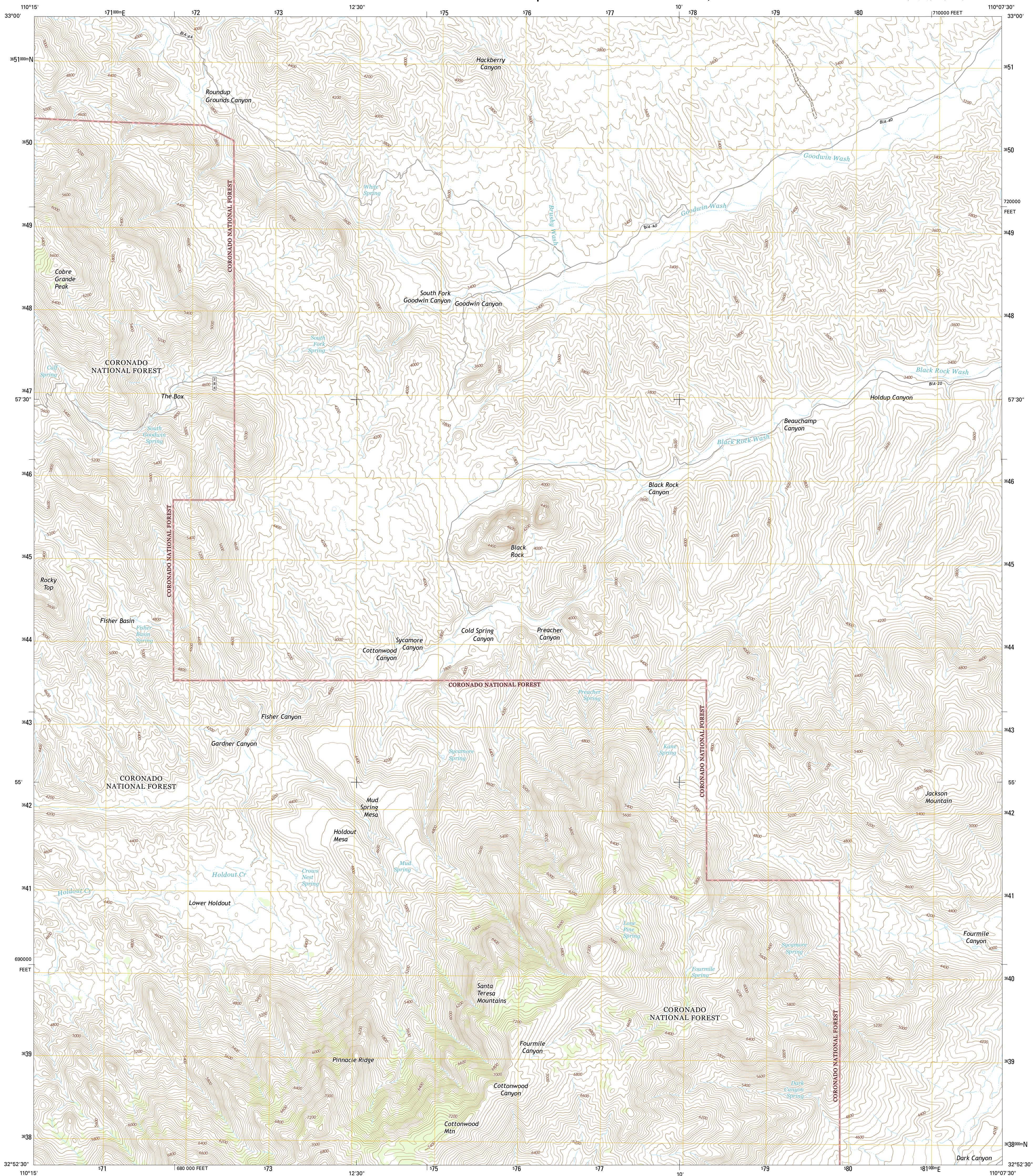




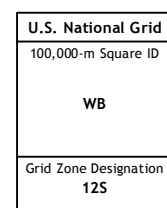
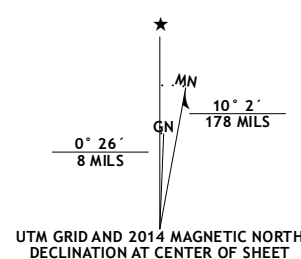
JACKSON MOUNTAIN QUADRANGLE
ARIZONA-GRAHAM CO.
7.5-MINUTE SERIES



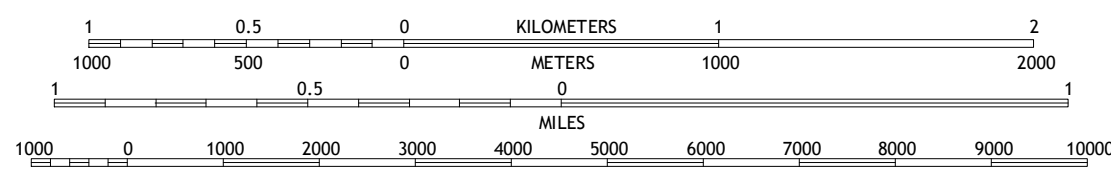
Produced by the United States Geological Survey
North American Datum of 1983 (NAD83)
World Geodetic System of 1984 (WGS84). Projection and
1 000-meter grid: Universal Transverse Mercator, Zone 12S
10 000-foot ticks: Arizona Coordinate System of 1983 (east zone)

This map is not a legal document. Boundaries may be
generalized for this map scale. Private lands within government
reservations may not be shown. Obtain permission before
entering private lands.

Imagery.....	NAIP, June 2013
Roads.....	HERE, ©2013
Roads within US Forest Service Lands.....	FSTopo Data
	with limited Forest Service updates, 2013
Names.....	GNIS, 2013
Hydrography.....	National Hydrography Dataset, 2013
Contours.....	National Elevation Dataset, 2002
Boundaries.....	Multiple sources; see metadata file 1972 - 2014
Public Land Survey System.....	BLM, 1974



SCALE 1:24 000

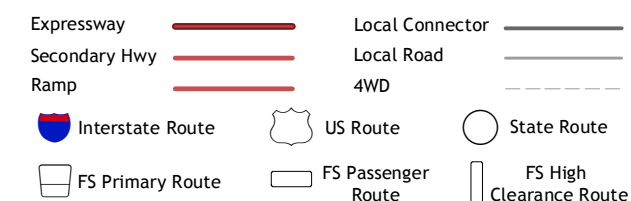


CONTOUR INTERVAL 40 FEET
NORTH AMERICAN VERTICAL DATUM OF 1988

This map was produced to conform with the
National Geospatial Program US Topo Product Standard
The data file associated with this product is draft version



ROAD CLASSIFICATION



Check with local Forest Service unit
for current travel conditions and restrictions.

1	2	3
4		5
6	7	8

- 1 Mount Turnbull
- 2 Beargrass Basin
- 3 Geronimo
- 4 Coble Grande M
- 5 Telegraph Wash
- 6 Klondyke
- 7 Buford Hill
- 8 Tripp Canyon

ADJOINING QUADRANGLES

- 1 Mount Turnbull
- 2 Beargrass Basin
- 3 Geronimo
- 4 Cobre Grande M
- 5 Telegraph Wash
- 6 Klondyke
- 7 Buford Hill
- 8 Tripp Canyon

JACKSON MOUNTAIN, AZ
2014

