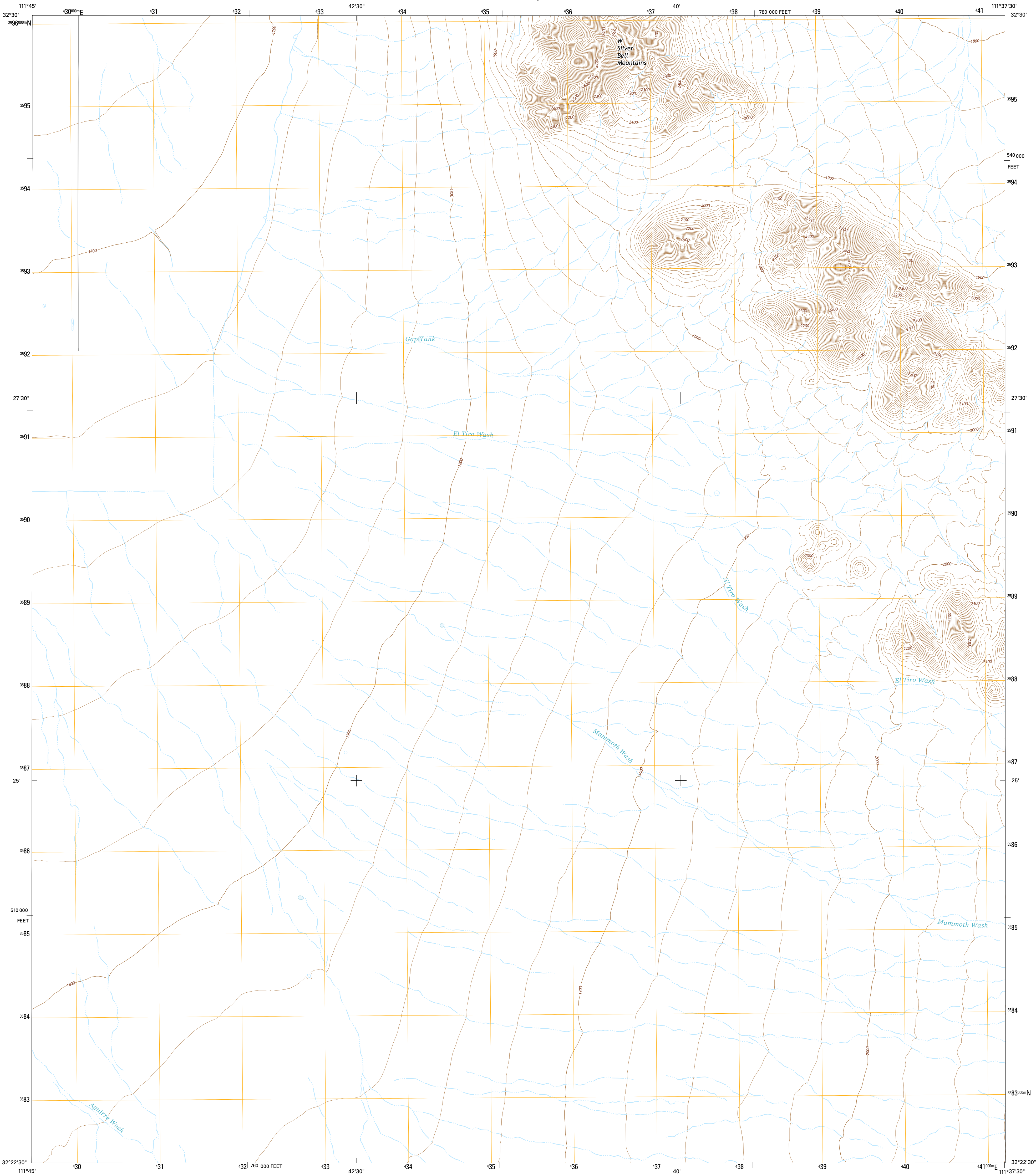




U.S. DEPARTMENT OF THE INTERIOR
U.S. GEOLOGICAL SURVEY



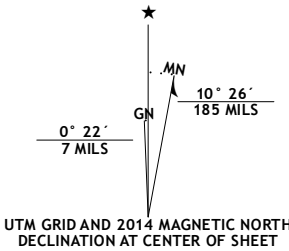
GAP TANK QUADRANGLE
ARIZONA-PIMA CO.
7.5-MINUTE SERIES



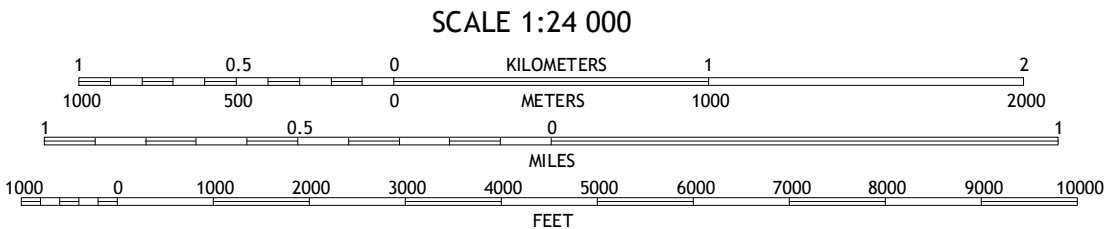
Produced by the United States Geological Survey
North American Datum of 1983 (NAD83)
World Geodetic System of 1984 (WGS84). Projection and
1 000-meter grid: Universal Transverse Mercator, Zone 12S
10 000-foot ticks: Arizona Coordinate System of 1983 (central
zone)

This map is not a legal document. Boundaries may be
generalized for this map scale. Private lands within government
reservations may not be shown. Obtain permission before
entering private lands.

Imagery.....NAIP, June 2013
Roads.....HERE, ©2013
Names.....GNIS, 2013
Hydrography.....National Hydrography Dataset, 2013
Contours.....National Elevation Dataset, 2002
Boundaries.....Multiple sources; see metadata file 1972-2014
Public Land Survey System.....BLM, 2011



| |
|-----------------------|
| U.S. National Grid |
| 100,000-m Square ID |
| VA |
| Grid Zone Designation |
| 12S |



CONTOUR INTERVAL 20 FEET
NORTH AMERICAN VERTICAL DATUM OF 1988
This map was produced to conform with the
National Geospatial Program US Topo Product Standard, 2011.
A metadata file associated with this product is draft version 0.6.16



| | | | |
|----|----|----|----------------------------|
| 1 | 2 | 3 | 1 Silver Reef Mountains SE |
| 4 | 5 | 6 | 2 Greene Reservoir |
| 7 | 8 | 9 | 3 Friendly Corners |
| 10 | 11 | 12 | 4 Santa Rosa Mountains NE |
| 13 | 14 | 15 | 5 Silver Bell West |
| 16 | 17 | 18 | 6 Santa Rosa Mountains SE |
| 19 | 20 | 21 | 7 Queens Well |
| 22 | 23 | 24 | 8 Koht Kohl Hill |

| ROAD CLASSIFICATION | |
|---------------------|-----------------|
| Expressway | Local Connector |
| Secondary Hwy | Local Road |
| Ramp | 4WD |
| Interstate Route | US Route |
| | State Route |

GAP TANK, AZ
2014

