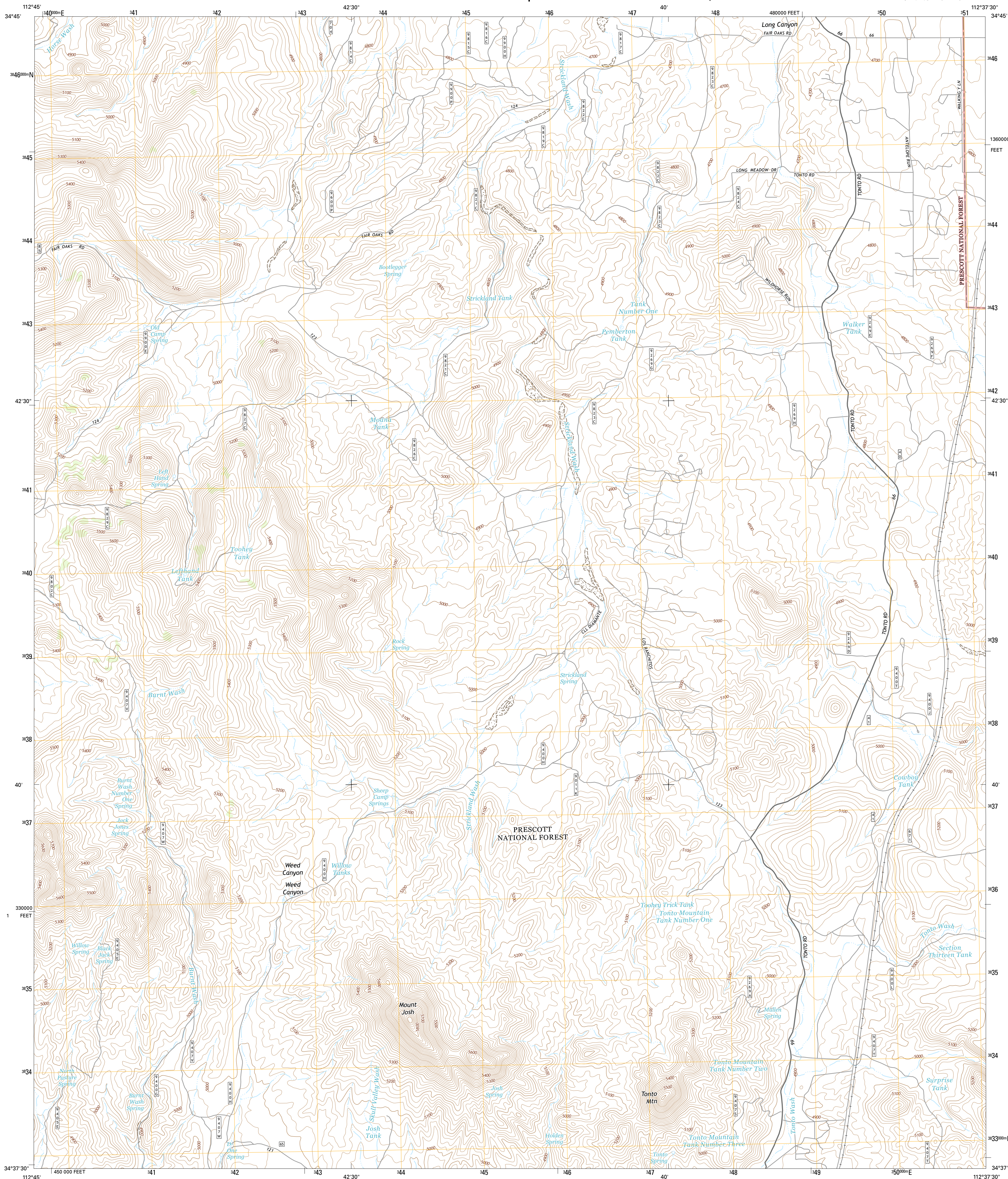




**MOUNT JOSH QUADRANGLE**  
**ARIZONA-YAVAPAI CO.**  
**7.5-MINUTE SERIES**

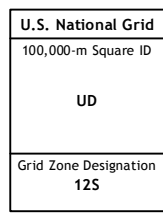
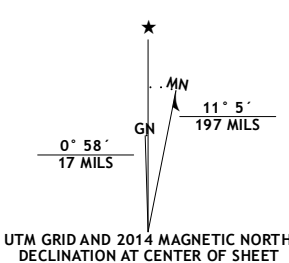


Produced by the United States Geological Survey

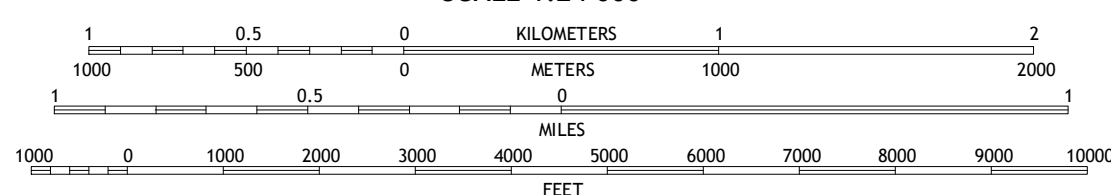
World Geodetic System of 1984 (WGS84). Projection and 1 000-meter grid: Universal Transverse Mercator, Zone 12S. 10 000-foot ticks: Arizona Coordinate System of 1983 (central zone).

This map is not a legal document. Boundaries may be generalized for this map scale. Private lands within government reservations may not be shown. Obtain permission before entering private lands.

Imagery.....	NAIP, June 2013	
Roads.....	HERE, ©2013	
Roads within US Forest Service Lands.....	FSTPO Data	
	with limited Forest Service updates,	2013
Names.....	GNIS, 2013	
Hydrography.....	National Hydrography Dataset, 2013	
Contours.....	National Elevation Dataset, 2002	
Boundaries.....	Multiple sources; see metadata file 1972	2011
Public Land Survey System.....	BLM, 2014	



SCALE 1:24 000



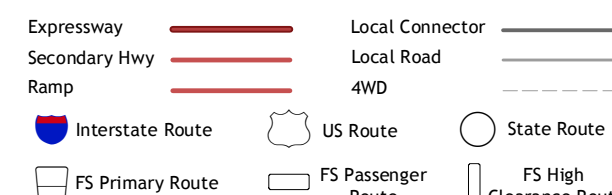
CONTOUR INTERVAL 20 FEET  
NORTH AMERICAN VERTICAL DATUM OF 1988

This map was produced to conform with the  
National Geospatial Program US Topo Product Standard, 2011.  
A metadata file associated with this product is draft version 0.6.16



QUADRANGLE LOCATION

## ROAD CLASSIFICATION



Check with local Forest Service unit  
for current travel conditions and restrictions.

1	2	3
4		5
6	7	8

ADJOINING QUADRANGLES

- 1 Seepage Mountain
- 2 Simmons
- 3 Sullivan Buttes
- 4 Smith Mesa
- 5 Jerome Canyon
- 6 Martin Mountain
- 7 Skull Valley
- 8 Iron Springs

ADJOINING QUADRANGLES

MOUNT JOSH, AZ  
2014