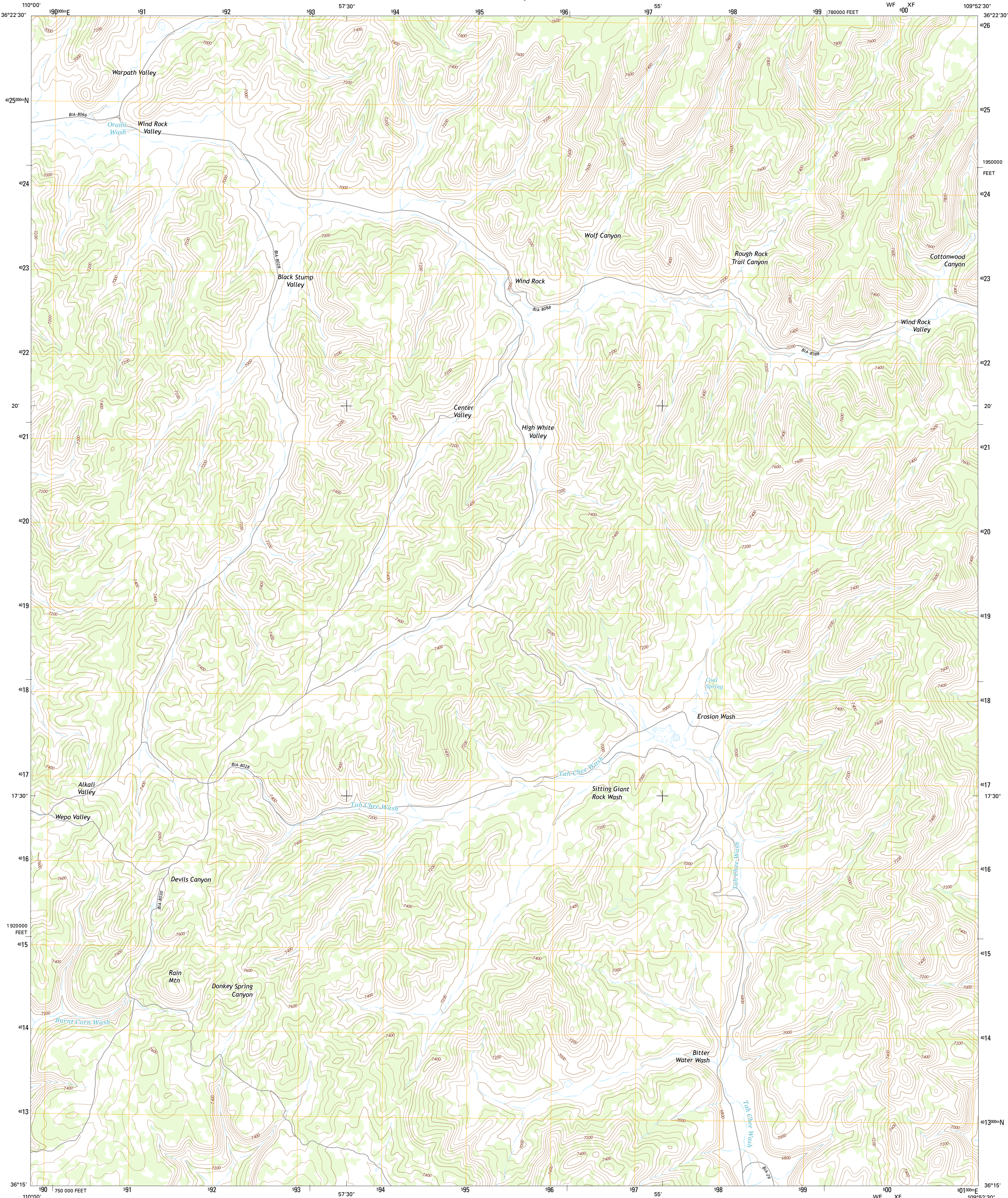




U.S. DEPARTMENT OF THE INTERIOR
U.S. GEOLOGICAL SURVEY



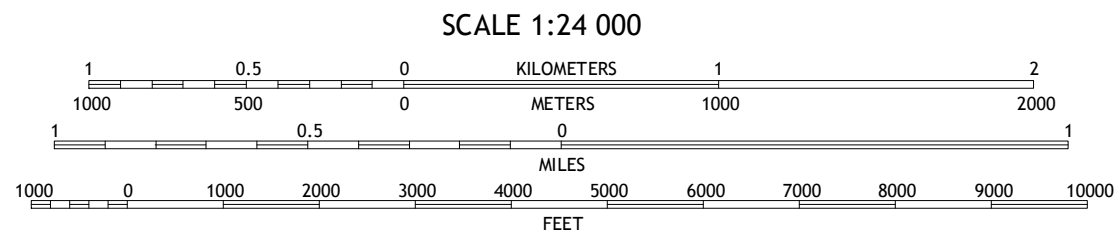
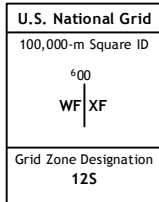
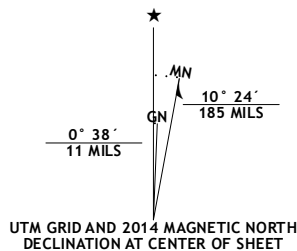
TAH CHEE WASH QUADRANGLE
ARIZONA-APACHE CO.
7.5-MINUTE SERIES
WF XF



Produced by the United States Geological Survey
North American Datum of 1983 (NAD83)
World Geodetic System of 1984 (WGS84). Projection and
1000-meter grid: Universal Transverse Mercator, Zone 12S
10 000-foot ticks: Arizona Coordinate System of 1983 (east zone)

This map is not a legal document. Boundaries may be
generalized for this map scale. Private lands within government
reservations may not be shown. Obtain permission before
entering private lands.

Imagery.....NAIP, June 2013
Roads.....HERE, ©2013
Names.....GNIS, 2013
Hydrography.....National Hydrography Dataset, 2013
Contours.....National Elevation Dataset, 1999
Boundaries.....Multiple sources; see metadata file 1972 - 2014
Public Land Survey System.....BLM, 2011



CONTOUR INTERVAL 40 FEET
NORTH AMERICAN VERTICAL DATUM OF 1988
This map was produced to conform with the
National Geospatial Program US Topo Product Standard, 2011.
A metadata file associated with this product is draft version 0.6.16



1	2	3
4	5	6
7	8	9

ADJOINING QUADRANGLES

1 Chilchinbito Canyon
2 Rough Rock NW
3 Rough Rock
4 Hole In Rock Valley
5 Sweathouse Peak
6 Burnt Corn Spring
7 Blue Gap
8 Lohali Point

WF XF		ROAD CLASSIFICATION	
Expressway	Local Connector	Expressway	Local Connector
Secondary Hwy	Local Road	Secondary Hwy	Local Road
Ramp	4WD	Ramp	4WD
Interstate Route	US Route	Interstate Route	US Route
	State Route		State Route

TAH CHEE WASH, AZ
2014

