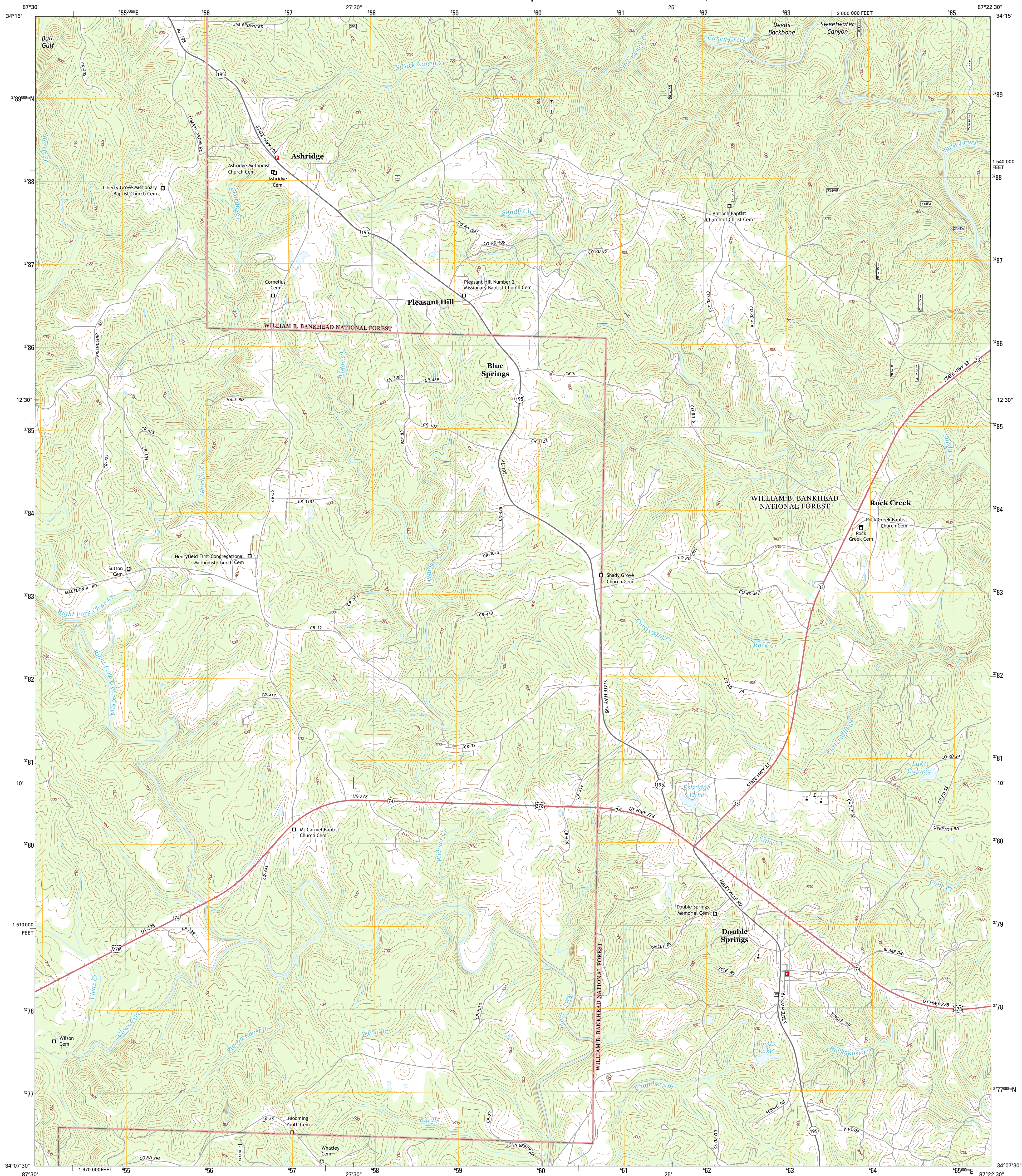




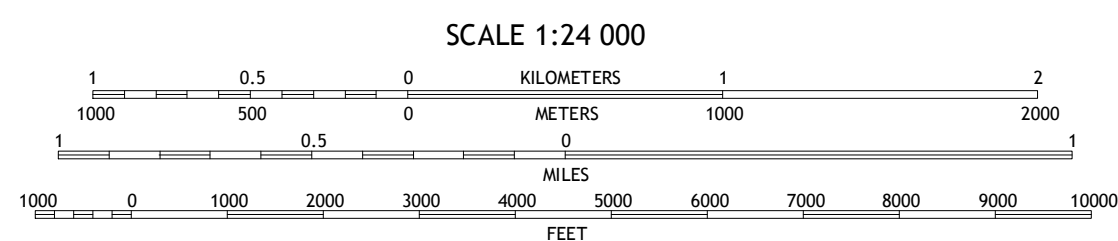
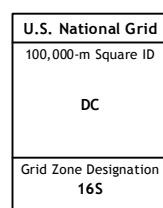
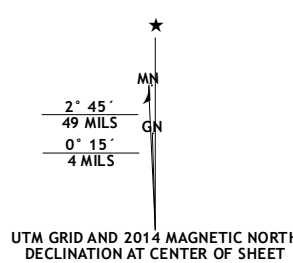
DOUBLE SPRINGS QUADRANGLE
ALABAMA-WINSTON CO.
7.5-MINUTE SERIES



World American Datum of 1983 (NAD83).
World Geodetic System of 1984 (WGS84). Projection and
1 000-meter grid: Universal Transverse Mercator, Zone 16S
10 000-foot ticks: Alabama Coordinate System of 1983 (west
zone)

This map is not a legal document. Boundaries may be generalized for this map scale. Private lands within government reservations may not be shown. Obtain permission before entering private lands.

Imagery.....	NALP,	December	2013
Roads.....	HERE,	©2013	
Roads within US Forest Service Lands.....	FTopo	Data	
	with limited Forest Service updates,	2013	
Names.....	GNIS,	2013	
Hydrography.....	National Hydrography Dataset,	2013	
Contours.....	National Elevation Dataset,	2013	
Boundaries.....	Multiple sources; see metadata file	1972 - 2003	



CONTOUR INTERVAL 20 FEET
NORTH AMERICAN VERTICAL DATUM OF 1988

This map was produced to conform with the
National Geospatial Program US Topo Product Standard, 2011.
A metadata file associated with this product is draft version 0.6.16



QUADRANGLE LOCATION

1	2	3	1 Kintock Spring
4		5	2 Bee Branch
6	7	8	3 Grayson

ADJOINING QUADRANGLES

- 4 Haleyville East
- 5 Houston
- 6 Lynn
- 7 Poplar Springs
- 8 Black Pond

ROAD CLASSIFICATION

<p>Expressway </p> <p>Secondary Hwy </p> <p>Ramp </p> <p> Interstate Route</p> <p> FS Primary Route</p>	<p>Local Connector </p> <p>Local Road </p> <p>4WD </p> <p> US Route</p> <p> FS Passenger Route</p> <p> FS High Clearance Route</p>
<p> State Route</p>	

Check with local Forest Service unit
for current travel conditions and restrictions.

DOUBLE SPRINGS, AL
2014

