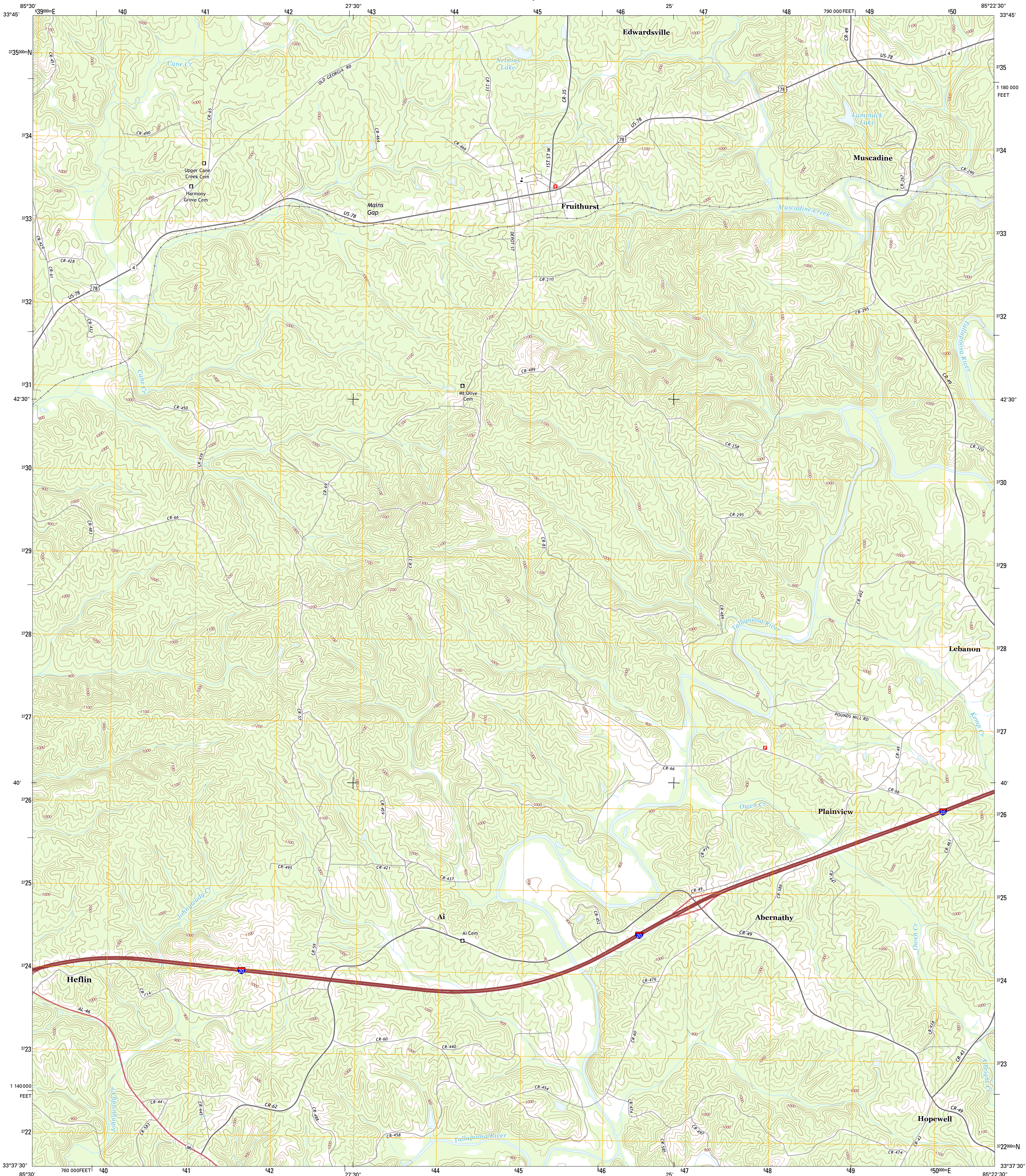




U.S. DEPARTMENT OF THE INTERIOR
U.S. GEOLOGICAL SURVEY



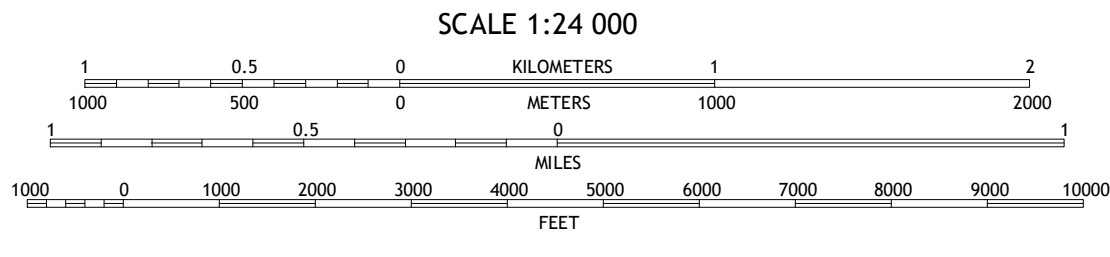
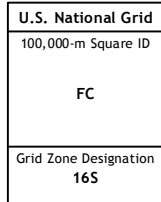
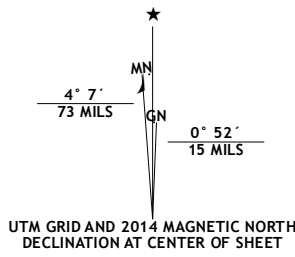
FRUITHURST QUADRANGLE
ALABAMA-CLEBURNE CO.
7.5-MINUTE SERIES



Produced by the United States Geological Survey
North American Datum of 1983 (NAD83)
World Geodetic System of 1984 (WGS84) - Projection and
1 000-meter grid: Universal Transverse Mercator, Zone 16S
10 000-foot ticks: Alabama Coordinate System of 1983 (east
zone)

This map is not a legal document. Boundaries may be
generalized for this map scale. Private lands within government
reservations may not be shown. Obtain permission before
entering private lands.

Imagery.....NAIP, December 2013
Roads.....HERE, ©2013
Names.....GNIS, 2013
Hydrography.....National Hydrography Dataset, 2013
Contours.....National Elevation Dataset, 2009
Boundaries.....Multiple sources; see metadata file 1972 - 2013



CONTOUR INTERVAL 20 FEET
NORTH AMERICAN VERTICAL DATUM OF 1988
This map was produced to conform with the
National Geospatial Program US Topo Product Standard, 2011.
A metadata file associated with this product is draft version 0.6.16



QUADRANGLE LOCATION

ROAD CLASSIFICATION	
Expressway	Local Connector
Secondary Hwy	Local Road
Ramp	4WD
Interstate Route	US Route
	State Route

1	2	3
4	5	6
7	8	9

1 Piedmont SE
2 Oak Level
3 Tallapoosa North
4 Heflin
5 Tallapoosa South
6 Ross Mountain
7 Hightower
8 Bowdon West

FRUITHURST, AL
2014

