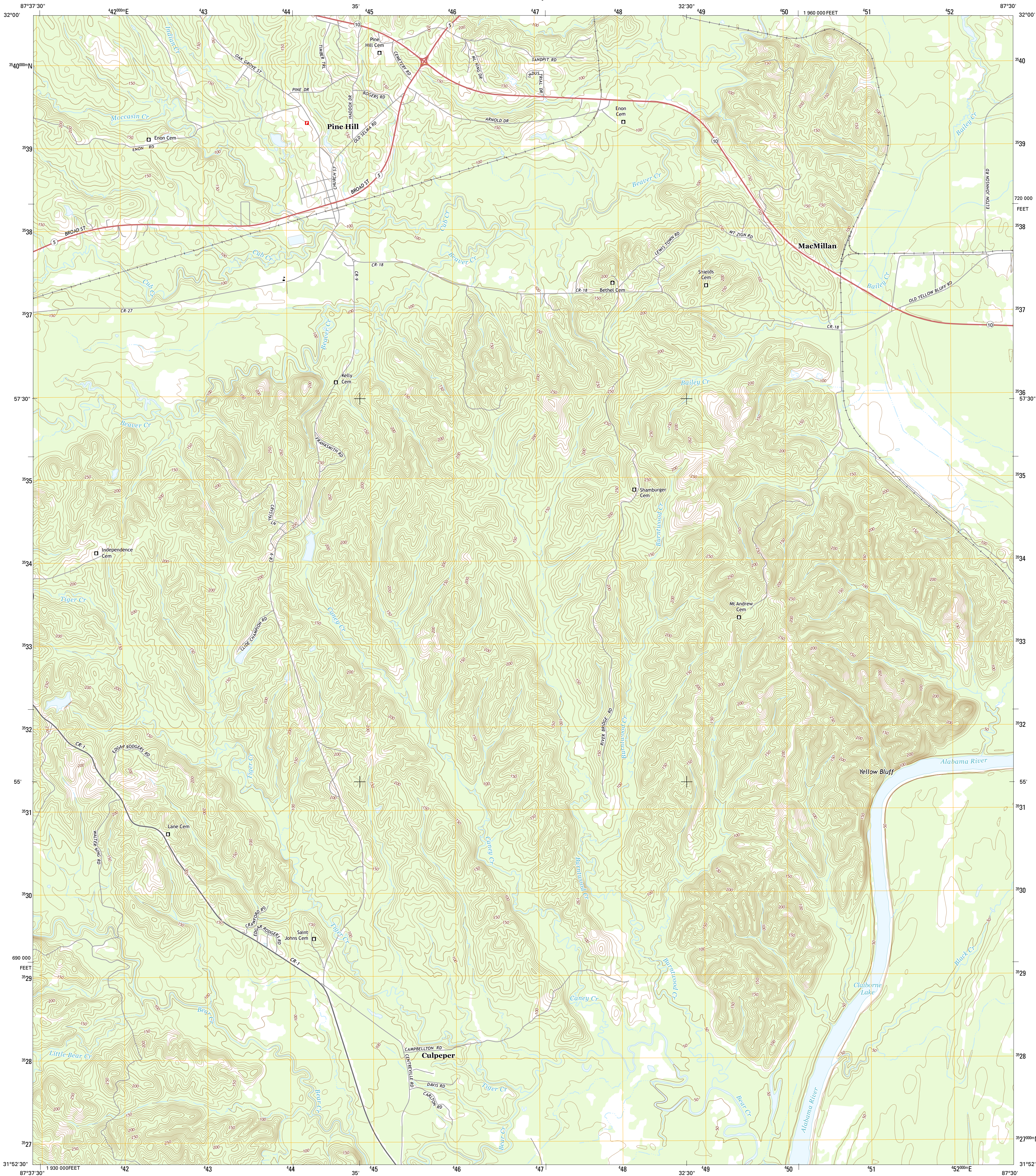




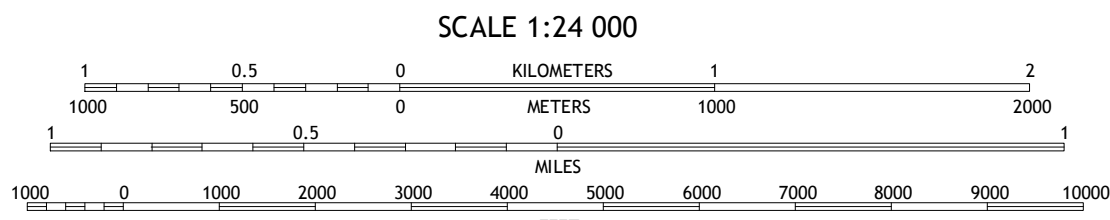
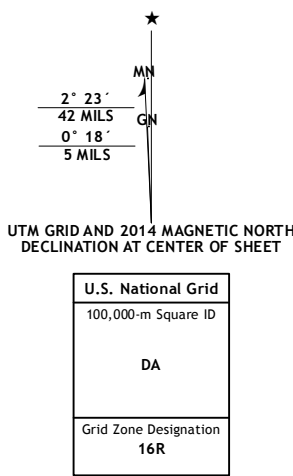
U.S. DEPARTMENT OF THE INTERIOR  
U.S. GEOLOGICAL SURVEY



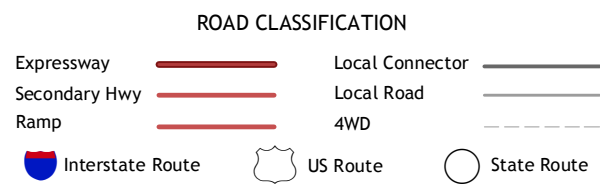
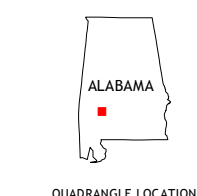
PINE HILL QUADRANGLE  
ALABAMA-WILCOX CO.  
7.5-MINUTE SERIES



Produced by the United States Geological Survey  
North American Datum of 1983 (NAD83)  
World Geodetic System of 1984 (WGS84)  
10 000-foot ticks: Alabama Coordinate System of 1983 (west zone)  
This map is not a legal document. Boundaries may be generalized for this map scale. Private lands within government reservations may not be shown. Obtain permission before entering private lands.  
Imagery.....NAIP, December 2013  
Roads.....HERE, ©2013  
Names.....GNIS, 2013  
Hydrography.....National Hydrography Dataset, 2013  
Contours.....National Elevation Dataset, 2008  
Boundaries.....Multiple sources; see metadata file 1972 - 2013



CONTOUR INTERVAL 10 FEET  
NORTH AMERICAN VERTICAL DATUM OF 1988  
This map was produced to conform with the National Geospatial Program US Topo Product Standard, 2011.  
A metadata file associated with this product is draft version 0.6.16



1	2	3	1 Surginer
4	5	6	2 Kimbrough
7	8	9	3 Lee Lang Bridge
10	11	12	4 Thomasville
13	14	15	5 Coy
16	17	18	6 Fulton East
19	20	21	7 Lower Peach Tree
22	23	24	8 Hybart

PINE HILL, AL  
2014

