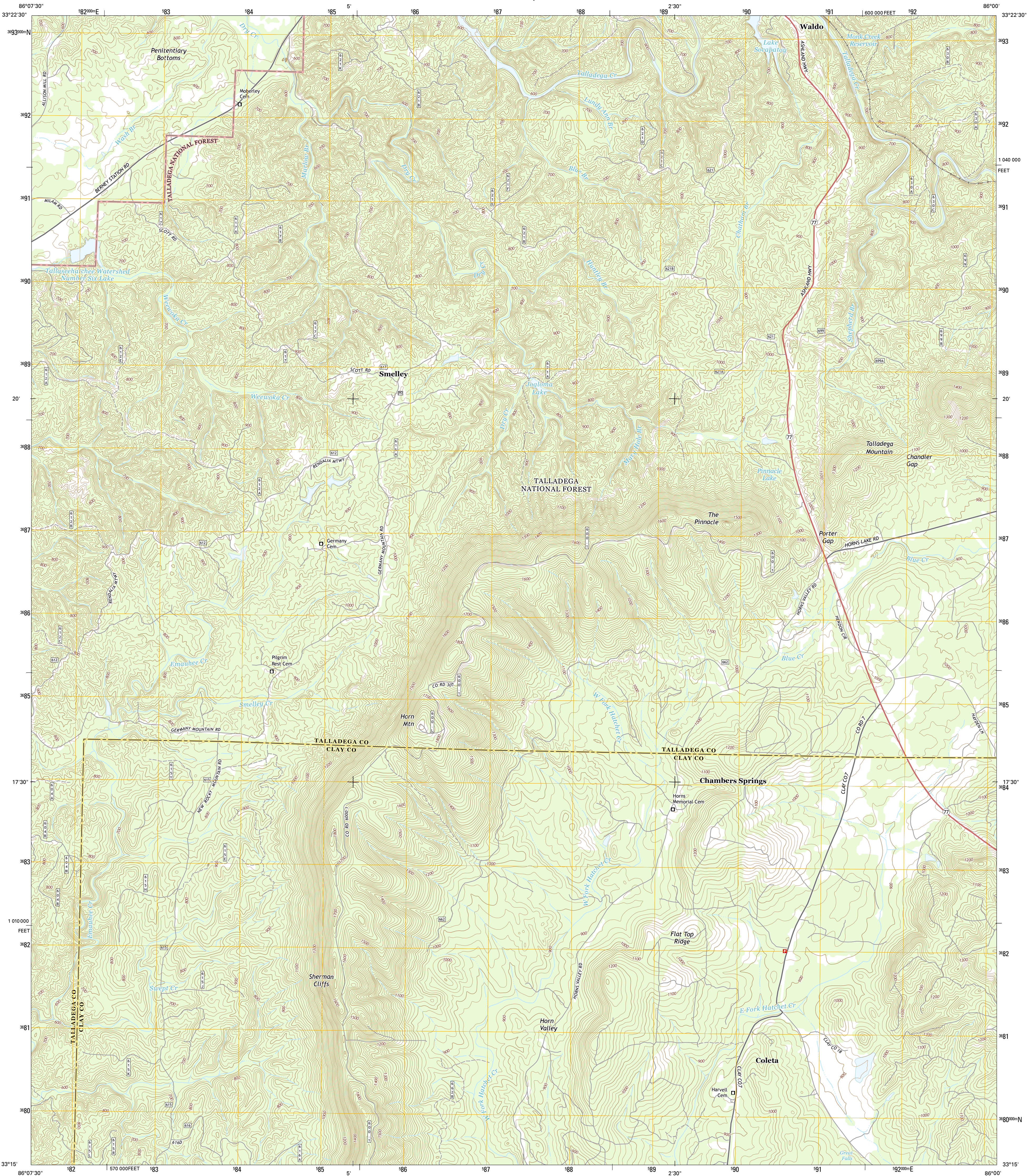




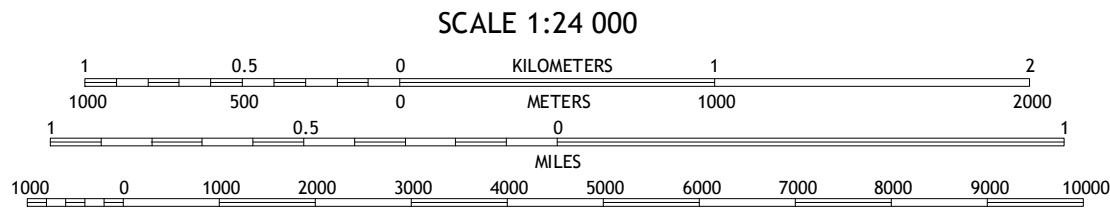
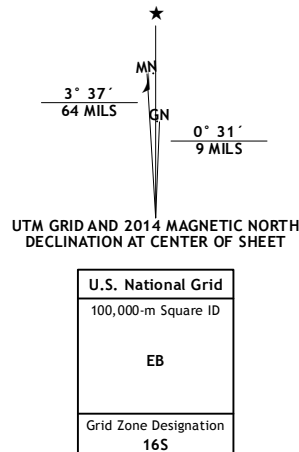
U.S. DEPARTMENT OF THE INTERIOR  
U.S. GEOLOGICAL SURVEY



PORTER GAP QUADRANGLE  
ALABAMA  
7.5-MINUTE SERIES



**Produced by the United States Geological Survey**  
North American Datum of 1983 (NAD83)  
World Geodetic System of 1984 (WGS84). Projection and  
1000-meter grid: Universal Transverse Mercator, Zone 16S  
10 000-foot ticks: Alabama Coordinate System of 1983 (east  
zone)  
This map is not a legal document. Boundaries may be  
generalized for this map scale. Private lands within government  
reservations may not be shown. Obtain permission before  
entering private lands.  
Imagery.....NAIP, December 2013  
Roads.....HERE, ©2013  
Roads within US Forest Service Lands.....FS Topo Data  
with limited Forest Service updates, 2013  
Names.....GNIS, 2013  
Hydrography.....National Hydrography Dataset, 2013  
Contours.....National Elevation Dataset, 2013  
Boundaries.....Multiple sources; see metadata file 1972 - 2013



CONTOUR INTERVAL 20 FEET  
NORTH AMERICAN VERTICAL DATUM OF 1988  
This map was produced to conform with the  
National Geospatial Program US Topo Product Standard, 2011.  
A metadata file associated with this product is draft version 0.6.16



**ROAD CLASSIFICATION**  
Expressway  
Secondary Hwy  
Ramp  
Interstate Route  
FS Primary Route  
Local Connector  
Local Road  
4WD  
US Route  
US Passenger Route  
State Route  
FS High Clearance Route  
Check with local Forest Service unit  
for current travel conditions and restrictions.

1	2	3
4	5	6
7	8	9

1 Sleeping Giant  
2 Talladega  
3 Ironston  
4 Winterboro  
5 Clairmont Springs  
6 Sylacauga East  
7 Bulls Gap  
8 Millerville

ADJOINING QUADRANGLES

PORTER GAP, AL  
2014

