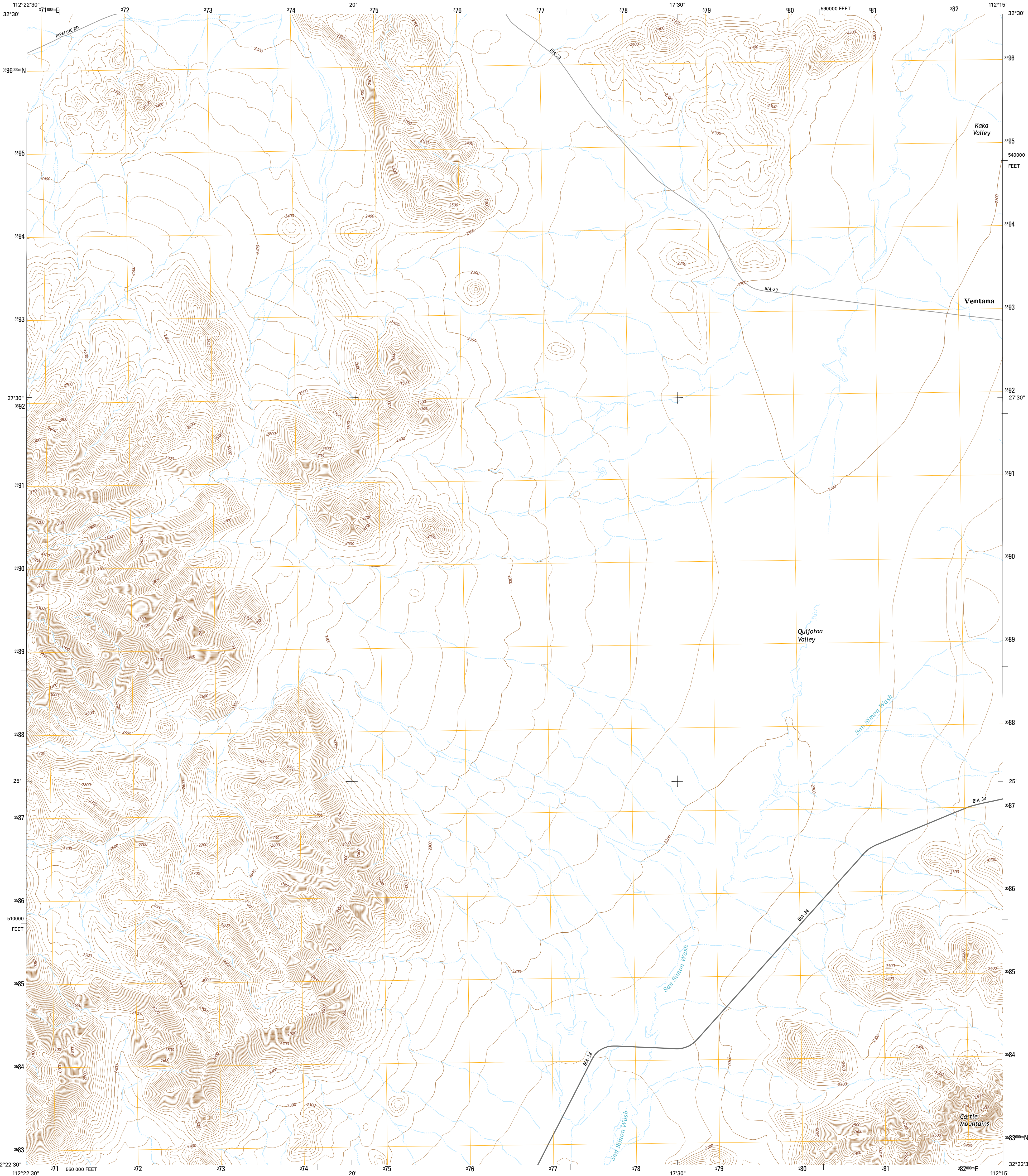




U.S. DEPARTMENT OF THE INTERIOR  
U.S. GEOLOGICAL SURVEY



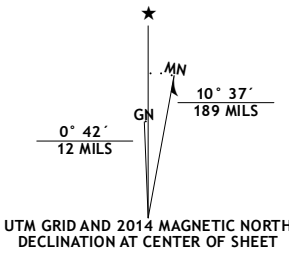
WEST OF VENTANA QUADRANGLE  
ARIZONA-PIMA CO.  
7.5-MINUTE SERIES



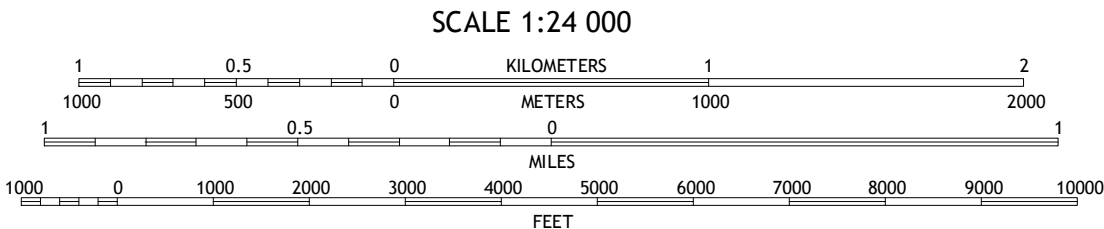
Produced by the United States Geological Survey  
North American Datum of 1983 (NAD83)  
World Geodetic System of 1984 (WGS84). Projection and  
1 000-meter grid: Universal Transverse Mercator, Zone 12S  
10 000-foot ticks: Arizona Coordinate System of 1983 (central  
zone)

This map is not a legal document. Boundaries may be  
generalized for this map scale. Private lands within government  
reservations may not be shown. Obtain permission before  
entering private lands.

Imagery.....NAIP, June 2013  
Roads.....HERE, ©2013  
Names.....GNIS, 2013  
Hydrography.....National Hydrography Dataset, 2013  
Contours.....National Elevation Dataset, 2003  
Boundaries.....Multiple sources; see metadata file 1972-2014  
Public Land Survey System.....BLM, 2011



U.S. National Grid
100,000 m Square ID
UA
Grid Zone Designation
12S

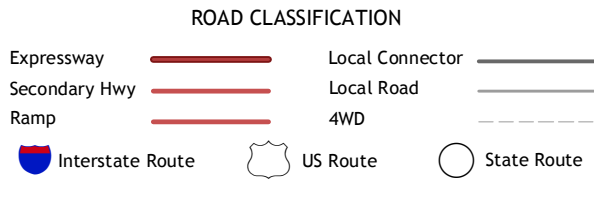


CONTOUR INTERVAL 20 FEET  
NORTH AMERICAN VERTICAL DATUM OF 1988  
This map was produced to conform with the  
National Geospatial Program US Topo Product Standard, 2011.  
A metadata file associated with this product is draft version 0.6.16



1	2	3
4	5	6
7	8	9

1 Moivayi  
2 Kaka  
3 Copperosity Hills  
4 Cimarron Peak  
5 Ventana  
6 Hickman  
7 Vaya Chin  
8 Window Mountain



WEST OF VENTANA, AZ  
2014

