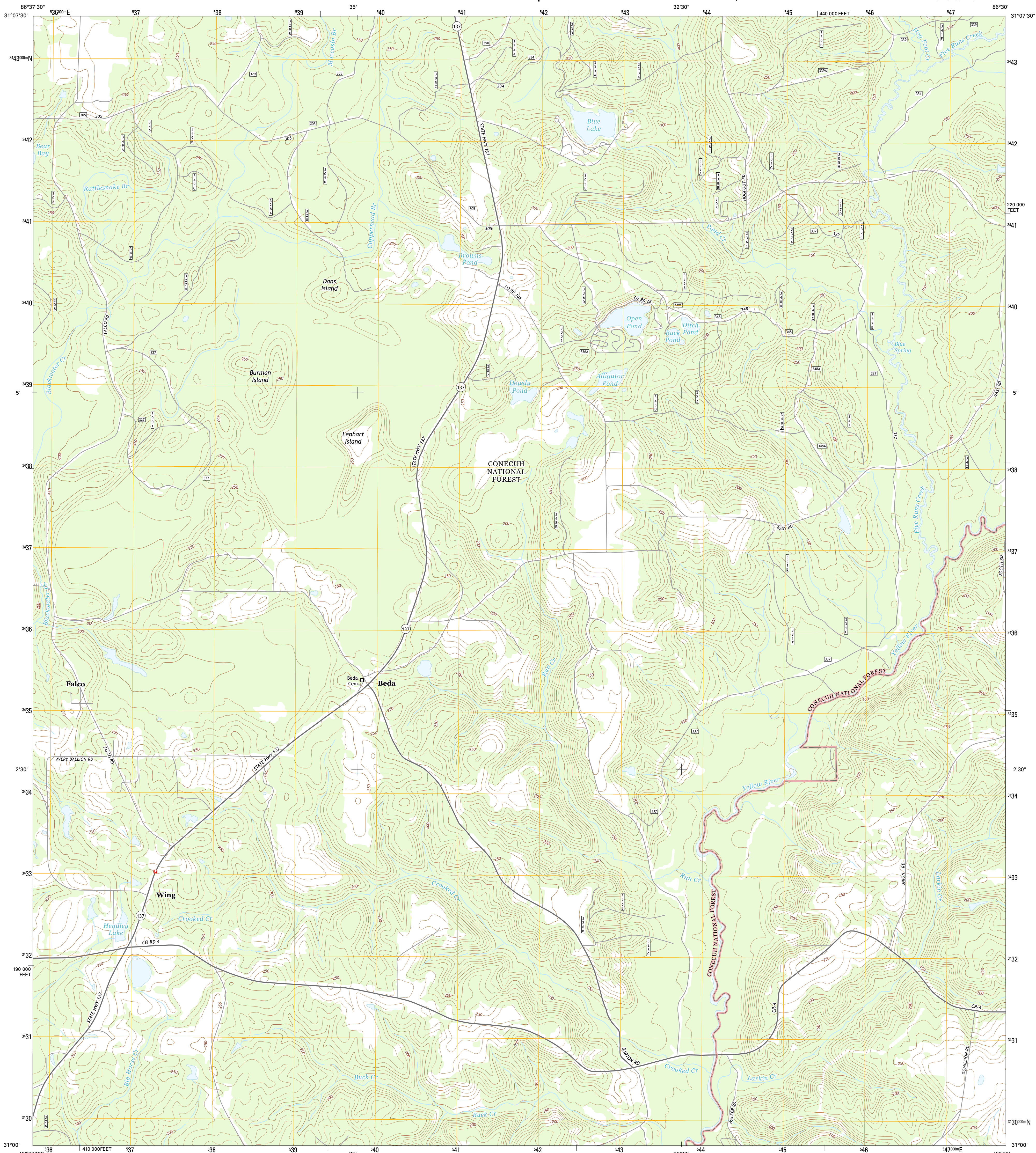




WING QUADRANGLE
ALABAMA-COVINGTON CO.
7.5-MINUTE SERIES

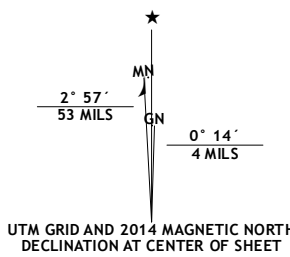


Produced by the United States Geological Survey

North American Datum of 1983 (NAD83)
World Geodetic System of 1984 (WGS84). Projection and
1 000-meter grid: Universal Transverse Mercator, Zone 16R
10 000-foot ticks: Alabama Coordinate System of 1983 (east
zone)

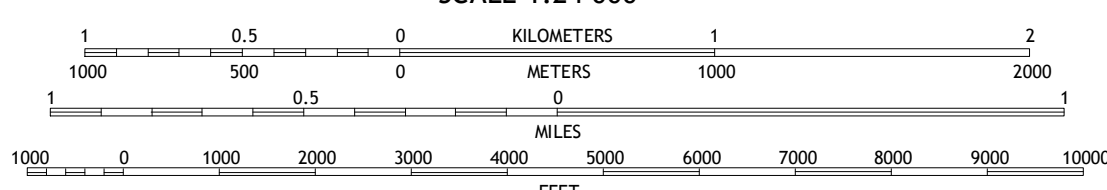
This map is not a legal document. Boundaries may be generalized for this map scale. Private lands within government reservations may not be shown. Obtain permission before entering private lands.

Imagery.....	NAIP, December	2013
Roads.....	HERE, ©2013	
Roads within US Forest Service Lands.....	FSTopo Data	
	with limited Forest Service updates,	
Names.....	GNIS,	2013
Hydrography.....	National Hydrography Dataset,	2013
Contours.....	National Elevation Dataset,	2003
Boundaries.....	Multiple sources; see metadata file 1972 -	



U.S. National Grid
100,000-m Square ID
EV
Grid Zone Designation
16R

SCALE 1:24 000



CONTOUR INTERVAL 10 FEET
NORTH AMERICAN VERTICAL DATUM OF 1988

This map was produced to conform with the
National Geospatial Program US Topo Product Standard, 2011.
A metadata file associated with this product is draft version 0.6.16



1	2	3
4		5
6	7	8

ADJOINING QUADRANGLES

- 1 Dixie
- 2 Carolina
- 3 Libertyville
- 4 Bradley
- 5 Watkins Bridge
- 6 Blackman
- 7 Oak Grove
- 8 Laurel Hill

ROAD CLASSIFICATION

<p>Expressway </p> <p>Secondary Hwy </p> <p>Ramp </p>	<p>Local Connector </p> <p>Local Road </p> <p>4WD </p>
<p> Interstate Route</p> <p> FS Primary Route</p>	<p> US Route</p> <p> FS Passenger Route</p>
<p> State Route</p> <p> FS High Clearance Route</p>	

Check with local Forest Service unit
for current travel conditions and restrictions.

WING, AL
2014

