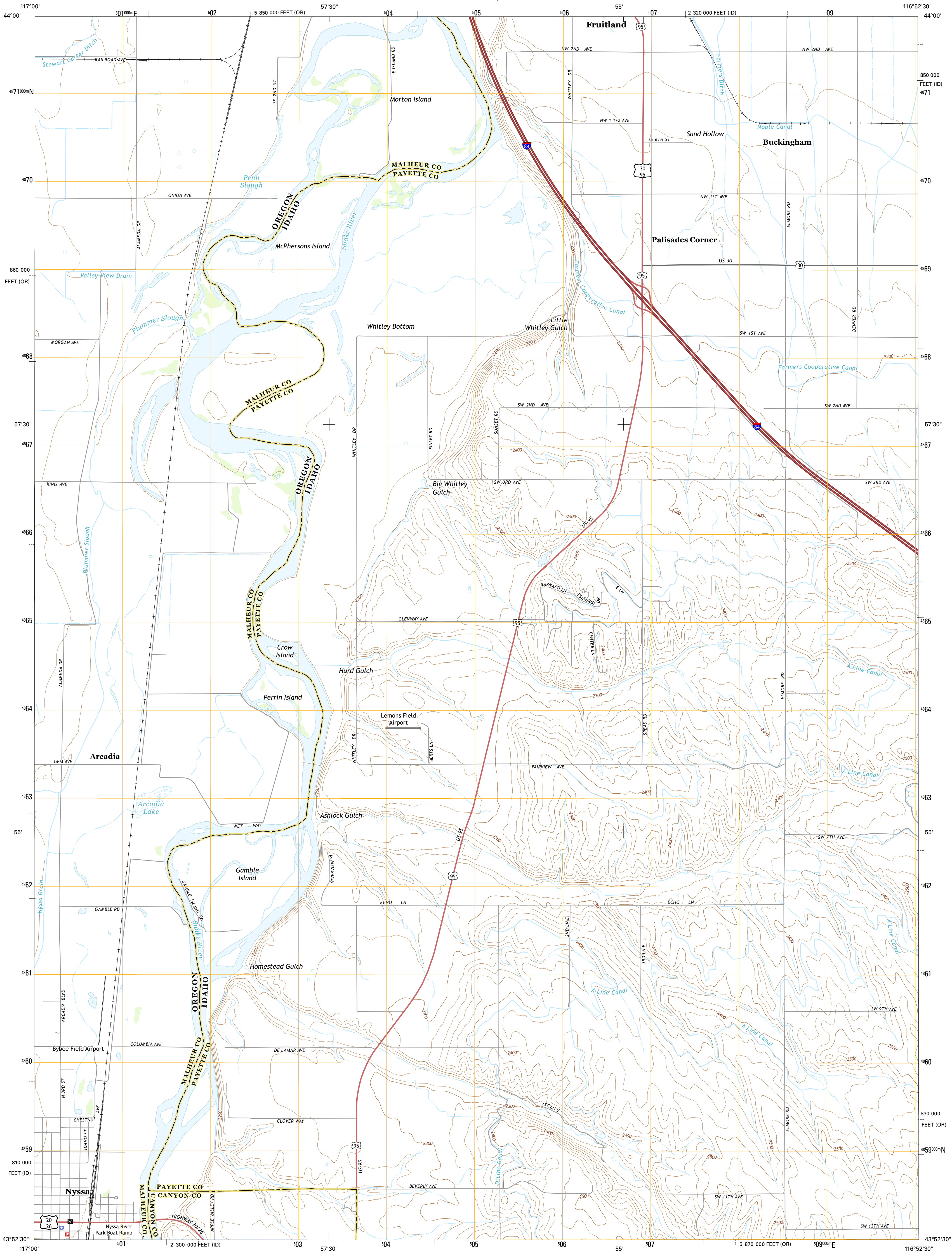




U.S. DEPARTMENT OF THE INTERIOR  
U.S. GEOLOGICAL SURVEY



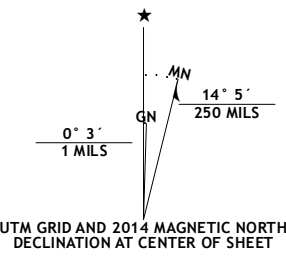
NYSSA QUADRANGLE  
OREGON-IDAHO  
7.5-MINUTE SERIES



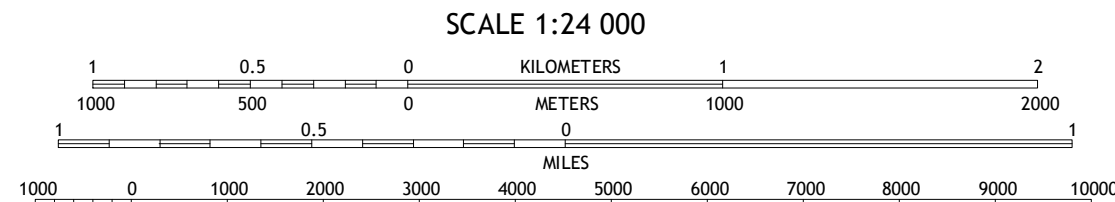
Produced by the United States Geological Survey  
North American Datum of 1983 (NAD83)  
World Geodetic System of 1984 (WGS84). Projection and  
1000-meter grid: Universal Transverse Mercator, Zone 11T  
10 000-foot ticks: Idaho Coordinate System of 1983 (west zone),  
Oregon Coordinate System of 1983 (south zone)

This map is not a legal document. Boundaries may be  
generalized for this map scale. Private lands within government  
reservations may not be shown. Obtain permission before  
entering private lands.

Imagery:.....NAIP, June 2011 - August 2011  
Roads:.....HERE, ©2013  
Names:.....GNIS, 2013  
Hydrography:.....National Hydrography Dataset, 2011  
Contours:.....National Elevation Dataset, 2000  
Boundaries:.....Multiple sources; see metadata file 1972 - 2013  
Public Land Survey System:.....BLM, 2011



|                       |
|-----------------------|
| U.S. National Grid    |
| 100,000-m Square ID   |
| NJ                    |
| Grid Zone Designation |
| 11T                   |



CONTOUR INTERVAL 20 FEET  
NORTH AMERICAN VERTICAL DATUM OF 1988  
This map was produced to conform with the  
National Geospatial Program US Topo Product Standard, 2011.  
A metadata file associated with this product is draft version 0.6.16



| ROAD CLASSIFICATION |                 |          |             |
|---------------------|-----------------|----------|-------------|
| Expressway          | Local Connector | US Route | State Route |
| Secondary Hwy       | Local Road      |          |             |
| Ramp                | 4WD             |          |             |
| Interstate Route    |                 |          |             |

|   |   |   |
|---|---|---|
| 1 | 2 | 3 |
| 4 | 5 |   |
| 6 | 7 | 8 |

ADJOINING QUADRANGLES

NYSSA, OR-ID  
2014

