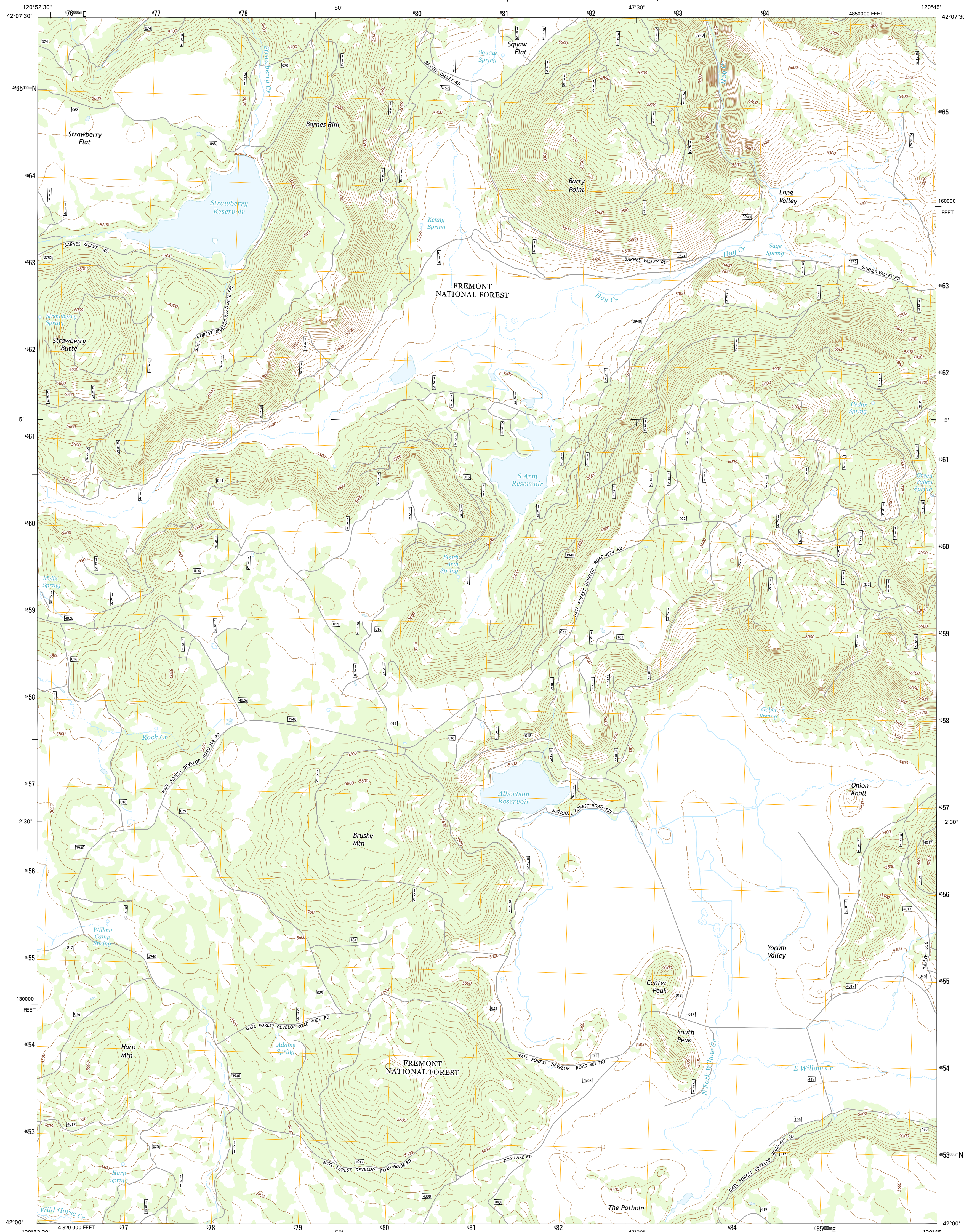




U.S. DEPARTMENT OF THE INTERIOR
U.S. GEOLOGICAL SURVEY



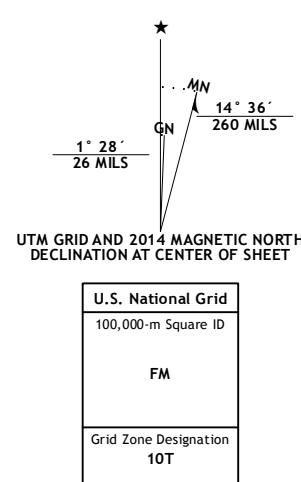
STRAWBERRY BUTTE QUADRANGLE
OREGON-LAKE CO.
7.5-MINUTE SERIES



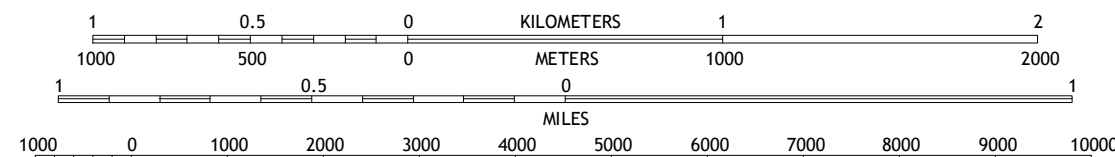
Produced by the United States Geological Survey
North American Datum of 1983 (NAD83)
World Geodetic System of 1984 (WGS84). Projection and
1 000-meter grid: Universal Transverse Mercator, Zone 10T
10 000-foot ticks: Oregon Coordinate System of 1983 (south
zone)

This map is not a legal document. Boundaries may be generalized for this map scale. Private lands within government reservations may not be shown. Obtain permission before entering private lands.

Imagery.....	NAIP, July 2012	2
Roads.....	HERE, ©2012	2
Roads within US Forest Service Lands.....	FSTopo Dataset, 2012, with limited Forest Service updates, 2012	2
Names.....	GNIS, 2012	2
Hydrography.....	National Hydrography Dataset, 2012	2
Contours.....	National Elevation Dataset, 2012	1
Boundaries.....	Multiple sources; see metadata file 1772	2
Public Land Survey System.....	BLM, 2012	2

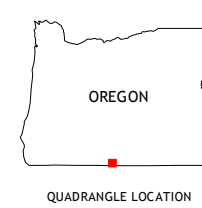


SCALE 1:24 000

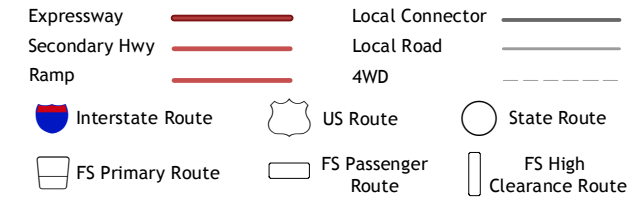


CONTOUR INTERVAL 20 FEET
NORTH AMERICAN VERTICAL DATUM OF 1988

This map was produced to conform with the
National Geospatial Program US Topo Product Standard, 2011.
A metadata file, associated with this product is draft, version 0.6.16.



ROAD CLASSIFICATION



Check with local Forest Service unit
for current travel conditions and restrictions.

1	2	3
4		5
6	7	8

ADJOINING QUADRANGLES

- 1 Barnes Valley
- 2 Arkansas Flat
- 3 Drews Reservoir
- 4 Antler Point
- 5 Dog Lake
- 6 Steele Swamp
- 7 Weed Valley
- 8 Beaver Mountain

STRAWBERRY BUTTE, OR
2014

