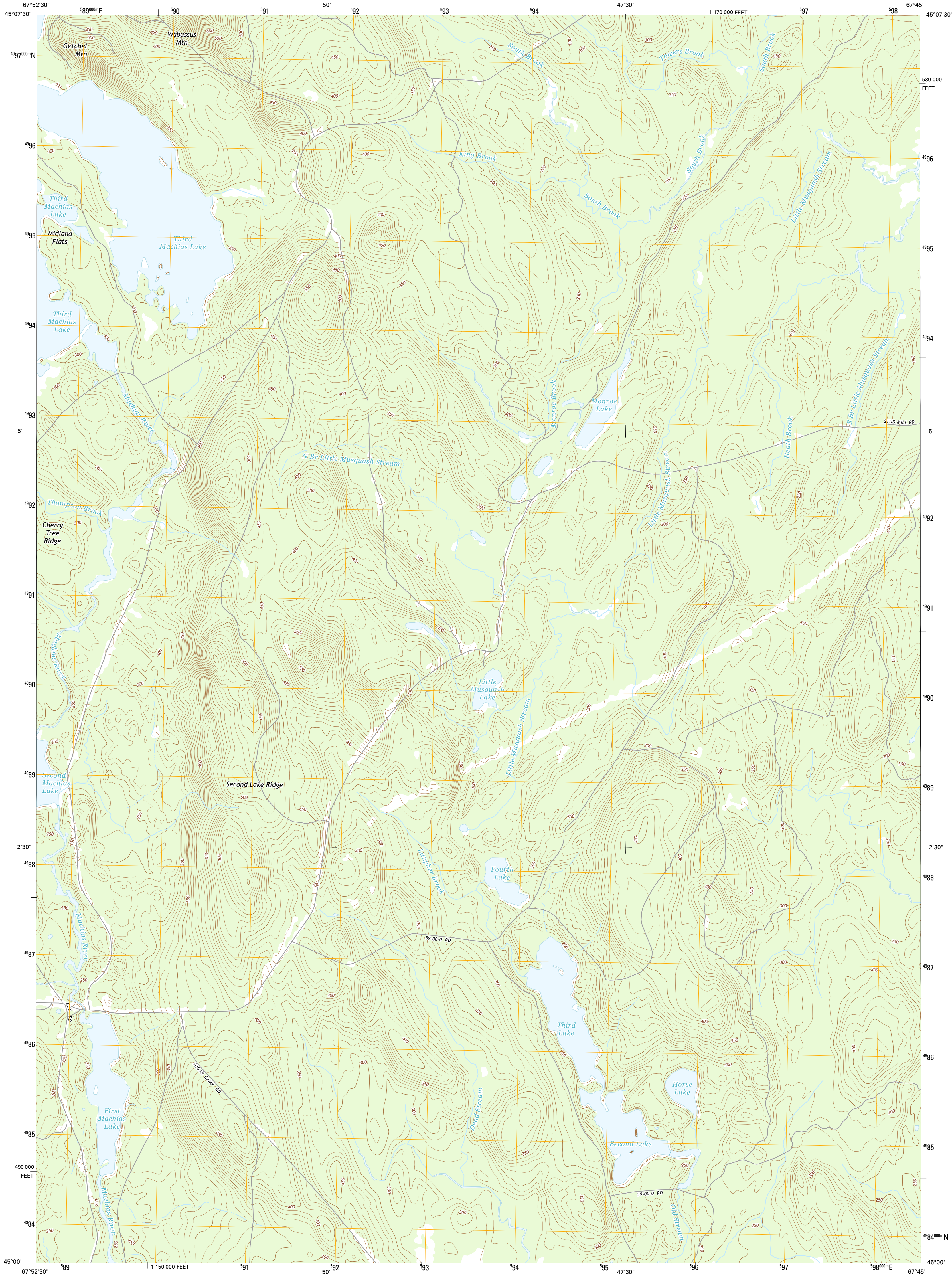




U.S. DEPARTMENT OF THE INTERIOR
U.S. GEOLOGICAL SURVEY



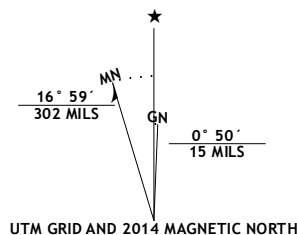
MONROE LAKE QUADRANGLE
MAINE-WASHINGTON CO.
7.5-MINUTE SERIES



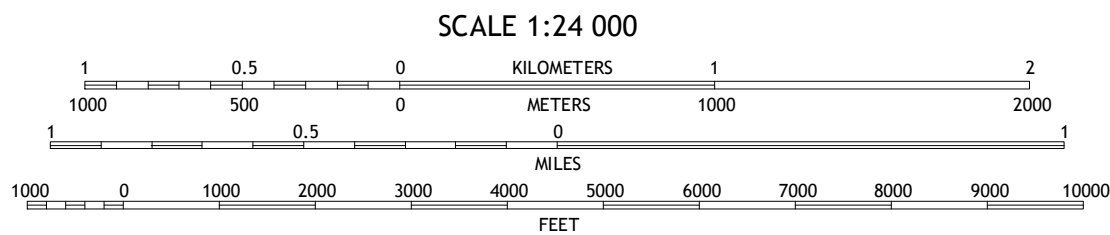
Produced by the United States Geological Survey
North American Datum of 1983 (NAD83)
World Geodetic System of 1984 (WGS84). Projection and
1 000-meter grid: Universal Transverse Mercator, Zone 19T
10 000-foot ticks: Maine Coordinate System of 1983 (east zone)

This map is not a legal document. Boundaries may be
generalized for this map scale. Private lands within government
reservations may not be shown. Obtain permission before
entering private lands.

Imagery.....NAIP, October 2013
Roads.....HERE, ©2013
Names.....GNIS, 2013
Hydrography.....National Hydrography Dataset, 2013
Contours.....National Elevation Dataset, 2008
Boundaries.....Multiple sources; see metadata file 1972 - 2013



| |
|---|
| U.S. National Grid 100,000 m Square ID |
| EK |
| Grid Zone Designation 19T |



CONTOUR INTERVAL 10 FEET
NORTH AMERICAN VERTICAL DATUM OF 1988
This map was produced to conform with the
National Geospatial Program US Topo Product Standard, 2011.
A metadata file associated with this product is draft version 0.6.16



QUADRANGLE LOCATION

| ROAD CLASSIFICATION | | |
|---------------------|-----------------|-------------|
| Expressway | Local Connector | |
| Secondary Hwy | Local Road | |
| Ramp | 4WD | |
| Interstate Route | US Route | State Route |

| | | |
|---|---|---|
| 1 | 2 | 3 |
| 4 | 5 | |
| 6 | 7 | 8 |

ADJOINING QUADRANGLES

1 Dark Cove Mountain
2 Grand Lake Stream
3 Big Lake
4 Fletcher Peak
5 Clifford Lake
6 Peaked Mountain
7 Tug Mountain
8 Wesley

MONROE LAKE, ME
2014

