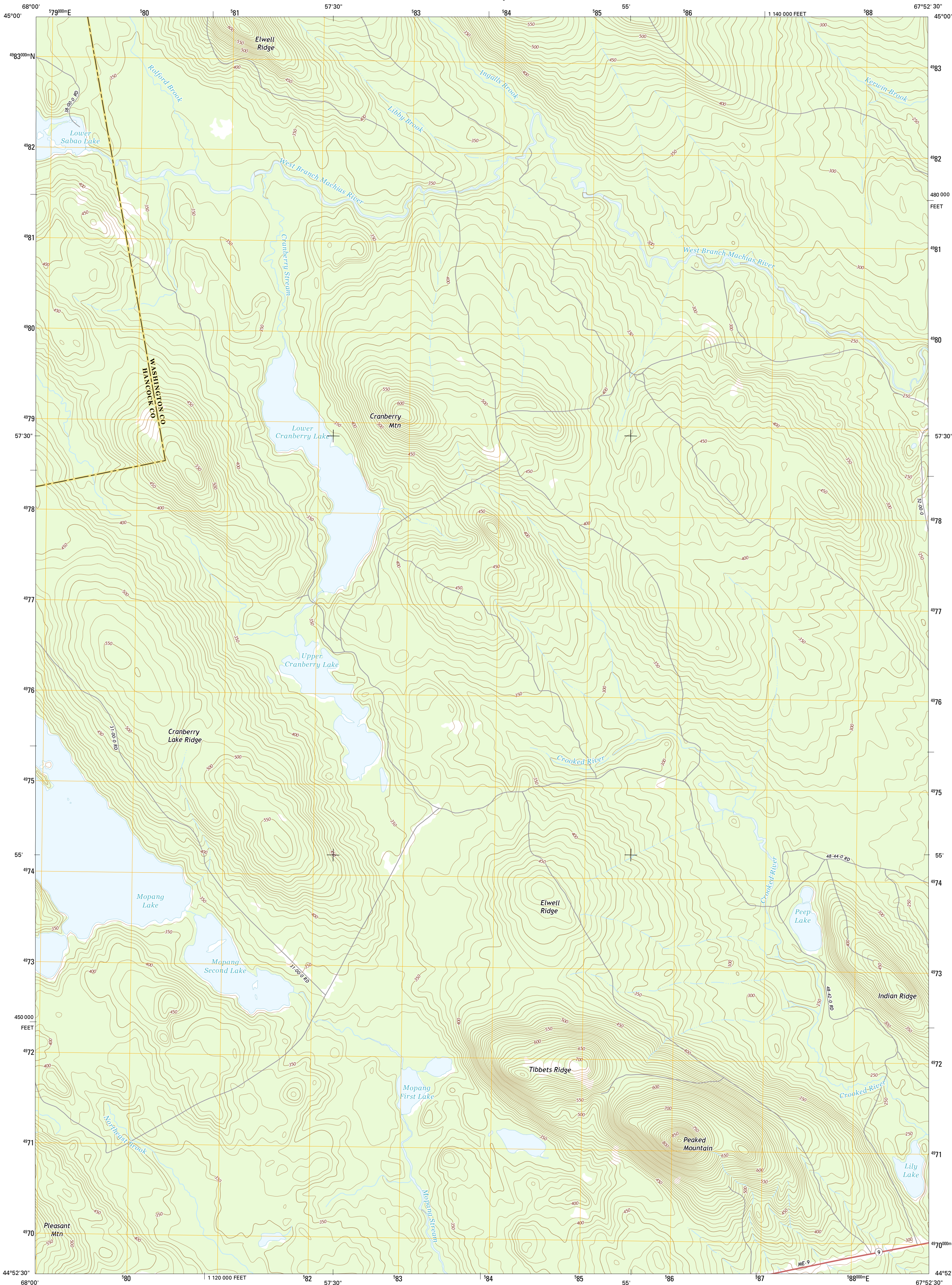




U.S. DEPARTMENT OF THE INTERIOR  
U.S. GEOLOGICAL SURVEY



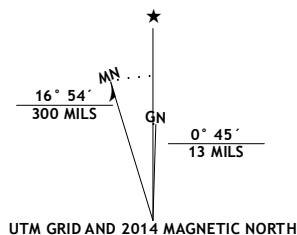
PEAKED MOUNTAIN QUADRANGLE  
MAINE  
7.5-MINUTE SERIES



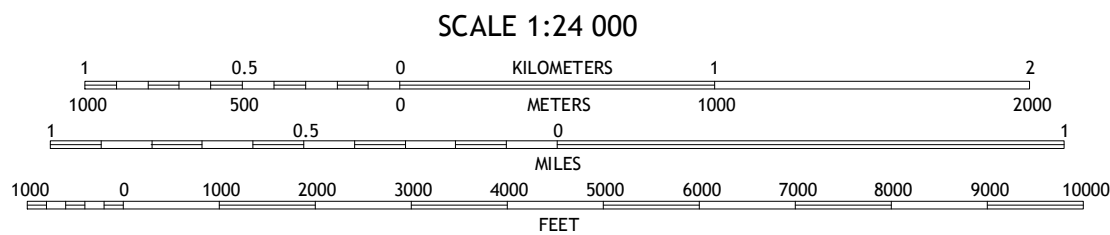
Produced by the United States Geological Survey  
North American Datum of 1983 (NAD83)  
World Geodetic System of 1984 (WGS84), Projection and  
1 000-meter grid; Universal Transverse Mercator, Zone 19T  
10 000-foot ticks: Maine Coordinate System of 1983 (east zone)

This map is not a legal document. Boundaries may be  
generalized for this map scale. Private lands within government  
reservations may not be shown. Obtain permission before  
entering private lands.

Imagery.....NAIP, October 2013  
Roads.....HERE, ©2013  
Names.....GNIS, 2013  
Hydrography.....National Hydrography Dataset, 2013  
Contours.....National Elevation Dataset, 2008  
Boundaries.....Multiple sources; see metadata file 1972 - 2013



U.S. National Grid 100,000 m Square ID
EK
Grid Zone Designation 19T



CONTOUR INTERVAL 10 FEET  
NORTH AMERICAN VERTICAL DATUM OF 1988  
This map was produced to conform with the  
National Geospatial Program US Topo Product Standard, 2011.  
A metadata file associated with this product is draft version 0.6.16



QUADRANGLE LOCATION

ROAD CLASSIFICATION			
Expressway	Local Connector	Local Road	
Secondary Hwy		4WD	
Ramp			
Interstate Route	US Route	State Route	

1	2	3
4	5	
6	7	8

ADJOINING QUADRANGLES

1 Gassabias Lake  
2 Fletcher Peak  
3 Monroe Lake  
4 Quilling Mountain  
5 Tug Mountain  
6 Lead Mountain  
7 Northeast Bluff  
8 Montegall Pond

PEAKED MOUNTAIN, ME  
2014

