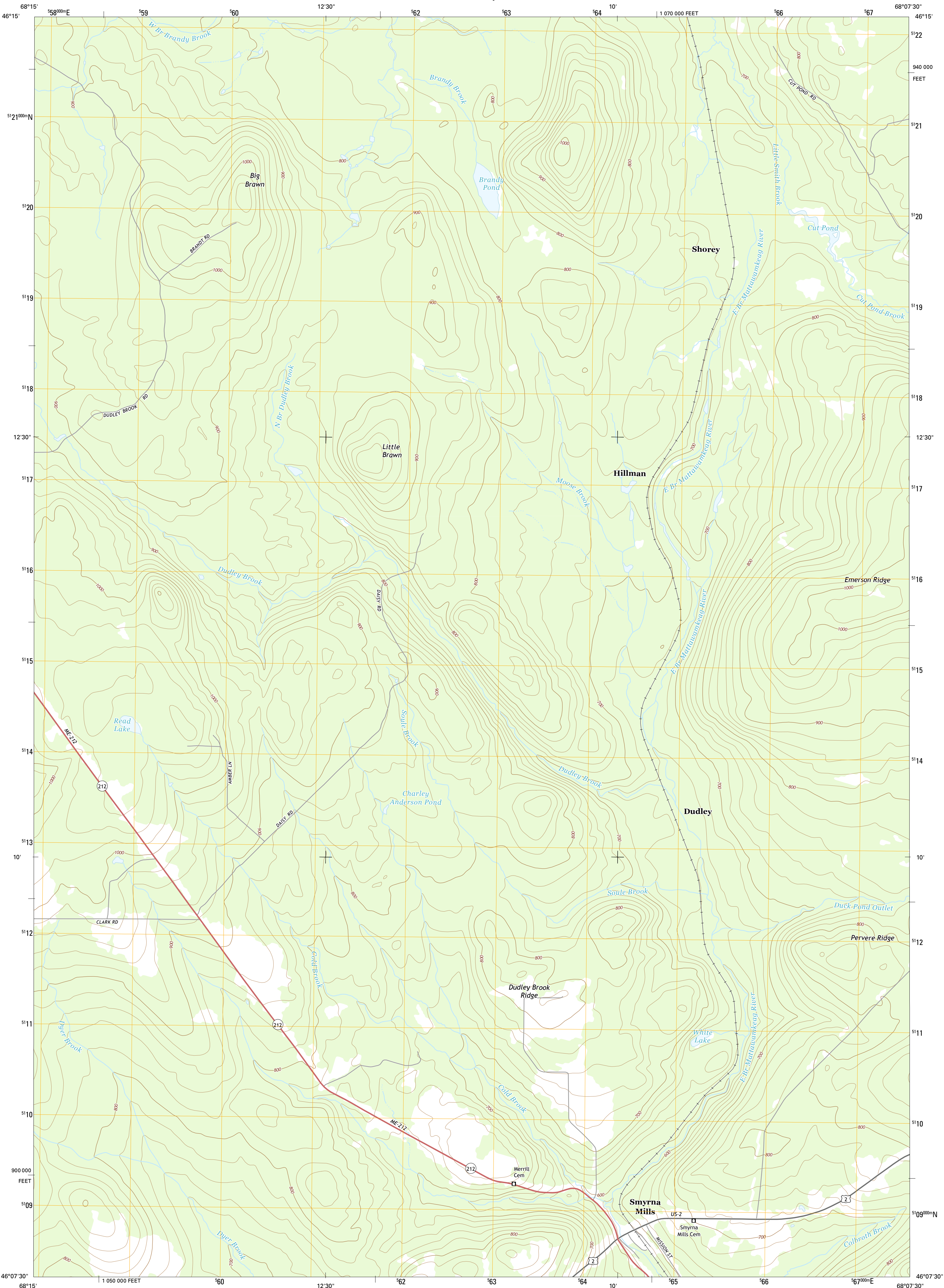




U.S. DEPARTMENT OF THE INTERIOR
U.S. GEOLOGICAL SURVEY



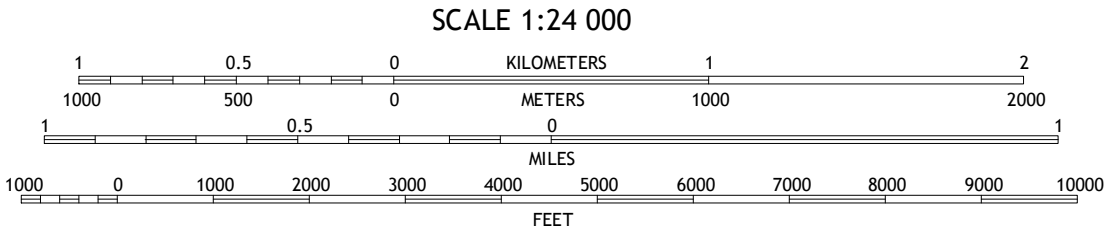
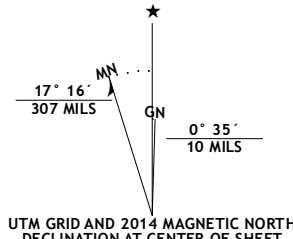
SMYRNA MILLS QUADRANGLE
MAINE-AROOSTOOK CO.
7.5-MINUTE SERIES



Produced by the United States Geological Survey
North American Datum of 1983 (NAD83)
World Geodetic System of 1984 (WGS84). Projection and
1 000-meter grid: Universal Transverse Mercator, Zone 19T
10 000-foot ticks: Maine Coordinate System of 1983 (east zone)

This map is not a legal document. Boundaries may be
generalized for this map scale. Private lands within government
reservations may not be shown. Obtain permission before
entering private lands.

Imagery.....NAIP, October 2013
Roads.....HERE, ©2013
Names.....GNIS, 2013
Hydrography.....National Hydrography Dataset, 2013
Contours.....National Elevation Dataset, 2005
Boundaries.....Multiple sources; see metadata file 1972 - 2013



ROAD CLASSIFICATION			
Expressway		Local Connector	
Secondary Hwy		Local Road	
Ramp		4WD	
Interstate Route		US Route	
		State Route	

1	2	3
4	5	6
7	8	

ADJOINING QUADRANGLES

SMYRNA MILLS, ME
2014

