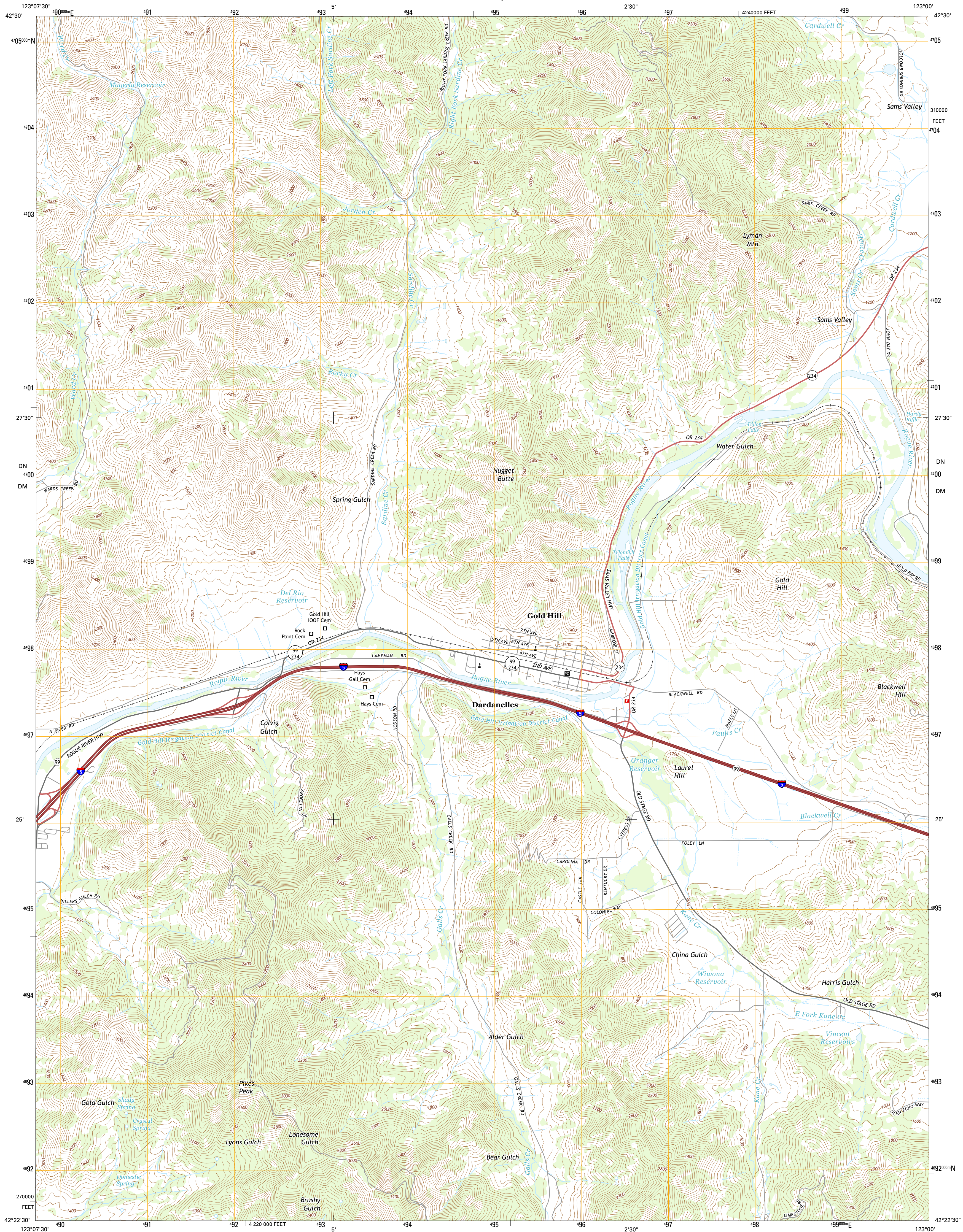




U.S. DEPARTMENT OF THE INTERIOR  
U.S. GEOLOGICAL SURVEY



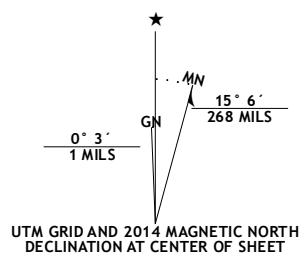
GOLD HILL QUADRANGLE  
OREGON-JACKSON CO.  
7.5-MINUTE SERIES



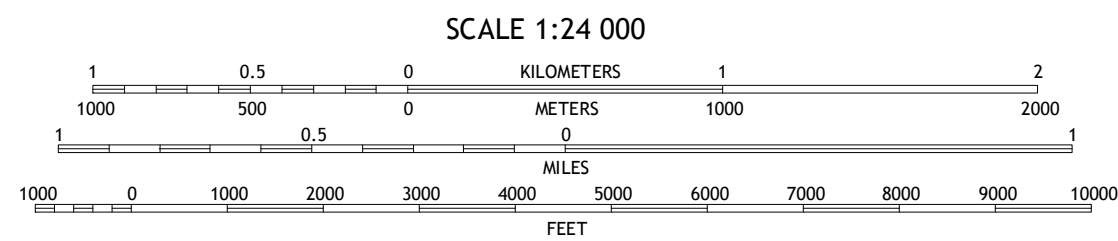
Produced by the United States Geological Survey  
North American Datum of 1983 (NAD83)  
World Geodetic System of 1984 (WGS84). Projection and  
1 000-meter grid: Universal Transverse Mercator, Zone 10T  
10 000-foot ticks: Oregon Coordinate System of 1983 (south  
zone)

This map is not a legal document. Boundaries may be  
generalized for this map scale. Private lands within government  
reservations may not be shown. Obtain permission before  
entering private lands.

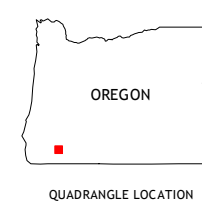
Imagery.....NAIP, June 2012  
Roads.....HERE, ©2013  
Names.....GNIS, 2013  
Hydrography.....National Hydrography Dataset, 2012  
Contours.....National Elevation Dataset, 2000  
Boundaries.....Multiple sources; see metadata file 1972 - 2013  
Public Land Survey System.....BLM, 2011



U.S. National Grid
100,000-m Square ID
DN 18-6
DM 00
Grid Zone Designation
10T



CONTOUR INTERVAL 40 FEET  
NORTH AMERICAN VERTICAL DATUM OF 1988  
This map was produced to conform with the  
National Geospatial Program US Topo Product Standard, 2011.  
A metadata file associated with this product is draft version 0.6.16



ROAD CLASSIFICATION	
Expressway	Local Connector
Secondary Hwy	Local Road
Ramp	4WD
Interstate Route	US Route
	State Route

1	2	3
4	5	
6	7	8

ADJOINING QUADRANGLES

1 Wimer  
2 McConville Peak  
3 Boswell Mountain  
4 Rogue River  
5 Sams Valley  
6 Applegate  
7 Mount Isabelle  
8 Medford West

GOLD HILL, OR  
2014

