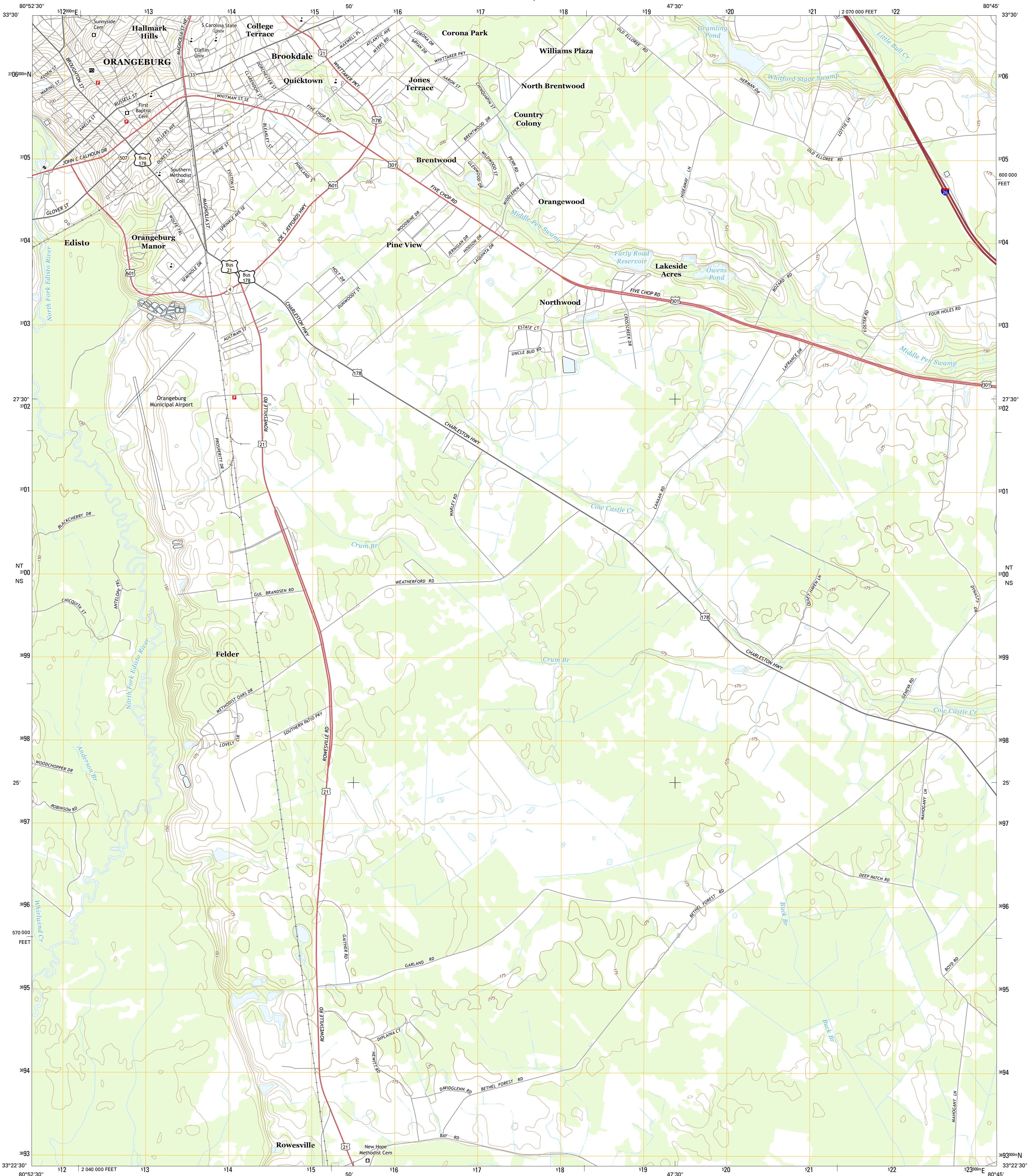




U.S. DEPARTMENT OF THE INTERIOR  
U.S. GEOLOGICAL SURVEY



ORANGEBURG SOUTH QUADRANGLE  
SOUTH CAROLINA-ORANGEBURG CO.  
7.5-MINUTE SERIES



Produced by the United States Geological Survey  
North American Datum of 1983 (NAD83)  
World Geodetic System of 1984 (WGS84) Projection and  
1000-meter grid: Universal Transverse Mercator, Zone 17S  
10 000-foot ticks: South Carolina Coordinate System of 1983  
This map is not a legal document. Boundaries may be  
generalized for this map scale. Private lands within government  
reservations may not be shown. Obtain permission before  
entering private lands.

Imagery.....NAIP, April 2011  
Roads.....HERE, ©2013  
Names.....GNIS, 2013  
Hydrography.....National Hydrography Dataset, 2011  
Contours.....National Elevation Dataset, 2009  
Boundaries.....Multiple sources; see metadata file 1972 - 2013

UTM GRID AND 2014 MAGNETIC NORTH  
DECLINATION AT CENTER OF SHEET

U.S. National Grid  
100,000-m Square ID  
NT  
NS  
Grid Zone Designation  
17S

SCALE 1:24 000  
1 0.5 0 0.5 1 2  
1000 500 0 500 1000 2000  
KILOMETERS  
1 0.5 0 0.5 1  
1000 0 1000 2000 3000 4000 5000 6000 7000 8000 9000 10000  
METERS  
1 0.5 0 0.5 1  
1000 0 1000 2000 3000 4000 5000 6000 7000 8000 9000 10000  
MILES  
FEET

CONTOUR INTERVAL 5 FEET  
NORTH AMERICAN VERTICAL DATUM OF 1988  
This map was produced to conform with the  
National Geospatial Program US Topo Product Standard, 2011.  
A metadata file associated with this product is draft version 0.6.16



ADJOINING QUADRANGLES

1	2	3
4	5	6
7	8	9

1 Wolfson  
2 Orangeburg North  
3 Cameron  
4 Cordova  
5 Indian Camp Branch  
6 Midway  
7 Branchville North  
8 Bowman

ROAD CLASSIFICATION

Expressway	Local Connector
Secondary Hwy	Local Road
Ramp	4WD
Interstate Route	US Route
	State Route

ORANGEBURG SOUTH, SC  
2014

