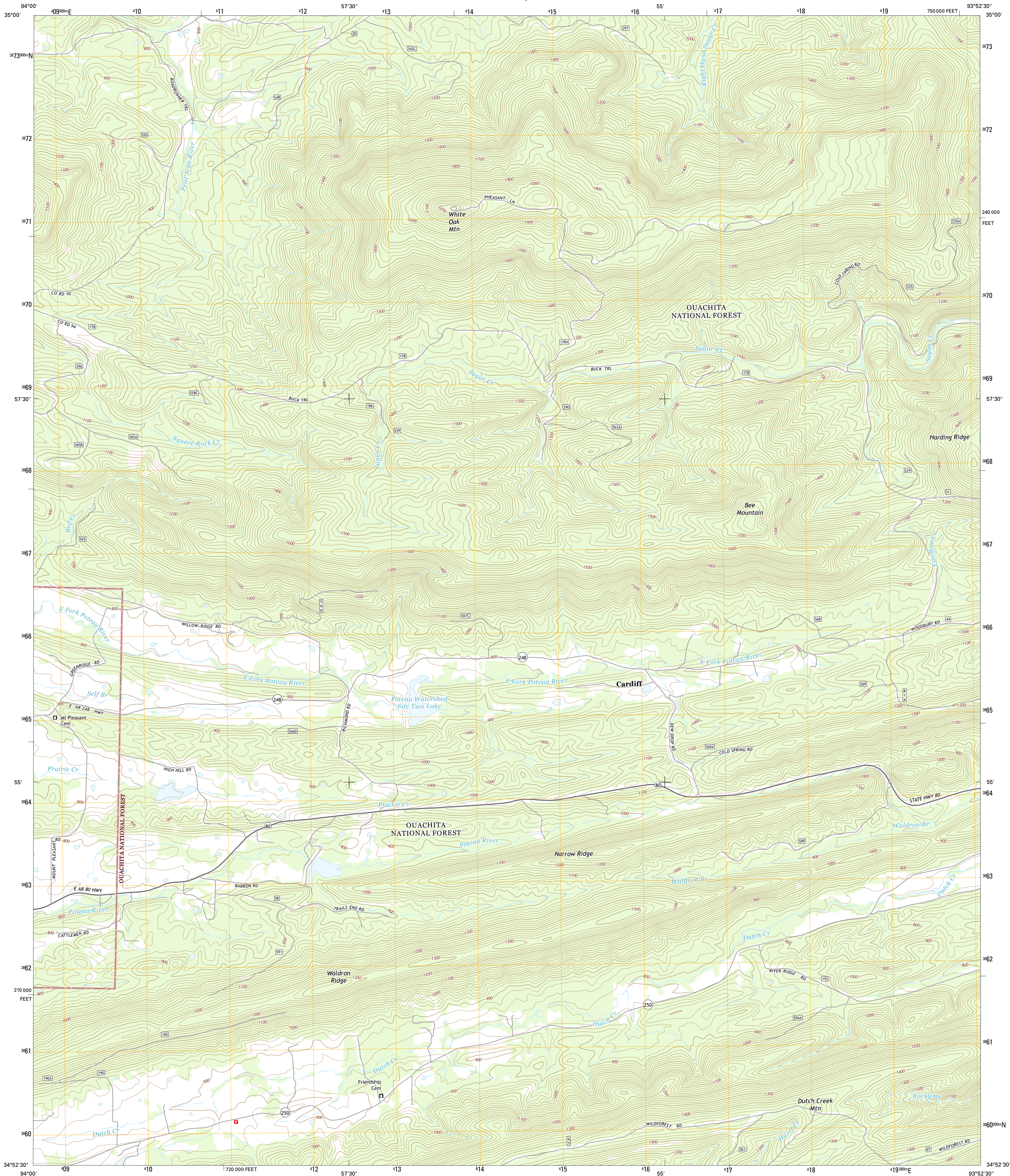




U.S. DEPARTMENT OF THE INTERIOR
U.S. GEOLOGICAL SURVEY



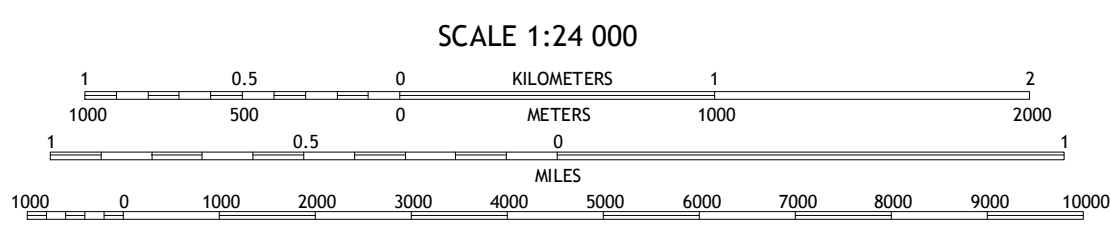
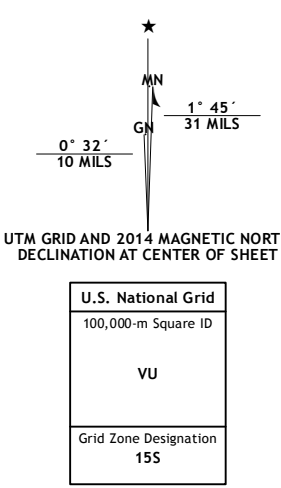
BEE MOUNTAIN QUADRANGLE
ARKANSAS-SCOTT CO.
7.5-MINUTE SERIES



Produced by the United States Geological Survey
North American Datum of 1983 (NAD83)
World Geodetic System of 1984 (WGS84) Projection and
1000-meter grid: Universal Transverse Mercator, Zone 15S
10 000-foot ticks: Arkansas Coordinate System of 1983 (north zone)

This map is not a legal document. Boundaries may be generalized for this map scale. Private lands within government reservations may not be shown. Obtain permission before entering private lands.

Imagery.....NAIP, June 2010
Roads.....HERE, ©2013
Roads within US Forest Service Lands.....FSTopo Data with limited Forest Service updates, 2013
Names.....GNIS, 2013
Hydrography.....National Hydrography Dataset, 2010
Contours.....National Elevation Dataset, 2003
Boundaries.....Multiple sources; see metadata file 1972 - 2013
Public Land Survey System.....BLM, 2011



CONTOUR INTERVAL 20 FEET
NORTH AMERICAN VERTICAL DATUM OF 1988

This map was produced to conform with the
National Geospatial Program US Topo Product Standard, 2011.
A metadata file associated with this product is draft version 0.6.16



ROAD CLASSIFICATION
Expressway
Secondary Hwy
Ramp
Interstate Route
FS Primary Route
Local Connector
Local Road
4WD
US Route
FS Passenger Route
State Route
FS High Clearance Route

Check with local Forest Service unit for current travel conditions and restrictions.

1	2	3
4	5	6
7	8	9

ADJOINING QUADRANGLES

1 Lone
2 Golden City
3 Sugar Grove
4 Waldron
5 Freedom Mountain
6 Boles
7 Parks
8 Harvey

BEE MOUNTAIN, AR
2014

