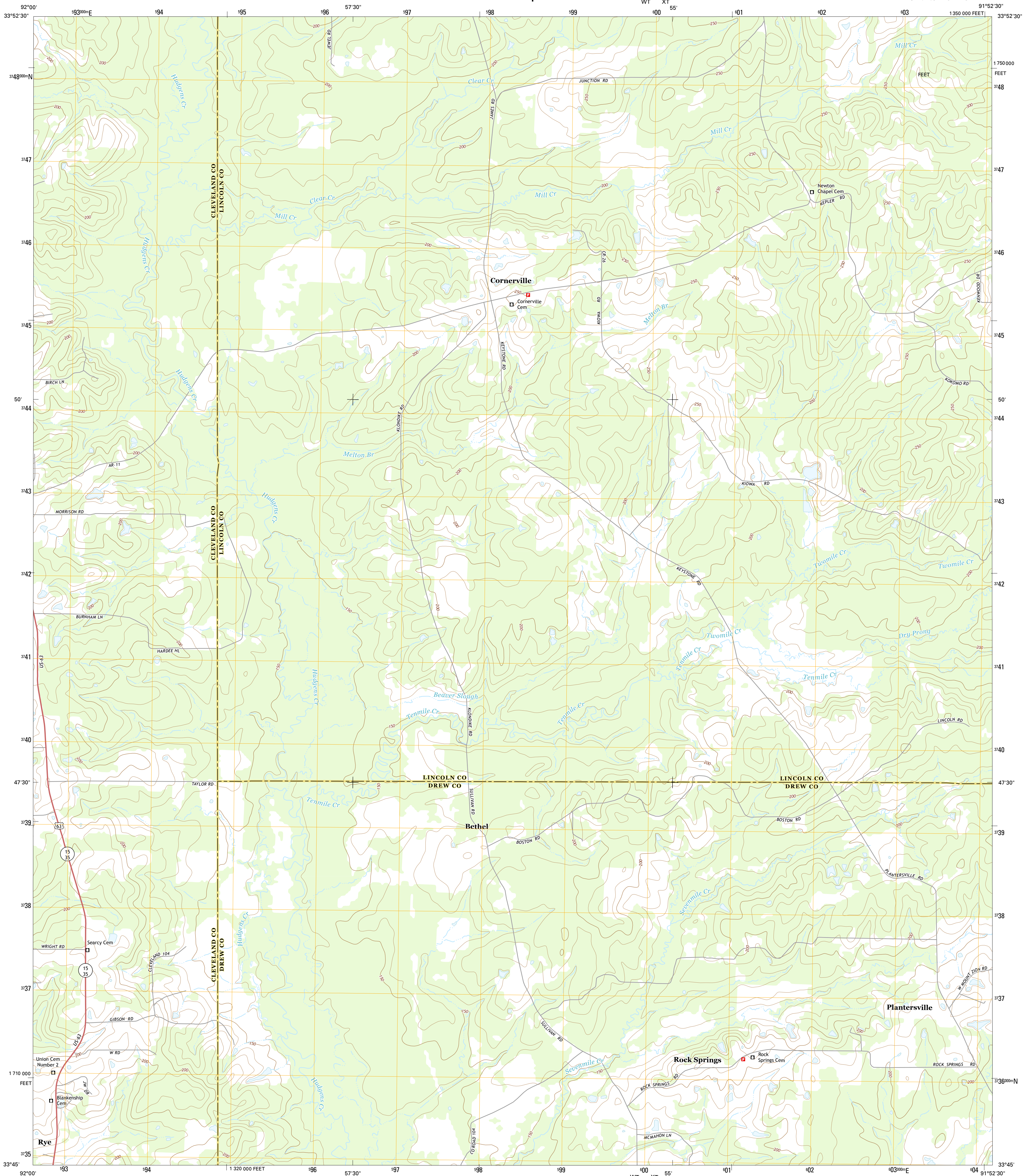




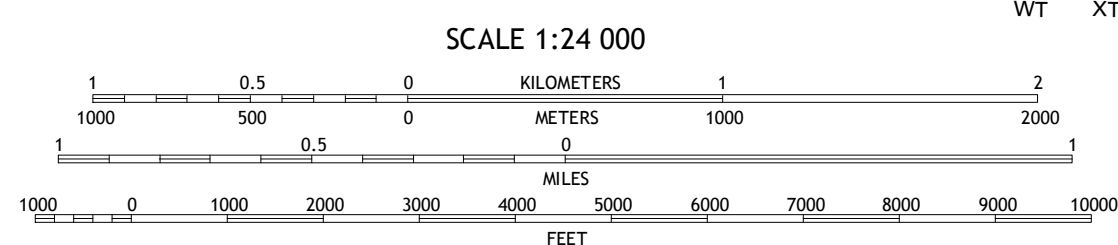
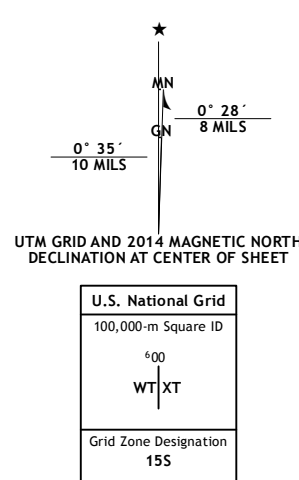
91°52'30"

FEET | 33°52'30"



This map is not a legal document. Boundaries may be generalized for this map scale. Private lands within government reservations may not be shown. Obtain permission before entering private lands.

Imagery.....	NAIP,	August	2010
Roads.....	HERE,	©2013	
Names.....	GNIS,	2013	
Hydrography.....	National Hydrography Dataset,	2010	
Contours.....	National Elevation Dataset,	1999	
Boundaries.....	Multiple sources; see metadata file	1972	2013
Public Land Survey System.....	BLM,	2011	

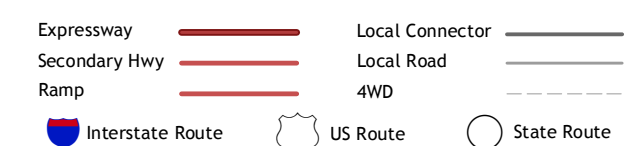


CONTOUR INTERVAL 10 FEET
NORTH AMERICAN VERTICAL DATUM OF 1988

This map was produced to conform with the
National Geospatial Program US Topo Product Standard, 2011.
A metadata file associated with this product is draft version 0.6.16



ROAD CLASSIFICATION



1	2	3
4		5
6	7	8

ADJOINING QUADRANGLES

- 1 Calmer
- 2 Glendale
- 3 Star City
- 4 Herbine
- 5 Relfs Bluff
- 6 Warren NE
- 7 Wilmar North
- 8 Monticello North

CORNERVILLE, AR
2014

