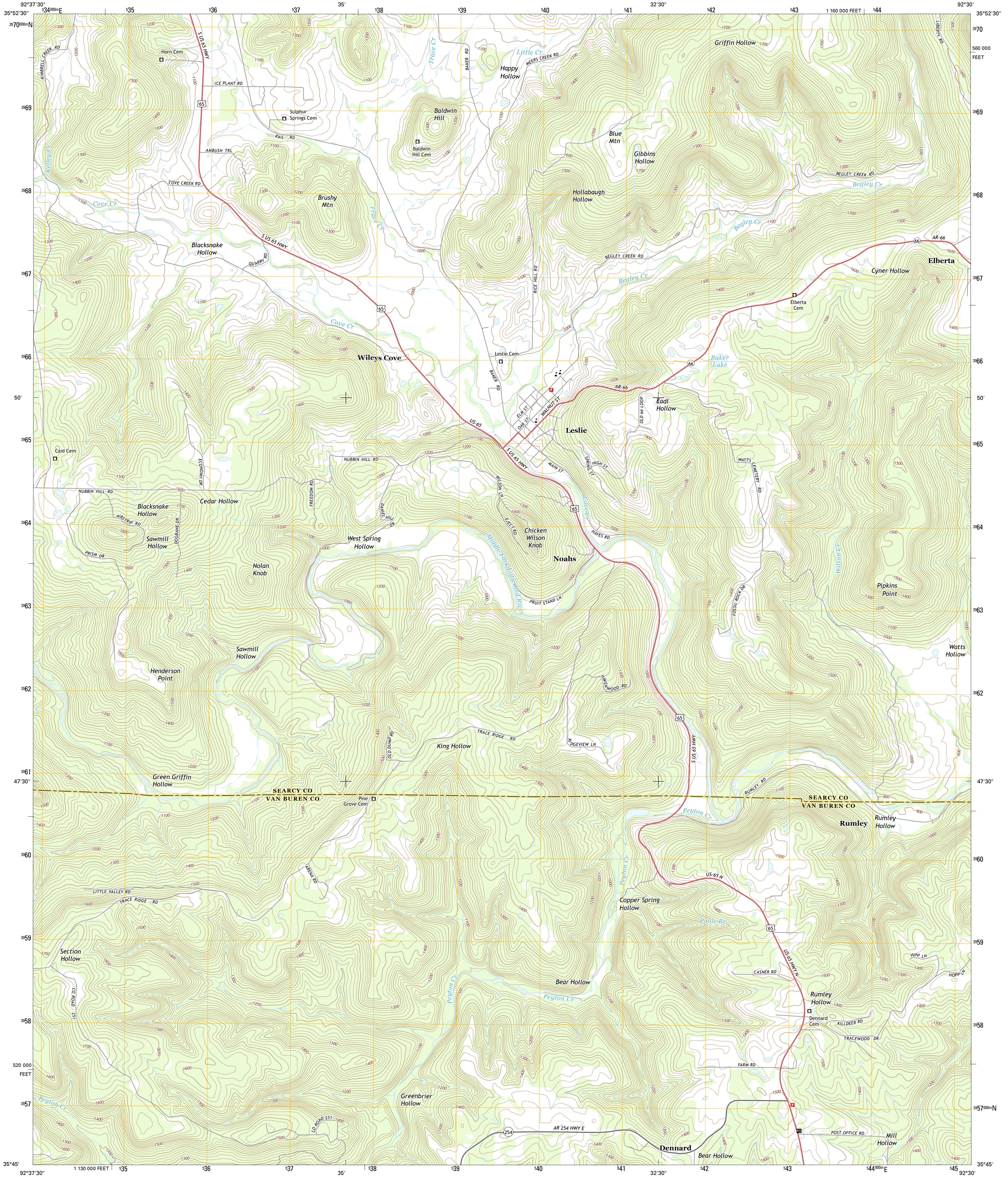




U.S. DEPARTMENT OF THE INTERIOR  
U.S. GEOLOGICAL SURVEY



LESLIE QUADRANGLE  
ARKANSAS  
7.5-MINUTE SERIES



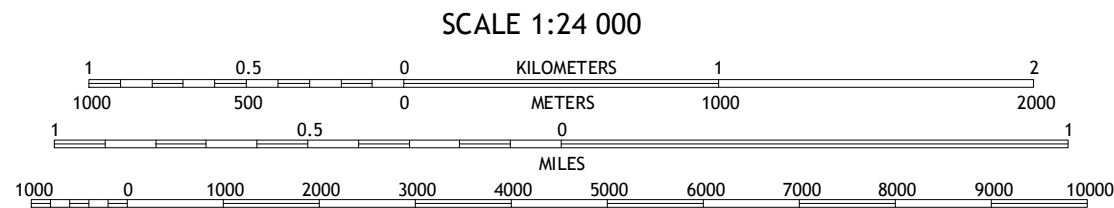
Produced by the United States Geological Survey  
North American Datum of 1983 (NAD83)  
World Geodetic System of 1984 (WGS84). Projection and  
10 000-foot ticks: Arkansas Coordinate System of 1983 (north  
zone)

This map is not a legal document. Boundaries may be  
generalized for this map scale. Private lands within government  
reservations may not be shown. Obtain permission before  
entering private lands.

Imagery.....NAIP, June 2010 - August 2010  
Roads.....HERE, ©2013  
Names.....National Hydrography Dataset, 2010  
Hydrography.....National Elevation Dataset, 2000  
Contours.....Multiple sources; see metadata file 1972 - 2013  
Boundaries.....BLM, 2011

UTM GRID AND 2014 MAGNETIC NORTH  
DECLINATION AT CENTER OF SHEET

U.S. National Grid
100,000-m Square ID
WV
Grid Zone Designation
15S



CONTOUR INTERVAL 20 FEET  
NORTH AMERICAN VERTICAL DATUM OF 1988  
This map was produced to conform with the  
National Geospatial Program US Topo Product Standard, 2011.  
A metadata file associated with this product is draft version 0.6.16



ROAD CLASSIFICATION	
Expressway	Local Connector
Secondary Hwy	Local Road
Ramp	4WD
Interstate Route	US Route
	State Route

1	2	3
4	5	6
7	8	9

1 Marshall  
2 Harriet  
3 Landis  
4 Canaan  
5 Oxley  
6 Alread  
7 Bettinburg  
8 Old Lexington

LESLIE, AR  
2014

