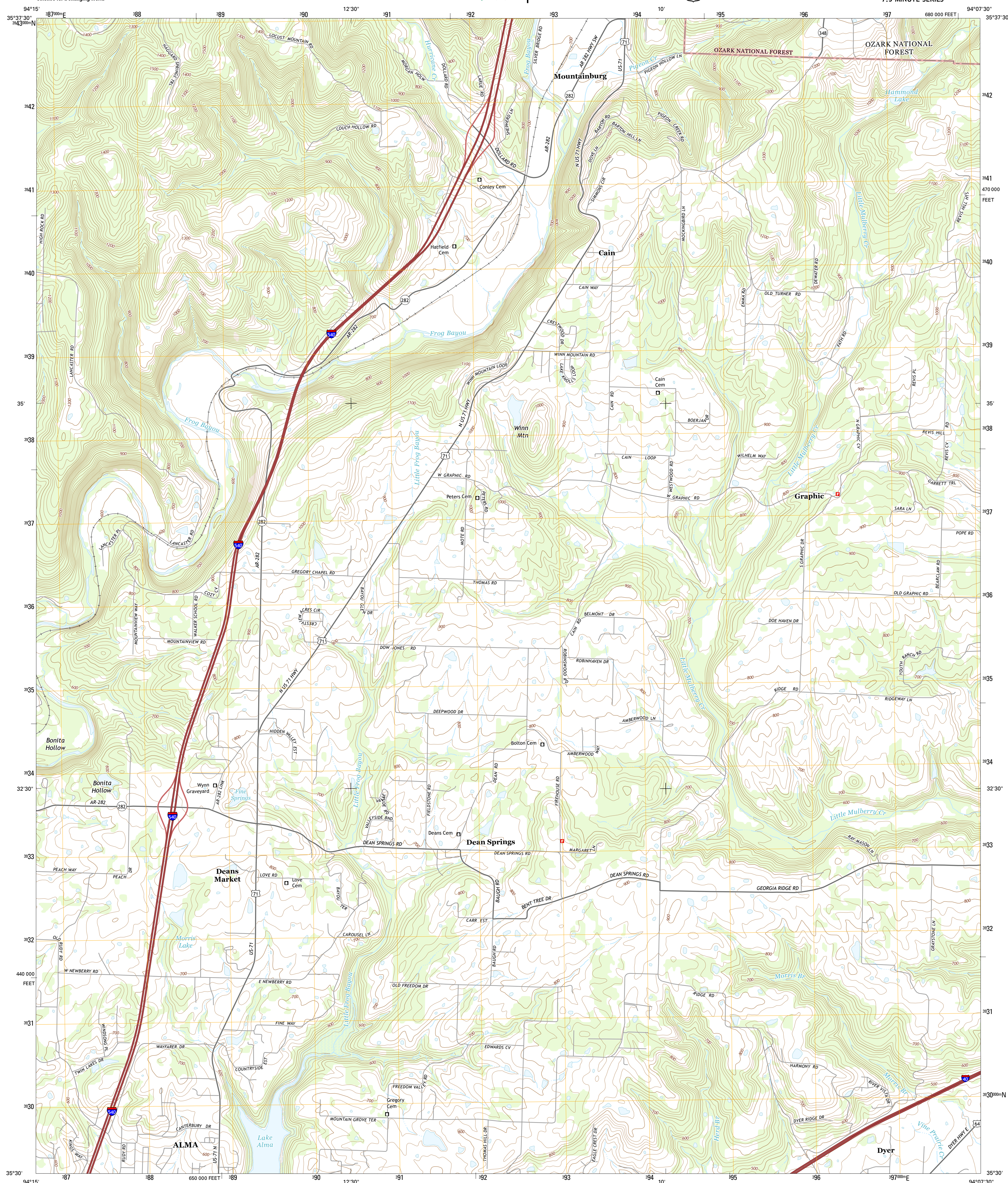




**MOUNTAINBURG SW QUADRANGLE**  
**ARKANSAS-CRAWFORD CO.**  
**7.5-MINUTE SERIES**

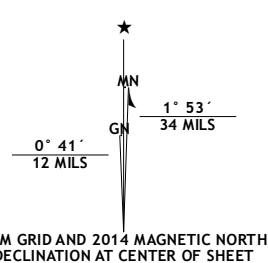


Produced by the United States Geological Survey

North American Datum of 1983 (NAD83)  
World Geodetic System of 1984 (WGS84). Projection and  
1 000-meter grid: Universal Transverse Mercator, Zone 15S  
10 000-foot ticks: Arkansas Coordinate System of 1983 (north  
zone)

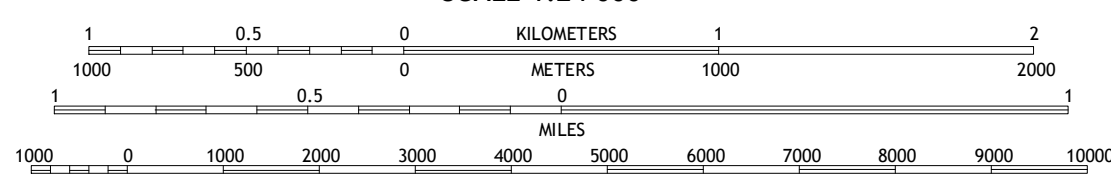
This map is not a legal document. Boundaries may be generalized for this map scale. Private lands within government reservations may not be shown. Obtain permission before entering private lands.

Imagery.....	NAIP, June	2010
Roads.....	HERE,	©2013
Roads within US Forest Service Lands.....	FTSTopo	Data
	with limited Forest Service updates,	2013
Names.....	GNIS,	2013
Hydrography.....	National Hydrography Dataset,	2000
Contours.....	National Elevation Dataset,	2010
Boundaries.....	Multiple sources; see metadata file 172	- 2013
Public Land Survey System.....	BLM,	2011



U.S. National Grid
100,000-m Square ID
UV
Grid Zone Designation
15S

SCALE 1:24 000

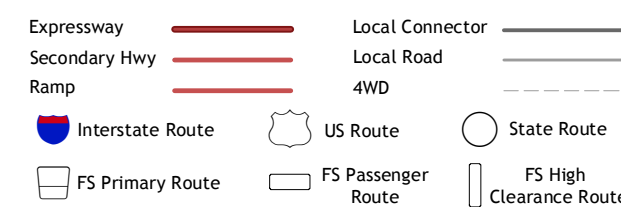


CONTOUR INTERVAL 20 FEET  
NORTH AMERICAN VERTICAL DATUM OF 1988

This map was produced to conform with the  
National Geospatial Program US Topo Product Standard, 2011.  
A metadata file associated with this product is draft version 0.6.16



ROAD CLASSIFICATION



Check with local Forest Service unit  
for current travel conditions and restrictions.

1	2	3	1 Rudy NE
4		5	2 Mountainburg
6	7	8	3 Fern

AD JOINING QUADRANGLES

- 4 Rudy
- 5 Mountainburg SE
- 6 Van Buren
- 7 Alma
- 8 Mulberry

ADJOINING QUADRANGLE

MOUNTAINBURG SW, AR  
2014