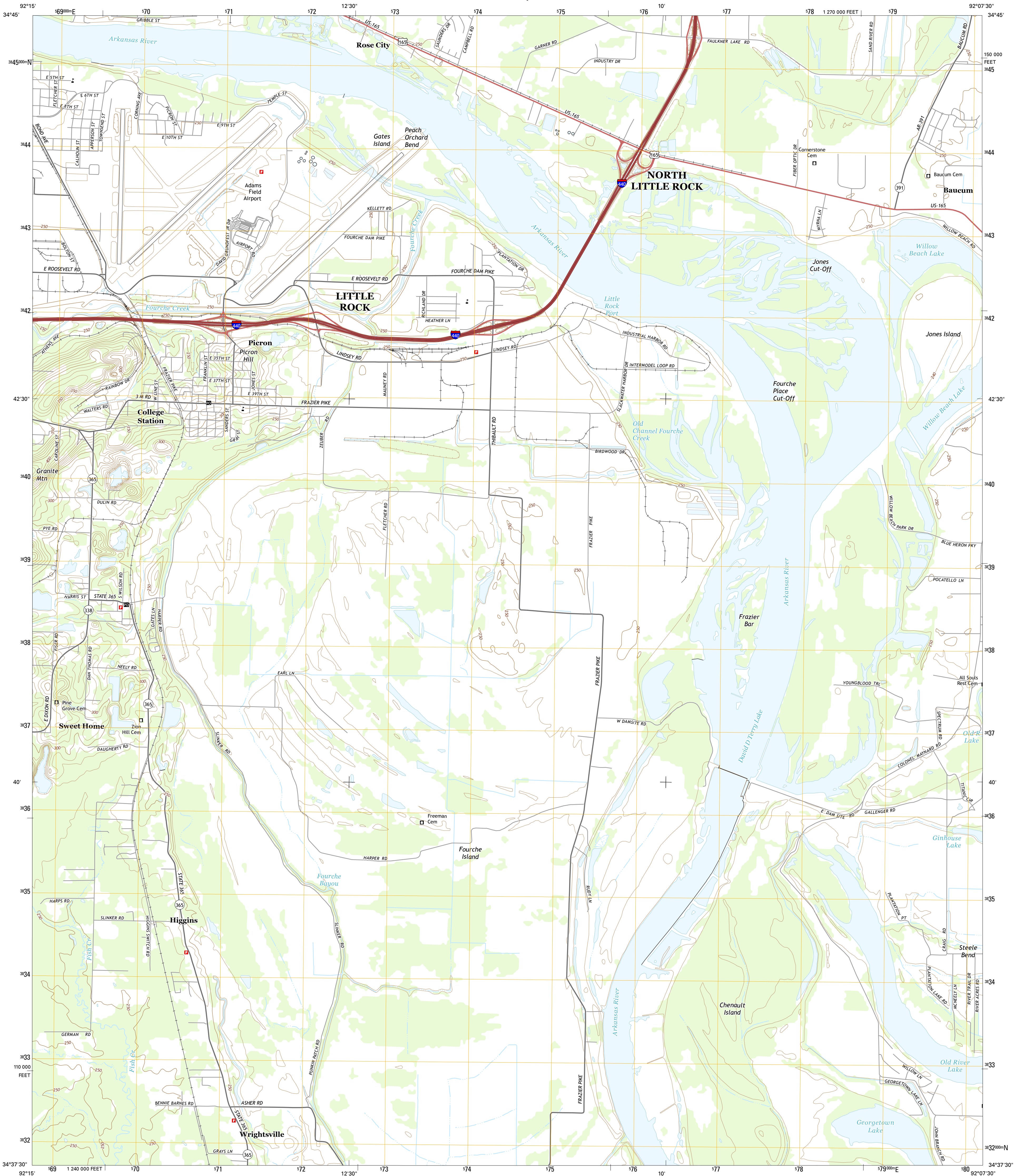




U.S. DEPARTMENT OF THE INTERIOR
U.S. GEOLOGICAL SURVEY



SWEET HOME QUADRANGLE
ARKANSAS-PULASKI CO.
7.5-MINUTE SERIES



Produced by the United States Geological Survey
North American Datum of 1983 (NAD83)
World Geodetic System of 1984 (WGS84). Projection and
1 000-meter grid: Universal Transverse Mercator, Zone 15S
10 000-foot ticks: Arkansas Coordinate System of 1983 (north
zone)

This map is not a legal document. Boundaries may be
generalized for this map scale. Private lands within government
reservations may not be shown. Obtain permission before
entering private lands.

Imagery.....NAIP, June, 2010
Roads.....HERE, ©2013
Names.....GNIS, 2013
Hydrography.....National Hydrography Dataset, 2010
Contours.....National Elevation Dataset, 2003
Boundaries.....Multiple sources; see metadata file 1972-2013
Public Land Survey System.....BLM, 2011

UTM GRID AND 2014 MAGNETIC NORTH
DECLINATION AT CENTER OF SHEET

U.S. National Grid 100,000-m Square ID
WU
Grid Zone Designation 19S

SCALE 1:24 000

1 000 0 500 0 500 1 000 2 000
KILOMETERS
1 000 0 500 0 500 1 000 2 000
METERS
1 000 0 1000 2000 3000 4000 5000 6000 7000 8000 9000 10000
FEET

CONTOUR INTERVAL 10 FEET
NORTH AMERICAN VERTICAL DATUM OF 1988

This map was produced to conform with the
National Geospatial Program US Topo Product Standard, 2011.
A metadata file associated with this product is draft version 0.6.16



ROAD CLASSIFICATION

Expressway
Secondary Hwy
Ramp
Local Connector
Local Road
4WD
US Route
State Route

ADJOINING QUADRANGLES

1	2	3
4	5	6
7	8	9

1 North Little Rock
2 McAlmont
3 Jacksonville
4 Little Rock
5 Scott
6 Spring Lake
7 Woodson
8 Keo

SWEET HOME, AR
2014

